



A000640391

OFFICE OF THE COUNTY RECORDER
CASS COUNTY, MINNESOTA
CERTIFIED, FILED, AND/OR
RECORDED ON

5/10/2018 10:53:24 AM

AS DOC #: A000640391

PAGES: 2

REC FEES: 0.00

KATHRYN M. NORBY
CASS COUNTY RECORDER

BY NG _____ Dep TX#: 146038

Page 1 of 2 A000640391

Twp 137 Rge 32 Index No. Z.0-17.0

CERTIFICATE OF LOCATION OF GOVERNMENT CORNER

Std Southeast corner of Section 34, Township 137 N., Range 32 W., 5th P.M.

State of Minnesota, County of Cass

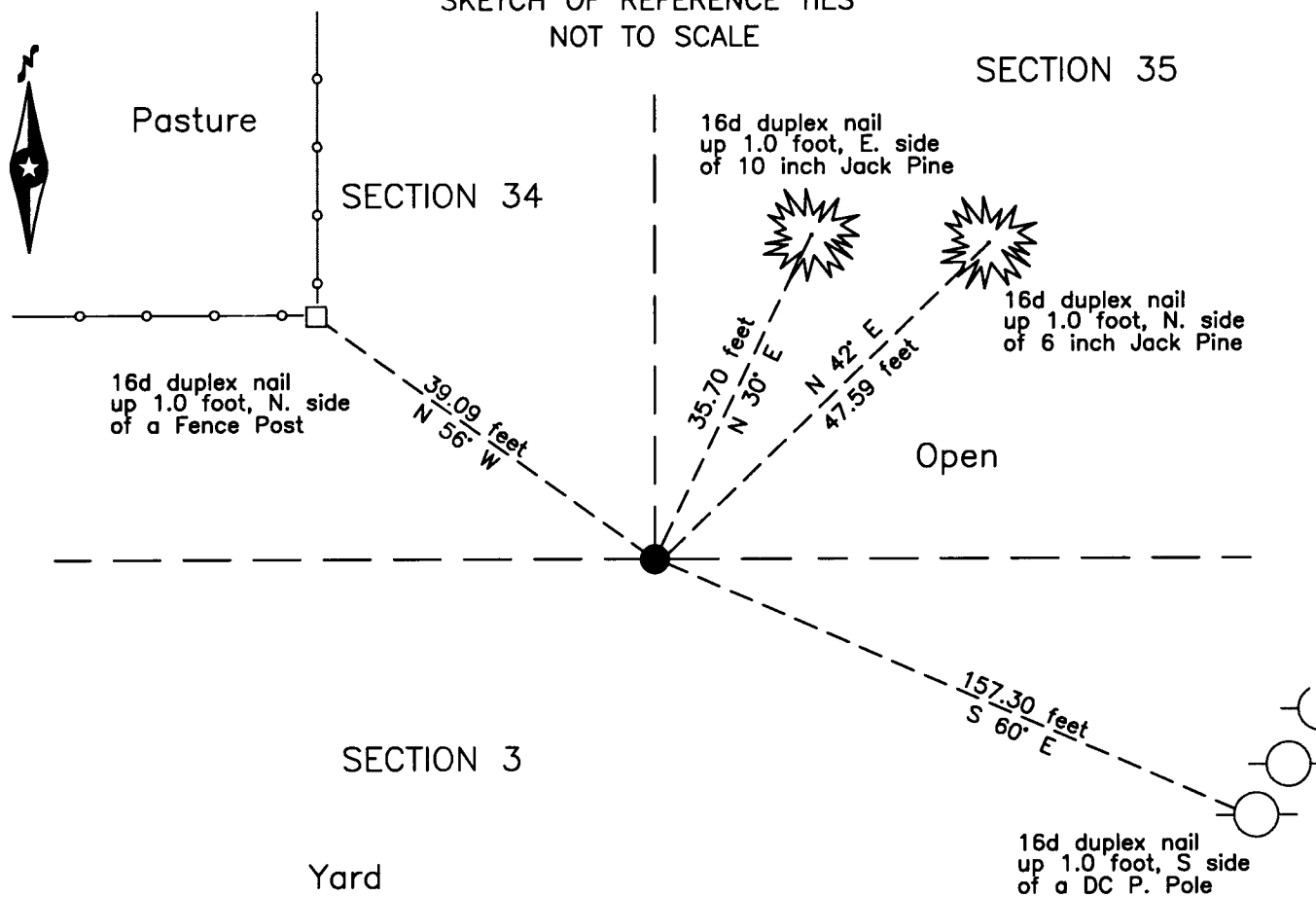
At the corner location shown on the sketch:

On 26 Sept. 2008 found a 2.5 inch outside diameter iron pipe, down 0.1 foot,
2 feet±, south of centerline of driveway.

left monument as found lowered monument removed monument (explain)

On _____ placed _____


SKETCH OF REFERENCE TIES
NOT TO SCALE



NOTE:
All bearings are true

Statement of evidence relative to this corner location is on the back of this page.

I hereby certify that this survey, plan or report was prepared by me or under my direct supervision and that I am a duly Licensed Land Surveyor under the laws of the State of Minnesota.


Terry L. Freeman, Cass County Surveyor
Date 5/9/18 MN License No. 21367

Statement of Evidence**Southeast corner Section 34, Township 137 North, Range 32 West, 5th Principal Meridian.**

- June 1866 H. Mellen, General Land Office (GLO) Deputy Surveyor, in the notes for the survey of the 9th Standard Parallel set a post for the original corner and referenced it as follows:
 7" Sp. Pine N 42° E 18 links (11.88 feet) 9" Sp. Pine N 16° W 31 links (20.46 feet)
 The above record is on file with the Minnesota Historical Society in St. Paul, Minnesota, copies are filed with the Cass County Highway Department, Surveyor's Office (CCHD/SO).
- June 1905 N.W. Hicks, Deputy Cass County Surveyor, Survey Record Number 236, Book A, page 594, on file in the CCHD/SO, marked a stone as witness to corner, being 1.40 feet north and 1 foot east of corner.
- June 1913 J.W. Curo, LS 1428, Cass County Surveyor, Survey Record Number 236, Book A, page 594, on file in the CCHD/SO, state "intersect stone with cross(+) set by Deputy Co. Surveyor N.W. Hicks for a bearing, being 1.40 feet north and 1 foot East of the true corner of secs. 34 & 35". On page 603 he states "we chain one foot (1) ft. west where we set a 2 ½ by 48 inch galvanized iron pipe, capped on top and set its full length into the ground for the true corner" added new witnesses as follows:
 6" J. Pine S 42°41' E 43.50 feet 6" J. Pine N 51°06' W 47.35 feet
- Feb. 1916 Final Road Order of Town Board "G", on file in the CCHD/SO, indicates a road on the south line of Township 137 North, Range 32 West, between the southeast corner of Sections 32 and 36 and states "And whereas, said road is wholly on a section line already surveyed we deem a survey of said road unnecessary."
- Circa 1918 J.F. Pomasel, LS 1728, Cass County Assistant Engineer, Survey Record Number 453, Book C, page 406, on file in the CCHD/SO, indicates "Wood Post" at station 1533+01.0 in S.R.H. 81.
- Aug. 1957 Minnesota Department of Transportation (MN/DOT), S.P. 1109, Trunk Highway Number 64 right-of-way map, on file on the MN/DOT web site as 15-55 Th 64, Document Number 1946812 and 15-56 Th 64, Document Number 1946813, indicates Capped Iron Pipe Inp. at the PI of the old road, 625.0 feet west of the centerline of the new alignment.
- Sept. 2008 B. Hippen, technician, records of the CCHD/SO, found a 2.5 inch outside diameter iron pipe, down 0.1 foot, 2 feet, more or less, south of centerline of driveway and witnessed as follows:
 Fence Post N 56° W 39.09 feet 10" J. Pine N 30° E 35.70 feet
 D.C. P. Pole S 60° E 157.30 feet 6" J. Pine N 42° E 47.59 feet
- April 2018 B. Hippen, technician, records of the CCHD/SO, found a 2.5 inch outside diameter iron pipe, flush, 2 feet, more or less, south of centerline of driveway, lowered monument to 0.6 foot below road surface, all 2008 witnesses are in good condition.

The recovered and established references for the position are shown on the face of this document.

Analysis of the recovered record data, field evidence and survey measurements, indicates that the monument recovered by the CCHD/SO in 2008 is the accepted location of this corner.

County Coordinates (Cass County South)

Northing 272846.38

Easting 440760.91