



A000636850

OFFICE OF THE COUNTY RECORDER  
CASS COUNTY, MINNESOTA  
CERTIFIED, FILED, AND/OR  
RECORDED ON

12/7/2017 1:56:40 PM

AS DOC #: A000636850

PAGES: 2

REC FEES: 0.00

KATHRYN M. NORBY  
CASS COUNTY RECORDER

BY SR \_\_\_\_\_ Dep TX#: 143133

Page 1 of 2 A000636850

Twp 137 Rge 29 Index No. V.0-09.0

### CERTIFICATE OF LOCATION OF GOVERNMENT CORNER

Northeast corner of Section 32, Township 137 N., Range 29 W., 5th P.M.  
State of Minnesota, County of Cass

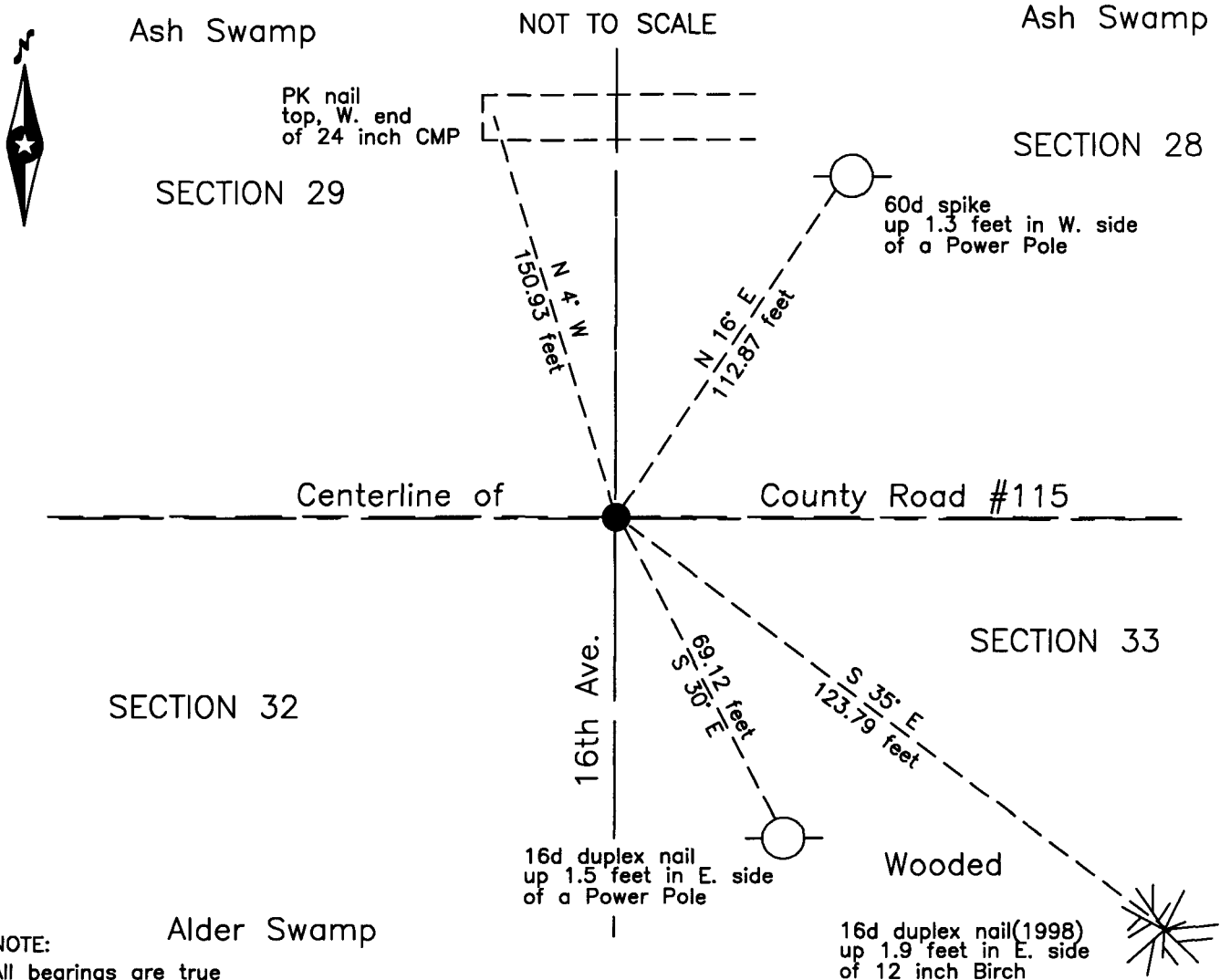
At the corner location shown on the sketch:

On 13 July 2017 found a 2 inch squarer steel tube with aluminum cap, down 3.7 feet, on centerline of County Road 115 and 16th Avenue.

left monument as found     lowered monument     removed monument (explain)

On 20 Oct 2017 placed a 2 inch squarer steel tube with aluminum cap, down 0.05 foot, on new centerline County Road #115.


SKETCH OF REFERENCE TIES  
NOT TO SCALE



NOTE: Alder Swamp  
All bearings are true

Statement of evidence relative to this corner location is on the back of this page.

I hereby certify that this survey, plan or report was prepared by me or under my direct supervision and that I am a duly Licensed Land Surveyor under the laws of the State of Minnesota.

  
Terry L. Freeman, Cass County Surveyor  
Date 12/6/17 MN License No. 21367

**Index No. V.0-09.0**Statement of Evidence**Northeast corner of Section 32, Township 137 North, Range 29 West, 5th Principal Meridian.**

- Sept. 1910 J.W. Curo, LS 1428, Survey Record #156, Book A, page 325, on file in the CCHD/SO, lists the GLO witnesses and states "We find all the stumps of the trees standing plainly marked B.T. from which we set the true corner by proportionate measurement". He sets an 8 x 8 x 36 inch cement post for the corner.
- Sept. 1913 A.W. Moulster, LS 967, Random Drive, Ditch Shelf 5, Book 2, page 17, on file in the CCHD/SO, indicates the subject corner is an 8 inch x 8 inch x 36 inch monument at 0+00.
- Sept. 1917 J.F. Pomasel, LS 1728, Lateral of SRH #80, Ditch Shelf 3, Book 9, pages 2, 4, 11, 22 and 29, on file in the CCHD/SO, indicates the subject corner at 105+42.0 is concrete monument 16.3 feet south of road.
- June 1919 C.J. White, LS 1054, Pine River to Jenkins Road, Survey Record #469, Book C, page 477 and Ditch Shelf 5, Book 19, pages 20 and 21, on file in the CCHD/SO, indicates concrete monument at the subject corner at Station 373+87.5 and R.P. as follows:
- |      |    |         |     |    |         |
|------|----|---------|-----|----|---------|
| T.P. | NE | 30 feet | Stp | NW | 32 feet |
|------|----|---------|-----|----|---------|
- Aug. 1920 G. Weatman, State Road No. 12, Ditch Shelf 1, Book 13, page 3, on file in the CCHD/SO, indicates 8" Con Mon. and Station 0+00 = 373+87.5.
- May 1922 C.J. Bark, Assistant Engineer, Certificate of Location of Government Corner, on file in the Cass County Recorders Office(CCRO) as Document No. A000583897, indicates corner is a 6 inch concrete monument witnessed by the 1919 witnesses and lists new witnesses as follows:
- |              |    |         |              |    |           |
|--------------|----|---------|--------------|----|-----------|
| 2" iron pipe | NE | 34 feet | 2" iron pipe | NW | 34 feet   |
| 2" iron pipe | SW | 42 feet | 2" iron pipe | SE | 46.7 feet |
- Oct. 1925 A.R. Taubman, Assistant Engineer, S.A.R. No. 6, Ditch Shelf 5, Book 153, page 31, on file in the CCHD/SO, indicates corner at station 105+45.5, no indication of monument.
- April 1927 A.R. Taubman, Assistant Engineer, S.A.R. No. 6, Ditch Shelf 1, Book 3, page 6, on file in the CCHD/SO, and Certificate of Location of Government Corner, on file in the CCRO as Document No. A000583896, indicates corner located from previous road survey R.P.s. A Concrete Monument 4"x 4" top, 6"x 6" base, 18" long and witnessed by triangular concrete monuments as follows:
- |            |            |             |            |            |             |
|------------|------------|-------------|------------|------------|-------------|
| Conc. Mon. | N 51°57' W | 46.669 feet | Conc. Mon. | N 38°03' E | 46.669 feet |
|------------|------------|-------------|------------|------------|-------------|
- Nov. 1941 J.W. Curo, LS 1428, Cass County Surveyor, Survey Record #583, Book D, page 266, on file in the CCHD/SO, Indicates a 2 inch by 12 inch pipe and witnesses as follows:
- |            |            |             |              |            |             |
|------------|------------|-------------|--------------|------------|-------------|
| 10" Spruce | N 47°30' E | 146.50 feet | 15" Elm      | S 25°50' E | 138.80 feet |
| 12" Elm    | S 6°25' W  | 176.50 feet | 10" Tamarack | N 44° W    | 195.80 feet |
- Oct. 1989 W.E. Curo, LS 11395, Curo Book 325, page 18, on file in the CCHD/SO, indicates the subject corner and no witnesses.
- Sept. 1998 B. Hippen and C. Loe, technicians, records of the CCHD/SO, found a 3 inch square aluminum cap monument marked 1989 and RLS 11395, down 0.6 foot in centerline of County Road #115 at Township Road to south and witnessed as follows:
- |         |         |             |          |         |             |
|---------|---------|-------------|----------|---------|-------------|
| 13" Ash | N 38° E | 215.64 feet | 8" Birch | S 35° E | 123.79 feet |
|---------|---------|-------------|----------|---------|-------------|
- Dec. 2006 J.M. Leas, LS 42619, Plat of LONE JACK PINE on file in the CCRO, as Document #A000521343, Section Subdivision indicates corner position.
- April 2012 M.R. Kohout, LS 17774, Certificate of Location of Government Corner, on file in the CCRO as Document No. A000591523, found a ½ inch pin, down 0.35 foot on centerline of County Road #115 and witnessed as follows:
- |            |         |             |         |         |            |
|------------|---------|-------------|---------|---------|------------|
| Power Pole | N 16° E | 112.57 feet | Culvert | S 22° W | 48.45 feet |
| Power Pole | S 29° E | 69.05 feet  |         |         |            |
- July 2017 T. Anderson, technician, records of the CCHD/SO, found an aluminum capped telspar, down 3.7 feet, on the centerlines of 16th Avenue and County Road #115. Removed monument prior to construction.
- Oct. 2017 B. Hippen, technician, records of the CCHD/SO, reset aluminum capped telspar, after County Road construction was completed, down 0.05, on the new centerline of County Road #115 and witnessed as follows:
- |            |         |             |           |         |             |
|------------|---------|-------------|-----------|---------|-------------|
| Power Pole | N 16° E | 112.87 feet | 12" Birch | S 35° E | 123.79 feet |
| Power Pole | S 30° E | 69.12 feet  | 24" CMP   | N 04° W | 150.93 feet |

The monument, recovered and established references for the position are shown on the face of this document.

**Analysis of the recovered record data, field evidence and survey measurements, indicates that the monument recovered by the CCHD/SO in 2017 is the accepted location of this corner.**

**County Coordinates (Cass County South)**

**Northing 278518.44**

**Easting 525161.48**