



A000636849

OFFICE OF THE COUNTY RECORDER
CASS COUNTY, MINNESOTA
CERTIFIED, FILED, AND/OR
RECORDED ON

12/7/2017 1:56:39 PM

AS DOC #: A000636849

PAGES: 2

REC FEES: 0.00

KATHRYN M. NORBY
CASS COUNTY RECORDER

BY SR _____ Dep TX#: 143133

Twp 137 Rge 29 Index No. V.0-07.0

CERTIFICATE OF LOCATION OF GOVERNMENT CORNER

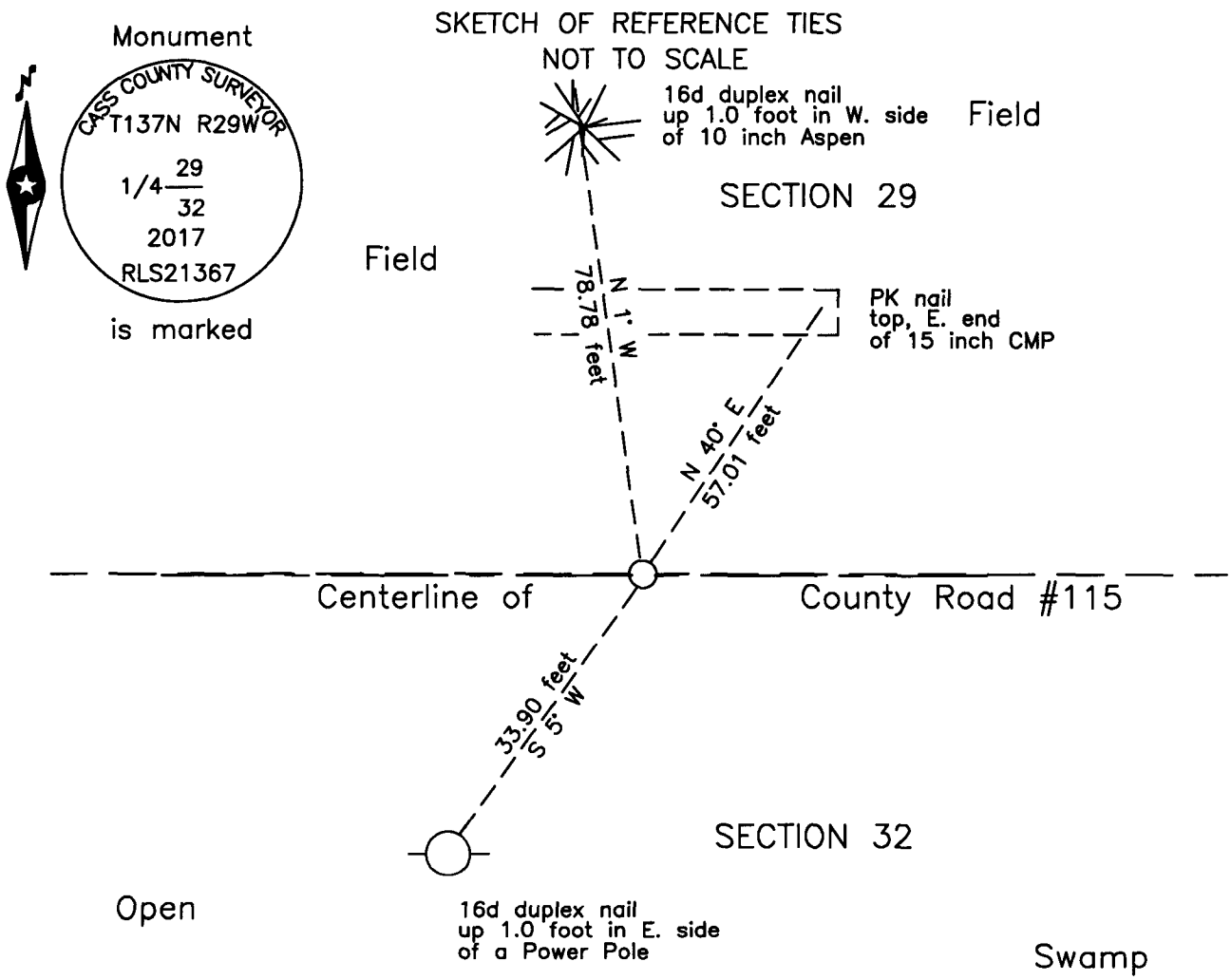
North Quarter corner of Section 32, Township 137 N., Range 29 W., 5th P.M.
State of Minnesota, County of Cass

At the corner location shown on the sketch:

On _____ found _____

left monument as found lowered monument removed monument (explain)

On 20 Oct 2017 placed an 1 inch by 32 inch aluminum tube with aluminum cap,
down 0.05 foot, on new centerline County Road #115.



NOTE:
All bearings are true

Statement of evidence relative to this corner location is on the back of this page.

I hereby certify that this survey, plan or report was prepared by me or under my direct supervision and that I am a duly Licensed Land Surveyor under the laws of the State of Minnesota.

Terry L. Freeman, Cass County Surveyor

Date 12/6/17 MN License No. 21367

Page 1 of 2 A000636849



Index No. V.0-07.0

Statement of Evidence

North Quarter corner of Section 32, Township 137 North, Range 29 West, 5th Principal Meridian.

July 1865 G.B. Wright, General Land Office (GLO) Deputy Surveyor in the notes of the subdivision of Township 137 North, Range 29 West, set a post for the original corner and referenced it as follows:
5" Tamarack S 5° E 205 links (135.30 feet) 18" N. Pine N 41° W 181 links (119.46 feet)
Said records are on file with the Minnesota Historical Society, St. Paul, Minnesota, copies are filed with the Cass County Highway Department, Surveyor's Office (CCHD/SO).

Sept. 1917 J.F. Pomasel, LS 1728, Lateral of SRH #80, Ditch Shelf 3, Book 9, page 2, on file in the CCHD/SO, indicates the subject corner not found, road very crooked at 78+86.6.

Oct. 1925 A.R. Taubman, Assistant Engineer, S.A.R. No. 6, Ditch Shelf 5, Book 153, page 30, on file in the CCHD/SO, indicates corner at station 78+94.1, and notes R.P. as follows:
8" Aspen SW 79.2 feet

April 1927 A.R. Taubman, Assistant Engineer, S.A.R. No. 6, Ditch Shelf 1, Book 3, page 6, on file in the CCHD/SO, and Certificate of Location of Government Corner, on file in the Cass County Recorders Office as Document No. A000583895, indicates corner located from previous road survey R.P.s. A Concrete Monument 4"x 4" top, 6"x 6" base, 18" long and witnessed by triangular concrete monuments as follows:
Conc. Mon. N 51°57' W 46.669 feet Conc. Mon. S 38°03' W 46.669 feet

Sept. 1998 B. Hippen, technician and M. Lawrenson, Backhoe Operator, CCHD records of the CCHD/SO, excavated a 6 feet wide by 8 feet long hole, on centerline of County Road #115 at old fence line to south, the dig was 3.5 feet deep with gravel to 1.5 feet and peat at 3 feet, no evidence of the corner was found. Also excavated a 6 feet wide by 6 feet long hole, on centerline of County Road #115 at old fence line to north, the dig was 3.5 feet deep with gravel to 2 feet and peat at 3 feet, no evidence of the corner was found.

Oct. 2017 B. Hippen, technician, records of the CCHD/SO, set an aluminum Cass County monument after County Road construction was completed, at the lost position, midway and on line between the northeast and northwest corners of Section 32, down 0.05 foot, on the new centerline of County Road #115 and witnessed as follows:
15" CMP N 40° E 57.01 feet 10" Aspen N 1° W 78.78 feet
Power Pole S 05° W 33.90 feet

The monument, recovered and established references for the position are shown on the face of this document.

Analysis of the recovered record data, field evidence and survey measurements, indicates that the monument set by the CCHD/SO in 2017 is the accepted location of this corner.

County Coordinates (Cass County South)

Northing 278519.59

Easting 522516.69