



A000636528

OFFICE OF THE COUNTY RECORDER
CASS COUNTY, MINNESOTA
CERTIFIED, FILED, AND/OR
RECORDED ON

11/27/2017 2:09:39 PM

AS DOC #: A000636528

PAGES: 2

REC FEES: 0.00

KATHRYN M. NORBY
CASS COUNTY RECORDER

BY MW Dep TX#: 142902

Page 1 of 2
A000636528

Twp 136 Rge 32 Index No. N.0-15.0

CERTIFICATE OF LOCATION OF GOVERNMENT CORNER

North Quarter corner of Section 22, Township 136 N., Range 32 W., 5th P.M.
State of Minnesota, County of Cass

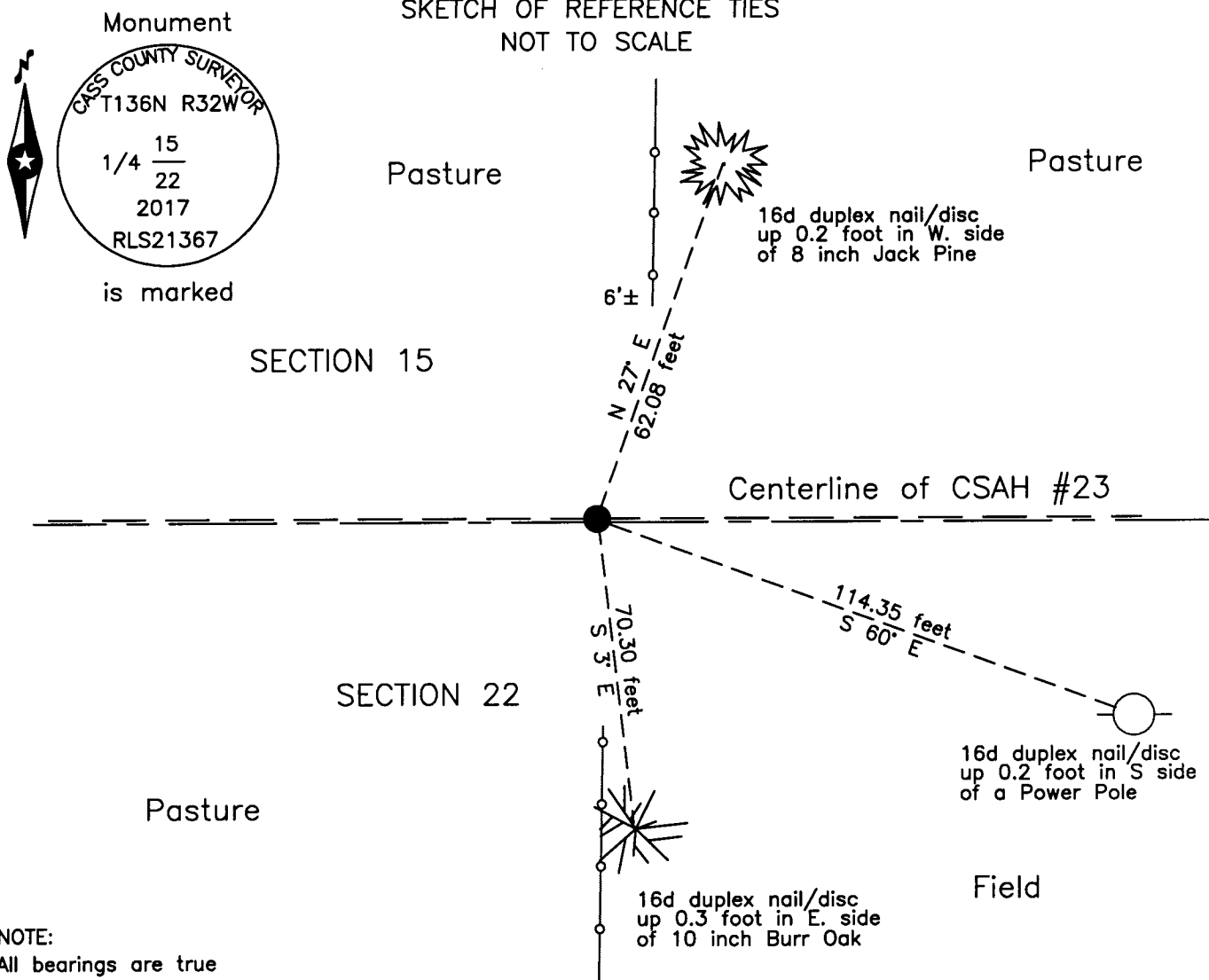
At the corner location shown on the sketch:

On 22 Aug 2017 found a 7/8 inch outside diameter iron pipe capped RLS 23668,
flush, on centerline CSAH #23.

left monument as found lowered monument removed monument (explain)

On 17 Oct 2017 placed an 1 inch by 28 inch aluminum tube with aluminum cap,
down 0.05 foot, on new centerline CSAH #23.

SKETCH OF REFERENCE TIES NOT TO SCALE



NOTE:
All bearings are true

Statement of evidence relative to this corner location is on the back of this page.

I hereby certify that this survey, plan or report was prepared by me or under my direct supervision and that I am a duly Licensed Land Surveyor under the laws of the State of Minnesota.

Terry L. Freeman, Cass County Surveyor

Date 11/22/17 MN License No. 21367

Statement of Evidence**North Quarter corner Section 22, Township 136 North, Range 32 West, 5th Principal Meridian.**

- Nov. 1866 O.E. Garrison, General Land Office (GLO) Deputy Surveyor, notes for the subdivision of Township 136 North, Range 32 West, set a post for the original corner and referenced it as follows:
 10" Aspen S 88 1/2° E 79 links (52.14 feet) 12" Aspen N 84° E 64 links (42.24 feet)
 The above record is on file with the Minnesota Historical Society in St. Paul, Minnesota, copies are filed with the Cass County Highway Department, Surveyor's Office (CCHD/SO).
- March 1918 E.B. Horst, LS 376, acting Cass County Surveyor, Survey Record Number 398, Book C, page 106 and Curo Book 65, pages 64 to 67, on file in the CCHD/SO, state "I find that Whitely and old surveyor began at the corner to sections 18 & 19 on Rge line between Rge's 32 - 33 and run a line East 4 miles to corner of sections 14 - 15 - 22 - 23 which was the first corner he was able to relocate, he then corrected a straight line as near as possible with a compass survey and left same for road center line. The settlers accepted some of his road center stakes as corners which are considerably out of position." Horst begins at the corner to 14 - 15 - 22 - 23 and runs west. At "2640.0 set stake 11 ft. W. of fence." Indicates 5314.2 as the proportional distance for sections 22.
- Feb. 1971 J.R. Worcester, Cass County Engineer, S.P. 11-623-01, on file in the CCHD, indicates corner assumed at intersection of County Road #23 and Fence line to north, Station 182+68.
- Feb. 2017 Survey Crew, Kramer Leas DeLeo, copy on file in the CCHD/SO, searched area for corner evidence and found nothing. Set a 7/8 inch outside diameter iron pipe, capped KRAMER 23668, flush on centerline CSAH #23 and fence line to south. This position agrees with occupation from the 1939 aerial photos. Witnessed as follows:
 8" J. Pine N 27° E 62.08 feet Power Pole S 65° E 114.35 feet
 10" Twin W. Oak S 03° E 70.30 feet
- Aug. 2017 B. Hippen, technician, records of the CCHD/SO, found a 7/8 inch outside diameter iron pipe, flush, on centerline CSAH #23 and KLD witnesses. Remove iron pipe prior to construction of CSAH #23.
- Oct. 2017 B. Hippen, technician, records of the CCHD/SO, set an aluminum Cass County monument, in place of the 7/8 inch iron pipe which is adjacent on the south side, down 0.05 foot, on the new centerline of CSAH #23. The recovered and established references for the position are shown on the face of this document.

Analysis of the recovered record data, field evidence and survey measurements, indicates that the monument recovered by the CCHD/SO in 2017 is the accepted location of this corner.

County Coordinates (Cass County South)

Northing 257013.18

Easting 439511.14