



A000635300

OFFICE OF THE COUNTY RECORDER
CASS COUNTY, MINNESOTA
CERTIFIED, FILED, AND/OR
RECORDED ON

10/12/2017 11:06:30 AM

AS DOC #: A000635300

PAGES: 2

REC FEES: 0.00

KATHRYN M. NORBY
CASS COUNTY RECORDER

BY MW Dep TX#: 141894

Page 1 of 2
A000635300

INDEX NO. R.0-19.0

CERTIFICATE OF LOCATION OF GOVERNMENT CORNER

N 1/4 Corner of Section 26, Township 139 N., Range 26 W., 5TH P.M., State of Minnesota, County of Cass

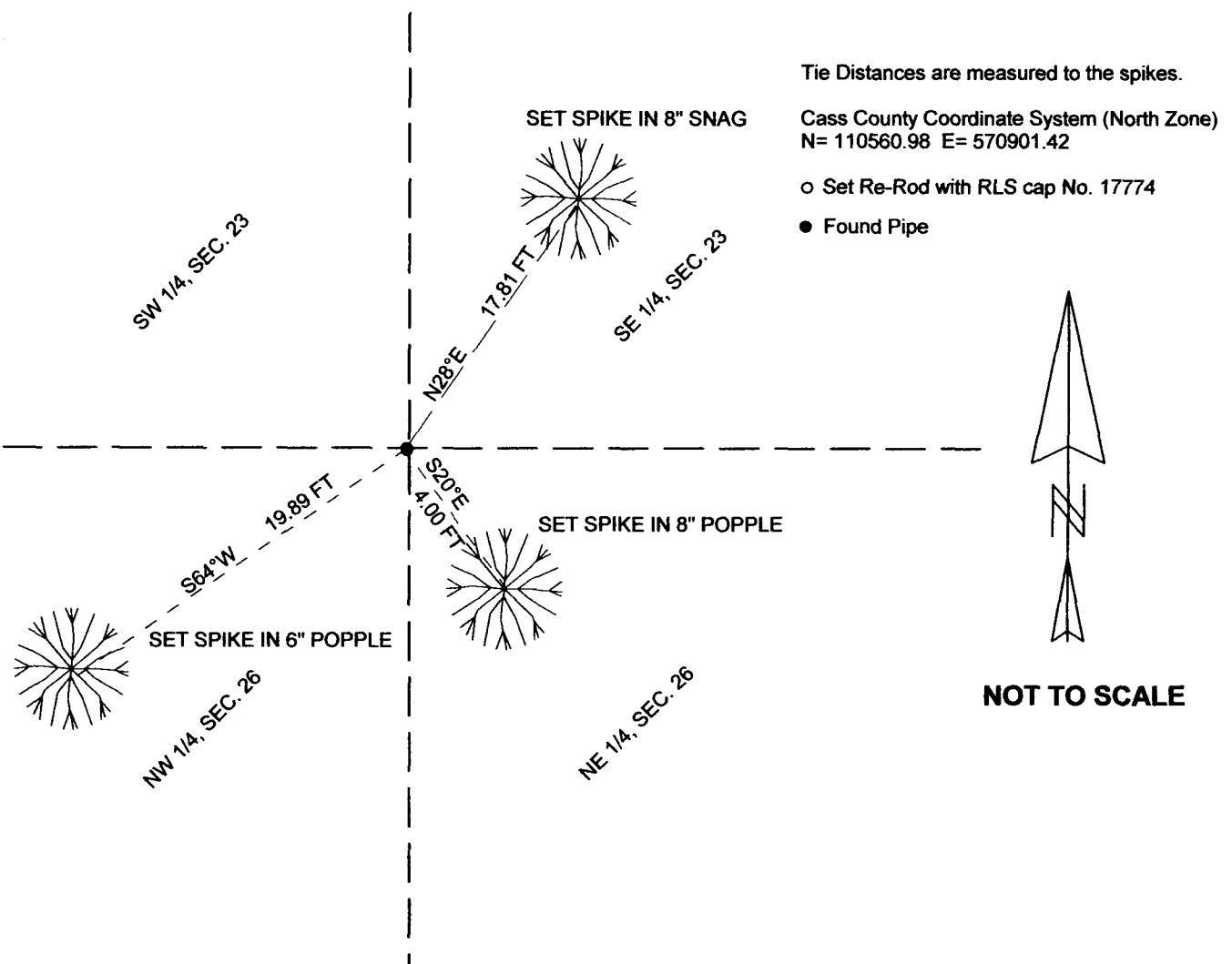
At the corner location shown on the sketch:

On 7/6/17 found a 2" IRON PIPE
Date

X left monument as found lowered monument removed monument (explain)

On _____ placed a _____
Date

SKETCH OF REFERENCE TIES



I hereby certify that this document and the data contained herein was prepared by me or under my direct supervision.

Marvin R. Kohout
Marvin R. Kohout

9/27/2017
Date

Statement of evidence relative to this corner location is on back of page.

License No. 17774

Land surveyor



INDEX NO. R.0-19.0

STATEMENT OF EVIDENCE

NORTH 1/4 CORNER OF SECTION 26, TOWNSHIP 139 N., RANGE 26 W., 5TH P.M.

1863 DEPUTY SURVEYORS GATES A. JOHNSON, AND ALONZO L. THORTON, SET 1/4 POST.

REFERENCES:

WHITE PINE 18" S20°W 15 LINKS (9.9 FT), WHITE PINE 25" N45°E 60 LINKS (39.6 FT)

RECORDS ON FILE AT THE MN HISTORICAL SOCIETY IN ST. PAUL AND COPIES FILED WITH CASS COUNTY HIGHWAY DEPARTMENT/ SURVEYOR'S OFFICE (CCHD/SO).

1938 OTTO NOWAK, LIC. NO. 926, EGAN, FIELD & NOWAK, ON THE PLAT OF SUNSET BEACH ON ROOSEVELT LAKE INDICATES AN IRON MONUMENT AT THE CORNER LOCATION.

DOC. NO. 108688 COUNTY RECORDER'S OFFICE

1977 WALTER E. CURO, LIC. NO. 11395, CURO LAND SURVEYING, ON HIS PLAT OF SURVEY INDICATES HE FOUND AN IRON MONUMENT AT THE CORNER. SURVEY RECORD NO.

4733 CCHD/SO

1986 WALLACE BUCKLER, LIC. NO. 9672, "MAP SHOWS IN PLACE". LAND CORNER CARD

CCHD/SO

2017 SURVEY TECHNICIANS TRAVIS BARE AND JEFF SARKELA, NORTHWOODS SURVEYING, FOUND A 2" DIA. IRON PIPE MONUMENT. THE MONUMENT WAS ACCEPTED

AS MARKING THE CORNER LOCATION. BT TAGS WERE PLACED ON REFERENCES AS

SHOWN ON PAGE 1