



A000634999

OFFICE OF THE COUNTY RECORDER
CASS COUNTY, MINNESOTA
CERTIFIED, FILED, AND/OR
RECORDED ON

10/5/2017 11:08:44 AM

AS DOC #: A000634999

PAGES: 2

REC FEES: 0.00

KATHRYN M. NORBY
CASS COUNTY RECORDER

BY MW Dep TX#: 141694

INDEX NO. J.0-9.0

CERTIFICATE OF LOCATION OF GOVERNMENT CORNER

NE Corner of Section 17, Township139 N., Range25 W., 5TH P.M., State of Minnesota, County of Cass

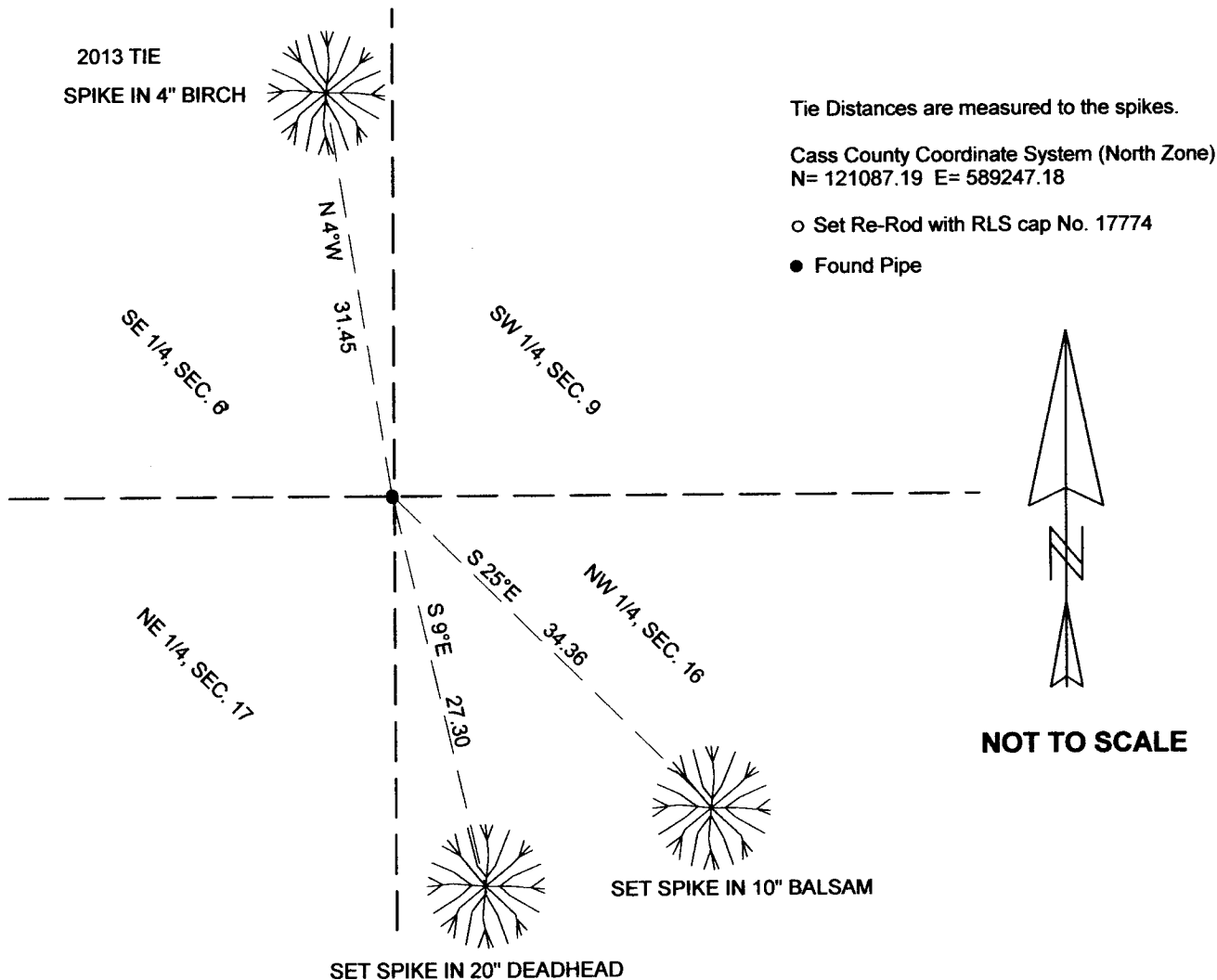
At the corner location shown on the sketch:

On 7/17/17 found a 5/8" REBAR UP 1 FT
Date

left monument as found lowered monument removed monument (explain)

On _____ placed a _____
Date

SKETCH OF REFERENCE TIES



I hereby certify that this document and the data contained herein was prepared by me or under my direct supervision.

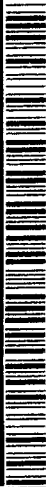
Marvin R. Kohout
Marvin R. Kohout

9/27/2017
Date

Statement of evidence relative to this corner location is on back of page.

License No. 17774

Land surveyor





INDEX NO. J.O-9.0

STATEMENT OF EVIDENCE

NORTHEAST CORNER OF SECTION 17, TOWNSHIP 139 N., RANGE 25 W., 5TH P.M.

1863 DEPUTY SURVEYORS GATES A. JOHNSON AND ALONZO L. THORTON, SET CORNER POST.

REFERENCES:

6 " TAMARACK N60E 29 LINKS (19.14 FT) 3" TAMARACK N56W 21 LINKS (13.86 FT)

5" TAMARACK S26E 21 LINKS (13.86 FT) 6" TAMARACK S50W 16 LINKS (10.56 FT)

RECORDS ON FILE AT THE MN HISTORICAL SOCIETY IN ST. PAUL AND COPIES FILED WITH CASS COUNTY HIGHWAY DEPARTMENT/ SURVEYOR'S OFFICE (CCHD/SO).

1937 CCC, WASHBURN LAKE CAMP BOOK #1 PG. 72 INDICATES A 2 1/2" TAMARACK POST WAS SET. BOOK 3 PG 9 INDICATES THE TRUE CORNER WAS FOUND 165.4' SOUTH AND 143' EAST OF THE APPROXIMATE CORNER. FOUND WAS A TAMARACK STUB SQAED ON 4 SIDES ABOUT 5 CHAINS EAST OF LINE. BOOK 8 PG 26 ALL 4 BT STUMPS WERE RECOVERED AND A 1 1/2" X 54" CAPPED IRON PIPE WAS SET AND THE PREVIOUS APPROX CORNER WAS DESTROYED. REFERENCES:

8 1/2" TAMARACK N80E 216.6 FT 9 1/4 " TAMARACK S84-30E 204.5 FT

3 1/2" BIRCH S66W 69.8 FT 6 3/4" BALSAM N45-30W 175.9 FT

WASHBURN LAKE FORESTRY STATION

2013 JARRETT M. LEAS, LIC. NO. 42619,KLJ, FIELD CREWS SEARCHED FOR CORNER AND ACCESSORIES. FINDING NOTHING, THE CORNER WAS SET BY PROPORTIONING BETWEEN THE NE CORNER OF SEC. 5, THE NE CORNER OF SEC.14, THE NE CORNER OF SEC. 29 AND THE NW CORNER OF SEC. 18. A 5/8"X48" REBAR WITH RLS CAP NO.42619 WAS SET TO MARK THE CORNER POSITION. CERTIFICATE OF LOCATION OF GOVERNMENT CORNER DOC. NO. A000596393 COUNTY RECORDER'S OFFICE

2017 SURVEY TECHNICIANS TRAVIS BARE AND JEFF SARKELA, NORTHWOODS SURVEYING, FOUND THE 2013 MONUMENT. THE MONUMENT WAS ACCEPTED AS MARKING THE CORNER LOCATION. BT TAGS WERE PLACED ON REFERENCES AS SHOWN ON PAGE 1