



A000634997

OFFICE OF THE COUNTY RECORDER
CASS COUNTY, MINNESOTA
CERTIFIED, FILED, AND/OR
RECORDED ON

10/5/2017 11:08:42 AM

AS DOC #: A000634997

PAGES: 2

REC FEES: 0.00

KATHRYN M. NORBY
CASS COUNTY RECORDER

BY MW Dep TX#: 141694

INDEX NO. P.O-21.0

CERTIFICATE OF LOCATION OF GOVERNMENT CORNER

E1/4 Corner of Section 23, Township 139 N., Range 26 W., 5TH P.M., State of Minnesota, County of Cass

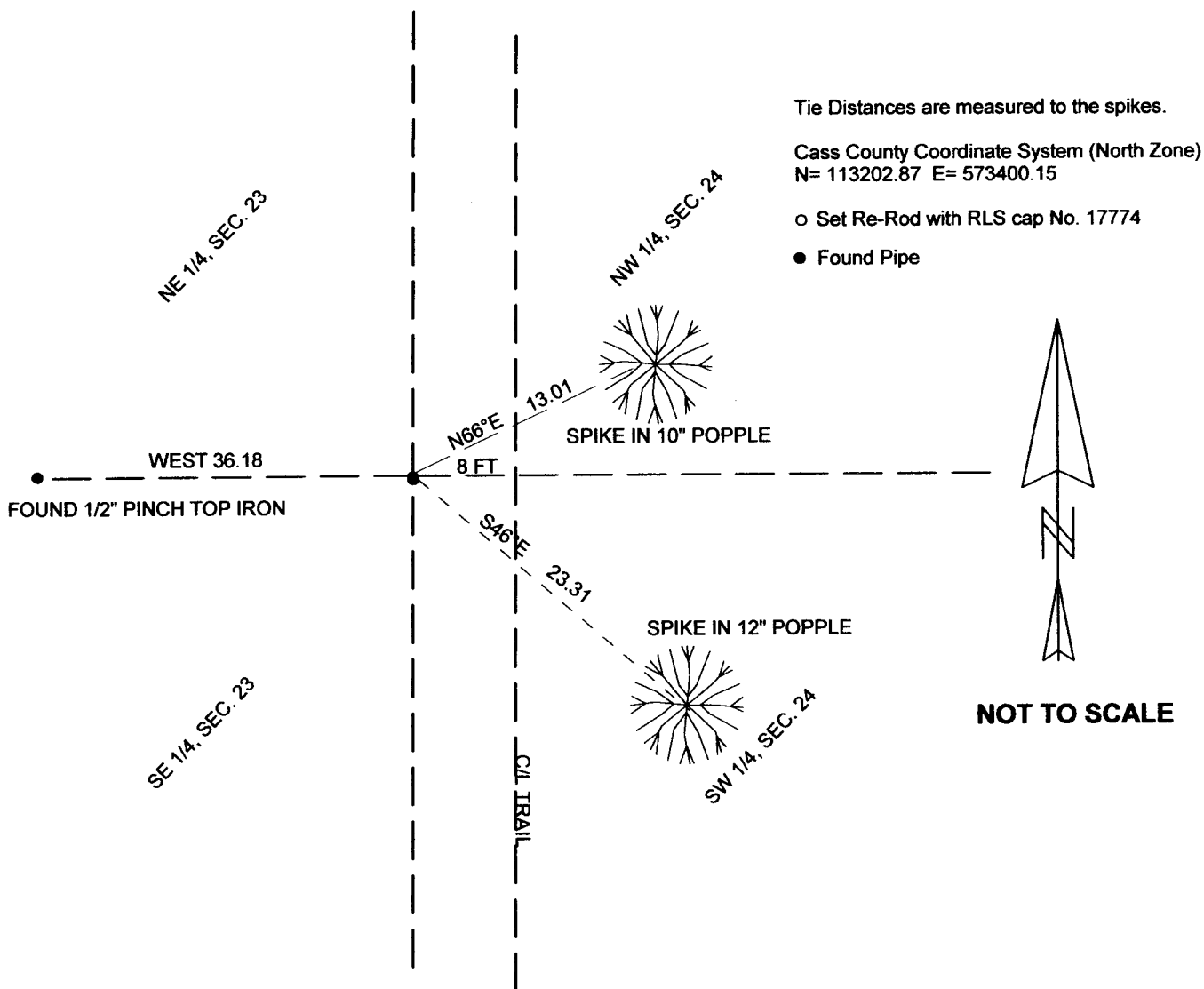
At the corner location shown on the sketch:

On 7/06/2017 found a 1/2" IRON PIPE WITH RLS CAP 24332, DOWN 0.5 FT
Date

X left monument as found lowered monument removed monument (explain)

On _____ placed a _____
Date

SKETCH OF REFERENCE TIES



I hereby certify that this document and the data contained herein was prepared by me or under my direct supervision.

Marvin R. Kohout 9/27/2017
Marvin R. Kohout Date

License No. 17774

Land surveyor

Statement of evidence relative to this corner location is on back of page.





INDEX NO. P.0-21.0

STATEMENT OF EVIDENCE

EAST 1/4 CORNER OF SECTION 23, TOWNSHIP 139 N., RANGE 26 W., 5TH P.M.

1863 DEPUTY SURVEYORS GATES A. JOHNSON, AND ALONZO L. THORTON, SET ¼ POST.

REFERENCES:

WHITE PINE 20" S70°W 30 LINKS (19.8 FT), WHITE PINE 24" N22°E 43 LINKS (28.38 FT)
RECORDS ON FILE AT THE MN HISTORICAL SOCIETY IN ST. PAUL AND COPIES FILED WITH
CASS COUNTY HIGHWAY DEPARTMENT/ SURVEYOR'S OFFICE (CCHD/SO).

1916 J.W. CURO, LIC. NO. 1428, SET 2"X48" BOILER PIPE, SET PROPORTIONALLY.

COUNTY BOOK 'B' PG. 191-194 CCHD/SO

1928 B.H. BRADLEY, LIC. NO. 1188, PLAT OF TINGDALE BROS' LAKE ROSEVELT SHORES, DOC.

NO. 90279 COUNTY RECORDER'S OFFICE

2008 LARRY HUHN, LIC. NO. 24332, NORTHSTAR SURVEYING, USING THE 1928 PLAT

MONUMENTS, SET A ½" DIA. IRON PIPE WITH RLS CAP 24332, 8 FT +/- WEST OF TRAIL.

REFERENCES: PUNCH HOLE IN 12" CULVERT NE 116.00FT, PUNCH HOLE IN 12" CULVERT
NNW 115.44 FT

2013 TERRY L. FREEMAN, LIC. NO. 21367, NORTHERN ENGINEERING & CONSULTING, INC.,

FILED A CORNER CERTIFICATE INDICATING A FOUND ½" DIA. IRON PIPE, DOWN 6",

8 FT +/- WEST OF TRAIL AND A ½" DIA. PIPE, WEST 36.18 FT. CERTIFICATE OF LOCATION

OF GOVERNMENT CORNER NO. A000599329 COUNTY RECORDER'S OFFICE

2017 MARVIN R. KOHOUT, LIC. NO. 17774, KOHOUT LAND SURVEYING, AND SURVEY

TECHNICIANS TRAVIS BARE AND JEFF SARKELA, NORTHWOODS SURVEYING, FOUND THE

2008 MONUMENT AND ACCEPTED IT AS MARKING THE CORNER LOCATION. BT TAGS

WERE PLACED ON REFERENCES AS SHOWN ON PAGE 1