



A000633332

OFFICE OF THE COUNTY RECORDER  
CASS COUNTY, MINNESOTA  
CERTIFIED, FILED, AND/OR  
RECORDED ON

8/10/2017 11:11:36 AM

AS DOC #: A000633332

PAGES: 2

REC FEES: 0.00

KATHRYN M. NORBY  
CASS COUNTY RECORDER

BY SR \_\_\_\_\_ Dep TX#: 140364

Twp 136 Rge 30 Index No. R.0-07.0

### CERTIFICATE OF LOCATION OF GOVERNMENT CORNER

North Quarter corner of Section 29, Township 136 N., Range 30 W., 5th P.M.

State of Minnesota, County of Cass

At the corner location shown on the sketch:

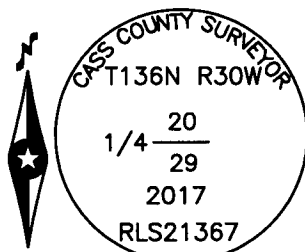
On 3 Aug. 2016 found a 7/8 inch outside diameter iron pipe, capped RLS 11865

left monument as found     lowered monument     removed monument (explain)

On 16 June 2017 placed an 1 inch by 24 inch aluminum tube with aluminum cap, down 0.05 foot, on new centerline of CSAH #24.

Monument

SKETCH OF REFERENCE TIES  
NOT TO SCALE



is marked

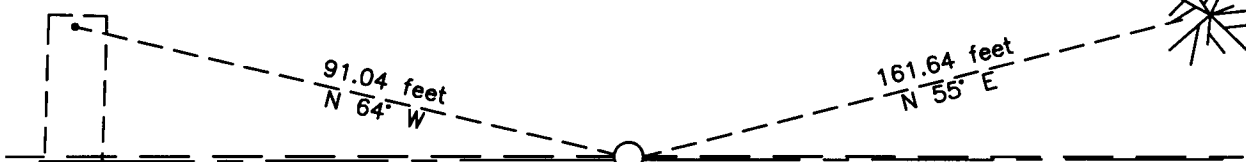
Willow

Swamp

SECTION 20

16d duplex nail/disc  
up 4.9 feet in S side  
of 8 inch Balm of Gilead

Drill hole(2012)  
top N. end  
of 78 inch CMP



Centerline of

County Road #24

SECTION 29

PK nail(2012)  
up 5.0 feet in E side  
of a Power Pole

PK nail(2012)  
up 4.0 feet in W side  
of 6 inch Fence Cor

Alder

Swamp

NOTE:  
All bearings are true

Statement of evidence relative to this corner location is on the back of this page.

I hereby certify that this survey, plan or report was prepared by me or under my direct supervision and that I am a duly Licensed Land Surveyor under the laws of the State of Minnesota.

Terry L. Freeman, Cass County Surveyor  
Date 8/9/17 MN License No. 21367



**Index No. R.0-07.0**

Statement of Evidence

**North Quarter corner of Section 29, Township 136 North, Range 30 West, 5th Principal Meridian.**

March 1967 D. Cole, LS 1286, Cass County Highway Department (CCHD), S.A.P. 11-624-01, on file in the CCHD, Plan indicates corner at Station 262+83.6, on fence line to the North and on new centerline.

May 2012 C.E. Johnson, LS 44530, Certificate of Location of Government Corner, Document Number A000580964, on file in the Cass County Recorders Office, indicates a found pipe LS 11865 and witnesses as follows:

78" CMP punch hole	N 64° W	91.04 feet	Power Pole	S 44° W	69.99 feet
Cor Fence Post	S 02° E	62.27 feet			

Aug. 2016 B. Hippen, technician, records of the CCHD/SO, found a 7/8 inch outside diameter iron pipe, flush, on centerline of CSAH #24, the cap is unreadable, measurements indicate this is C.E. Johnson's position and is accepted as the corner position and witnessed as follows:

78" CMP punch hole	N 64° W	91.04 feet	Power Pole	S 44° W	69.99 feet
Cor Fence Post	S 02° E	62.27 feet	8" Balm of Gilead	N 55° E	161.64 feet

June 2017 B. Hippen, technician, records of the CCHD/SO, set an aluminum Cass County monument in place of the 7/8 inch outside diameter iron pipe, which was placed along side, down 0.05 foot, on the new centerline of CSAH #24.

The monument, recovered and established references for the position are shown on the face of this document.

**Analysis of the recovered record data, field evidence and survey measurements, indicates that the monument set by the CCHD/SO in 2017 is the accepted location of this corner.**

**County Coordinates (Cass County South)**

**Northing 251723.74**

**Easting 494866.57**