



A000633285

OFFICE OF THE COUNTY RECORDER  
CASS COUNTY, MINNESOTA  
CERTIFIED, FILED, AND/OR  
RECORDED ON

8/9/2017 11:05:07 AM

AS DOC #: A000633285

PAGES: 2

REC FEES: 0.00

KATHRYN M. NORBY  
CASS COUNTY RECORDER

BY SR \_\_\_\_\_ Dep TX#: 140334

Page 1 of 2 A000633285

Twp 136 Rge 31 Index No. R.0-21.0

# CERTIFICATE OF LOCATION OF GOVERNMENT CORNER

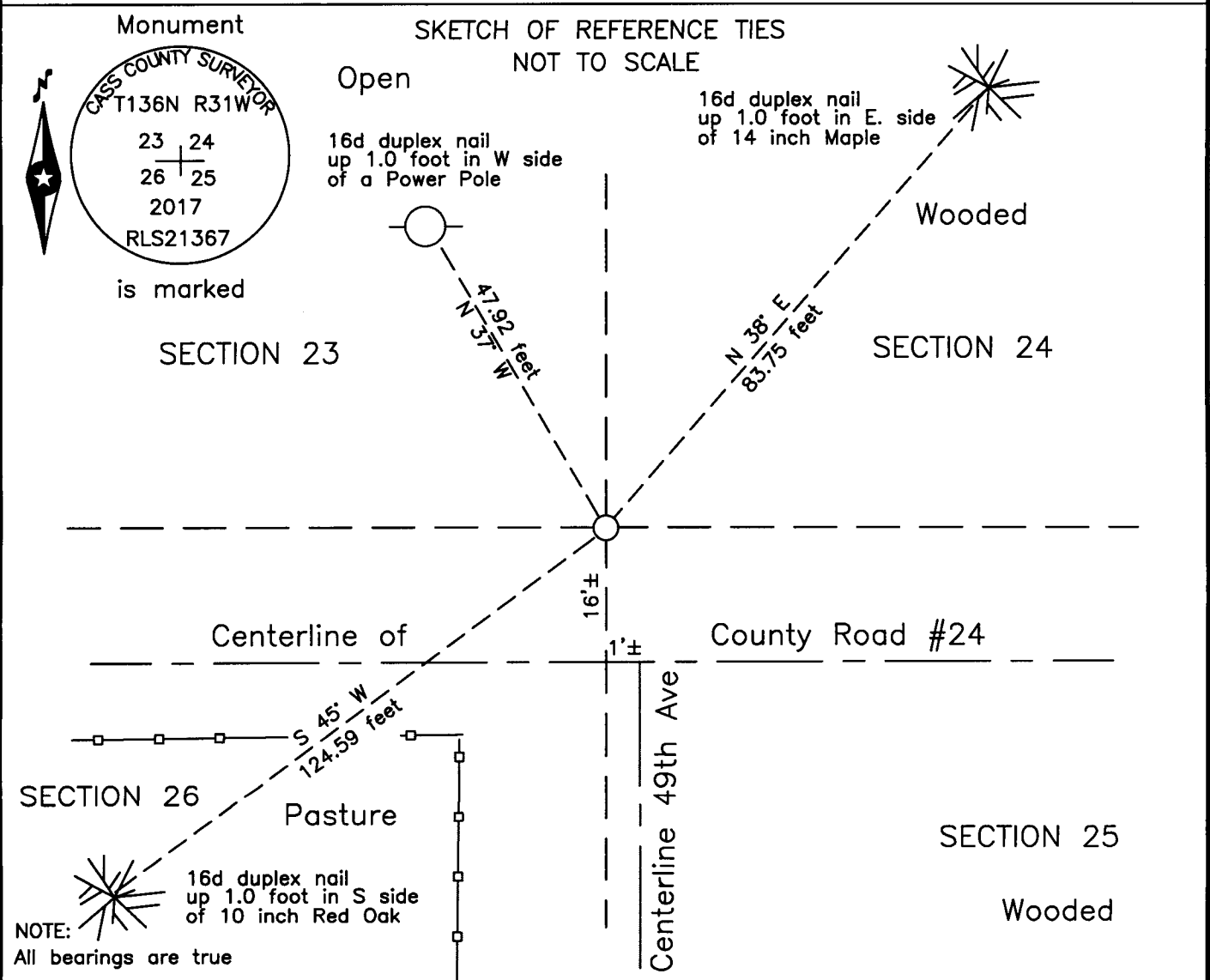
Northeast corner of Section 26, Township 136 N., Range 31 W., 5th P.M.  
State of Minnesota, County of Cass

At the corner location shown on the sketch:

On \_\_\_\_\_ found \_\_\_\_\_

left monument as found     lowered monument     removed monument (explain)

On 6 July 2017 placed an 1 inch by 30 inch aluminum tube with aluminum cap,  
down 0.3 foot, 16'±, north of new centerline of CSAH #24.



Statement of evidence relative to this corner location is on the back of this page.

I hereby certify that this survey, plan or report was prepared by me or under my direct supervision and that I am a duly Licensed Land Surveyor under the laws of the State of Minnesota.

Terry L. Freeman, Cass County Surveyor  
Date 8/9/17 MN License No. 21367



**Index No. R.0-21.0**

Statement of Evidence

**Northeast corner of Section 26, Township 136 North, Range 31 West, 5th Principal Meridian.**

- Aug. 1870 R. Cronk, General Land Office (GLO) Deputy Surveyor in the notes of the subdivision of Township 136 North, Range 31 West, set a post for the original corner and referenced it as follows:  

10" Aspen	N 20° E	15 links (9.90 feet)	8" Aspen	N 45° W	27 links (17.82 feet)
5" Aspen	S 50° E	72 links (47.52 feet)	7" Aspen	S 83° W	81 links (53.46 feet)

 Said records are on file with the Minnesota Historical Society, St. Paul, Minnesota, copies are filed with the Cass County Highway Department, Surveyor's Office (CCHD/SO).
  
- Oct. 1903 W.H. Hallett, Surveyors Report, Certificate image 5249, on file in the CCHD/SO, road survey indicates the subject corner position in a road.
  
- June 1910 A.W. Moulster, LS 967, Survey Record #191, Book A, page 457 and Curo Misc. Book 5, page 29, on file in the CCHD/SO, states "Found the NE bearing tree – only a stub left, but BT was plain. I set the cor from it – the rest of the BT's are gone.
  
- Oct. 1911 A.W. Moulster, LS 967, Survey Record #191, Book A, page 463-464 and Survey Record #277, Book B, page 167 and Curo Book 50-1, pages 119, 123, 127 and 130, on file in the CCHD/SO, states "Setting on corner 23-24-25-26 this corner I set last year from the NE Poplar". And "I find stub – down and Sq. oak hub in road – which is the corner." He set 2" gal. pipe with cap and anchor rod, in concrete with flat rock under bottom end of pipe. Pictorial shows corner relative to School survey.
  
- March 1967 D. Cole, LS 1286, Cass County Highway Department (CCHD), S.A.P. 11-624-01, on file in the CCHD, Plan indicates corner is 17 feet, more or less, North of centerline P.O.T. Station 128+54.5, at intersection with Pub. road South.
  
- Circa 2003 Westwood Professional Services Inc, Worksheet, copy on file in the CCHDSO, indicates a fence line near the subject corner.
  
- Oct. 2014 P.A. Trottier, LS 41002, Certificate of Location of Government Corner, on file in the Cass County Recorders Office as Document Number A000608440, indicates no evidence of corner was found, set a ½ inch iron pipe capped RLS 41002, flush with ground, at obliterated position determined from CCHD road plans and witnessed as follows:  

Power Pole	N 46° W	47.42 feet	12" Oak	N 20° E	70.93 feet
10" Poplar	S 23° E	89.00 feet			
  
- Aug. 2016 B. Hippen, technician and C. Reynolds, CCHD equipment operator, records of the CCHD/SO, prior to reconstruction of CSAH # 24, excavated a 10 foot east-west by 5 foot north-south area based on remains of the School Survey in 1911. The dig was 5 feet deep to natural ground, no evidence was recovered.
  
- July 2017 B. Hippen, technician, records of the CCHD/SO, set an aluminum Cass County monument at the prorated distance of the 1911 Survey Record, from the recovered School survey monuments, 16 feet, more or less, north of the centerline of CSAH #24 and 1 foot, more or less, west of centerline of 49th Avenue and witnessed as follows:  

14" Maple	N 38° E	83.75 feet	Power Pole	N 37° W	47.92 feet
10" R. Oak	S 45° W	124.59 feet			

The monument, recovered and established references for the position are shown on the face of this document.

**Analysis of the recovered record data, field evidence and survey measurements, indicates that the monument set by the CCHD/SO in 2016 is the accepted location of this corner.**

**County Coordinates (Cass County South)**

**Northing 251745.75**

**Easting 481437.89**