



A000633284

OFFICE OF THE COUNTY RECORDER
CASS COUNTY, MINNESOTA
CERTIFIED, FILED, AND/OR
RECORDED ON

8/9/2017 11:05:06 AM

AS DOC #: A000633284

PAGES: 2

REC FEES: 0.00

KATHRYN M. NORBY
CASS COUNTY RECORDER

BY SR Dep TX#: 140334

Page 1 of 2 A000633284

Twp 136 Rge 31 Index No. R.0-19.0

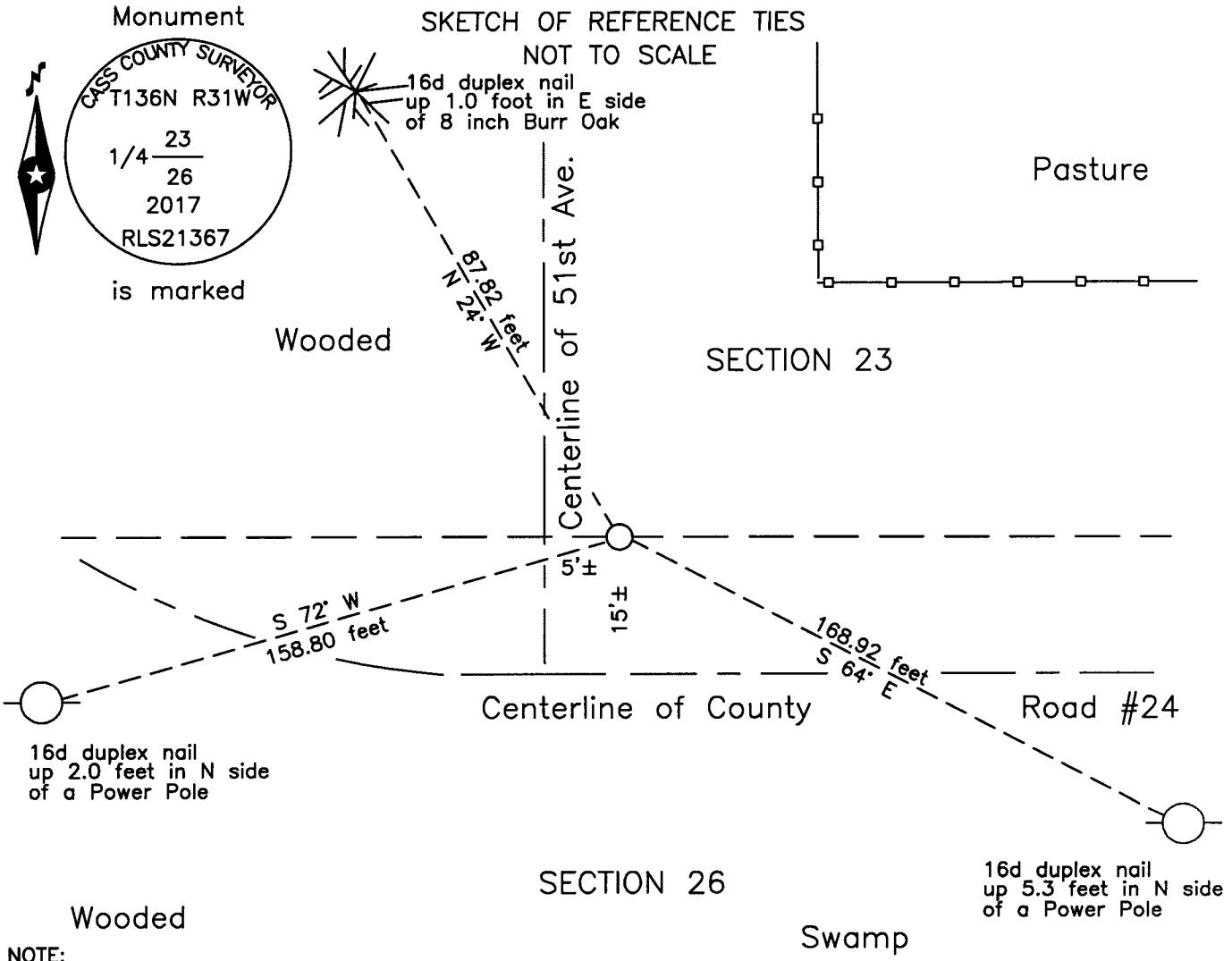
CERTIFICATE OF LOCATION OF GOVERNMENT CORNER

North Quarter corner of Section 26, Township 136 N., Range 31 W., 5th P.M.
State of Minnesota, County of Cass

At the corner location shown on the sketch:

On _____ found _____

left monument as found lowered monument removed monument (explain)
On 16 June 2017 placed an 1 inch by 20 inch aluminum tube with aluminum cap,
down 0.05 foot, 15'±, north of new centerline of CSAH #24.



NOTE:
All bearings are true

Statement of evidence relative to this corner location is on the back of this page.

I hereby certify that this survey, plan or report was prepared by me or under my direct supervision and that I am a duly Licensed Land Surveyor under the laws of the State of Minnesota.

Terry L. Freeman, Cass County Surveyor
Date 8/9/17 MN License No. 21367

**Index No. R.0-19.0**Statement of Evidence**North Quarter corner of Section 26, Township 136 North, Range 31 West, 5th Principal Meridian.**

- Aug. 1870 R. Cronk, General Land Office (GLO) Deputy Surveyor in the notes of the subdivision of Township 136 North, Range 31 West, set a post for the original corner and referenced it as follows:
 7" Elm N 50° W 34 links (22.44 feet) 8" Elm S 1° E 21 links (13.86 feet)
 Said records are on file with the Minnesota Historical Society, St. Paul, Minnesota, copies are filed with the Cass County Highway Department, Surveyor's Office (CCHD/SO).
- Oct. 1903 W.H. Hallett, Surveyors Report, Certificate image 5249, on file in the CCHD/SO, road survey indicates the subject corner position in a road.
- Oct. 1911 A.W. Moulster, LS 967, Survey Record #191, Book A, page 463-464 and Curo Book 50-1, pages 119, 120 and 135, on file in the CCHD/SO, lists the GLO witnesses and states "Find a 8 ½ or 9" Elm-standing south of the road-30' more or less, marked BT-S26-but marked thus, all the marks being on the upper and only blaze-this is the way Hallet always marked his corners, i e-upside down. Measuring the growth – it measures 2" this leaves the tree a diameter of 5" when marked, no blaze or BT at bottom. As this tree does not correspond with the Gov. size, and is not marked as the Gov. marked their trees, I do not use it." Later set 1 ¼"x 4" iron pipe with no cap at lost position.
- Sept. 1912 J.W. Curo, LS 1428, Survey Record #240, Book B, page 15, on file in the CCHD/SO, states "We set the ¼ corner between Sections 23 and 26 Township 136 Range 31, and run North". "For the first mile our line runs parallel to the N and S wagon road and about 30 feet west of the center of the road".
- March 1967 D. Cole, LS 1286, Cass County Highway Department (CCHD), S.A.P. 11-624-01, on file in the CCHD, Plan indicates corner at intersection of old road and Township road to north, 15 feet, more or less, North of new centerline Station 101+82.3.
- Circa 2003 Westwood Professional Services Inc, Worksheet, copy on file in the CCHDSO, indicates a position for the subject corner.
- Oct. 2014 P.A. Trottier, LS 41002, Certificate of Location of Government Corner, on file in the Cass County Records Office as Document Number A000608439, indicates no evidence of corner was found, set a ½ inch iron pipe capped RLS 41002, flush with ground, at obliterated position determined from CCHD road plans and witnessed as follows:
 Power Pole S 72° W 153.32 feet 8" Poplar N 53° W 72.95 feet
 Power Pole S 70° E 174.28 feet
- June 2017 B. Hippen, technician, records of the CCHD/SO, set an aluminum Cass County monument at the prorated distance of the 1911 Survey Record, from the recovered School survey monuments, 16 feet, more or less, north of the centerline of CSAH #24 and 6 feet, more or less, east of centerline of 51st Avenue and witnessed as follows:
 Power Pole S 72° W 158.80 feet 8" B. Oak N 24° W 87.82 feet
 Power Pole S 64° E 168.92 feet

The monument, recovered and established references for the position are shown on the face of this document.

Analysis of the recovered record data, field evidence and survey measurements, indicates that the monument set by the CCHD/SO in 2016 is the accepted location of this corner.

County Coordinates (Cass County South)

Northing 251759.73

Easting 478767.79