



A000632632

OFFICE OF THE COUNTY RECORDER  
CASS COUNTY, MINNESOTA  
CERTIFIED, FILED, AND/OR  
RECORDED ON

7/19/2017 11:05:30 AM

AS DOC #: A000632632

PAGES: 2

REC FEES: 0.00

KATHRYN M. NORBY  
CASS COUNTY RECORDER

BY SR \_\_\_\_\_ Dep TX#: 139850

Page 1 of 2 A000632632

INDEX NO. E.0-17.0

# CERTIFICATE OF LOCATION OF GOVERNMENT CORNER

NE Corner of Section 10 Township 134 N., Range 31 W., 5TH P.M., State of Minnesota, County of Cass

At the corner location shown on the sketch:

On 3/22/2017 found a IRON MONUMENT WITH RLS CAP NO. 23668, 54 FEET NORTH OF C/L TWP. ROAD  
Date

left monument as found       lowered monument       removed monument (explain)

On \_\_\_\_\_ placed a \_\_\_\_\_  
Date

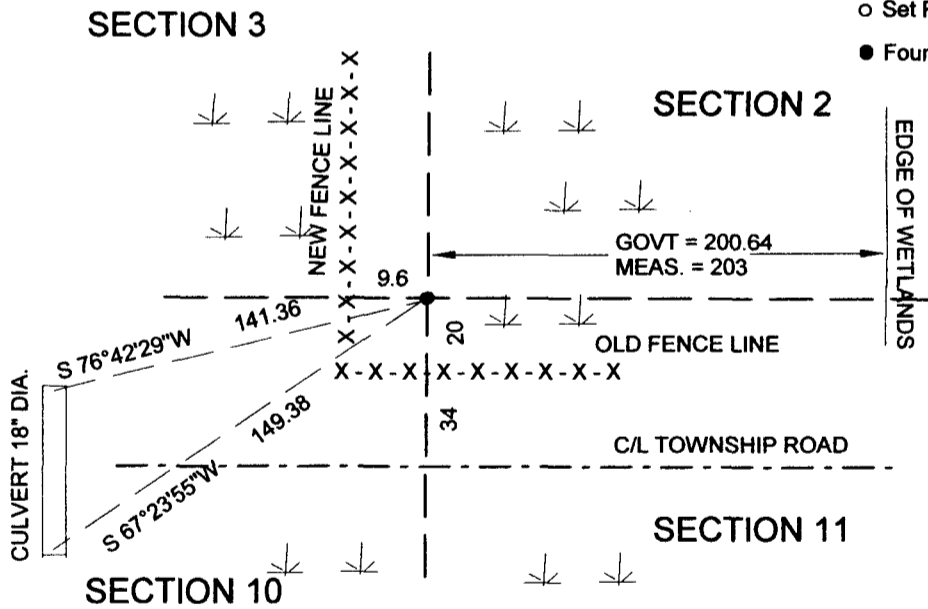
## SKETCH OF REFERENCE TIES

Tie Distances are measured to the spikes.

Cass County Coordinate System (South Zone)  
N= 204099.79 E= 476182.21

○ Set Re-Rod with RLS cap No. 17774

● Found Pipe



NOT TO SCALE

I hereby certify that this document and the data contained herein was prepared by me or under my direct supervision.

Marvin R. Kohout      7/12/2017  
Marvin R. Kohout      Date

License No. 17774

Land surveyor

Statement of evidence relative to this corner location is on back of page.



**INDEX NO. E.0-17.0**

**STATEMENT OF EVIDENCE**

**NORTHEAST CORNER OF SECTION 10, TOWNSHIP 134 N., RANGE 31 W., 5<sup>TH</sup> P.M.**

- 1869 T. B. WALKER, DEPUTY GOVERNMENT SURVEYOR, SET A WOODEN POST, REFERENCES :  
14" OAK N 4 E 890 LINKS (587.4 FT) 20" DEAD TAMARAC S 5 W 840 LKS (554.4 FT)  
6" SPRUCE N 2 E 1550 LS (1023 FT) 8" TAMARAC N 3 W 1602 LKS (1057.32 FT)  
RECORDS ON FILE AT THE MN HISTORICAL SOCIETY IN ST. PAUL AND COPIES FILED WITH  
CASS COUNTY HIGHWAY DEPARTMENT/ SURVEYOR'S OFFICE (CCHD/SO).
- 1912 JOHN W. CURO, LIC. NO. 1428, CASS COUNTY SURVEYOR, SET A STAKE, REFERENCES:  
16" DIA. STONE N 85-30 E 60.98 FT 3" POPLAR S 41-36 E 112.22  
SURVEY RECORD 193 COUNTY SURVEY RECORD BOOK "A", PG 473-477 CCHD/SO
- 2006 JAMES KRAMER, LIC. NO. 23668, OF KRAMER LEAS DELEO, ON HIS CERTIFICATE OF SURVEY  
HAS A COMPLETE SUBDIVISION OF SECTION 10 TWP.134 N., RGE 31 W. HE INDICATES HE  
SET A MONUMENT AT THE CORNER LOCATION. CERTIFICATE OF SURVEY NO. 8085 CCHD/SO
- 2007 JAMES KRAMER, LIC. NO. 23668, OF KRAMER LEAS DELEO, ON HIS CERTIFICATE OF SURVEY  
HAS A COMPLETE SUBDIVISION OF SECTION 2 TWP.134 N., RGE 31 W. HE INDICATES A  
FOUND MONUMENT AT THE CORNER LOCATION. CERTIFICATES OF SURVEY NO. 4007 AND  
NO. 6095 CCHD/SO
- 2017 MARVIN R. KOHOUT, LIC. NO. 17774, KOHOUT LAND SURVEYING, AND SURVEY TECHNICIAN  
TRAVIS BARE, NORTHWOODS SURVEYING, FOUND THE MOUMENT AT THE LOCATION  
INDICATED BY KRAMER AND ACCEPTED IT AS MARKING THE CORNER LOCATION.  
REFERENCES AS SHOWN ON PAGE 1