

Page 1 of 2 A000632434



A000632434

OFFICE OF THE COUNTY RECORDER
CASS COUNTY, MINNESOTA
CERTIFIED, FILED, AND/OR
RECORDED ON

7/13/2017 11:10:43 AM

AS DOC #: A000632434

PAGES: 2

REC FEES: 0.00

KATHRYN M. NORBY
CASS COUNTY RECORDER

BY KF Dep TX#: 139712

INDEX NO. J.0-15.0

CERTIFICATE OF LOCATION OF GOVERNMENT CORNER

N 1/4 Corner of Section 15, Township 135 N., Range 30 W., 5TH P.M., State of Minnesota, County of Cass

At the corner location shown on the sketch:

On _____ found a _____
Date

left monument as found lowered monument removed monument (explain)

On 5/12/2017 placed a 3/8 DIA. RE-ROD WITH RLS CAP 17774
Date

SKETCH OF REFERENCE TIES

Tie Distances are measured to the spikes.

Cass County Coordinate System (South Zone)
N= 230688.98 E= 505534.54

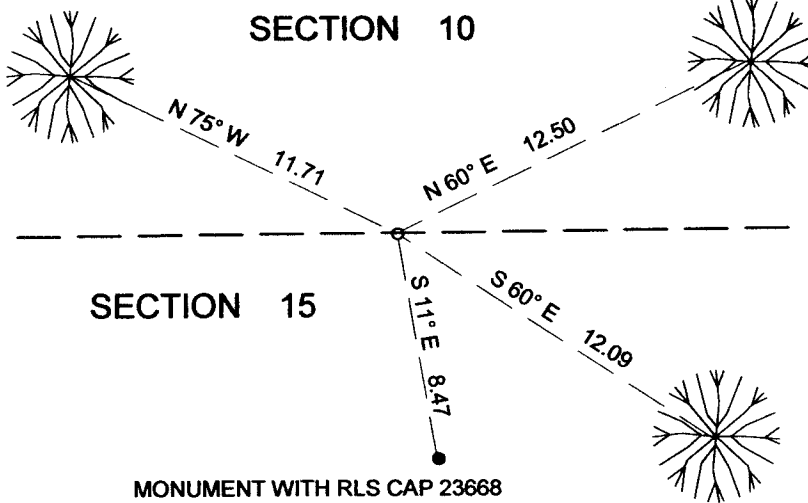
○ Set Re-Rod with RLS cap No. 17774

● Found Pipe

SPIKE IN 14" OAK

SPIKE IN 6" ELM

SECTION 10



NOT TO SCALE
COMPASS BEARINGS

I hereby certify that this document and the data contained herein was prepared by me or under my direct supervision.

Marvin R. Kohout 7/5/2017
Marvin R. Kohout Date

Statement of evidence relative to this corner location is on back of page.

License No. 17774

Land surveyor

**INDEX NO. J.0-15.0****STATEMENT OF EVIDENCE****NORTH QUARTER CORNER OF SECTION 15, TOWNSHIP 135 N., RANGE 30 W., 5TH P.M.**

- 1869 GOVERNMENT DEPUTY SURVEYOR THOMAS B. WALKER SET A WOOD POST, REFERENCES :
10" ASPEN N62W 7 LINKS (4.62 FT) 10" SPRUCE S25E 28 LINKS (18.48 FT)
RECORDS ON FILE AT THE MN HISTORICAL SOCIETY IN ST. PAUL AND COPIES FILED WITH
CASS COUNTY HIGHWAY DEPARTMENT/ SURVEYOR'S OFFICE (CCHD/SO).
- 2004 RANDY A. QUALE, LIC. NO. 42630, WIDSETH SMITH NOLTING, IN HIS SECTION
SKETCH, INDICATES A LOCATION FOR THE CORNERT CERTIFICATE OF SURVEY 2379 CCHD/SO
- 2007 JAMES KRAMER, LIC. NO. 23668, KRAMER LEAS DELEO, SET AN IRON MONUMENT TO MARK
THE CORNER LOCATION. CERTIFICATE OF SURVEY 3717 CCHD/SO
- 2017 B. HIPPEN, SURVEY TECHNICIAN, CCHD/SO, SET AN ALUMINUM CASS COUNTY MONUMENT
TO MARK THE NEW LOCATION OF THE NORTHEAST CORNER OF SECTION 16. THIS CORNER
DOES NOT AGREE WITH THE LOCATION USED IN THE 2004 AND 2007 SURVEYS THEREBY
CHANGING THE LOCATION OF THE NORTH QUARTER. CASS COUNTY SURVEYOR, TERRY
FREEMAN, FILED A CERTIFICATE OF LOCATION OF GOVERNMENT CORNER FOR NORTHEAST
CORNER SECTION 16 AS DOC. #A000631628 COUNTY RECORDER'S OFFICE, CCHD/SO
- 2017 MARVIN R. KOHOUT, LIC. NO. 17774, KOHOUT LAND SURVEYING, AND SURVEY TECHNICIAN
TRAVIS BARE, NORTHWOODS SURVEYING, FOUND A 3/8" DIA. RE-ROD AS INDICATED BY LEAS
IN 2006. REJECTED THE RE-ROD AS MARKING THE CORNER POSITION AND BY SINGLE
PROPORTIONATE METHOD SET AN IRON MONUMENT TO MARK THE CORNER LOCATION.
REFERENCES AS SHOWN ON PAGE 1