



A000631631

OFFICE OF THE COUNTY RECORDER
CASS COUNTY, MINNESOTA
CERTIFIED, FILED, AND/OR
RECORDED ON

6/15/2017 10:34:29 AM

AS DOC #: A000631631

PAGES: 2

REC FEES: 0.00

KATHRYN M. NORBY
CASS COUNTY RECORDER

BY SR _____ Dep TX#: 139071

Page 1 of 2 A000631631

Twp 135 Rge 30 Index No. P.0-13.0

CERTIFICATE OF LOCATION OF GOVERNMENT CORNER

East Quarter corner of Section 21, Township 135 N., Range 30 W., 5th P.M.

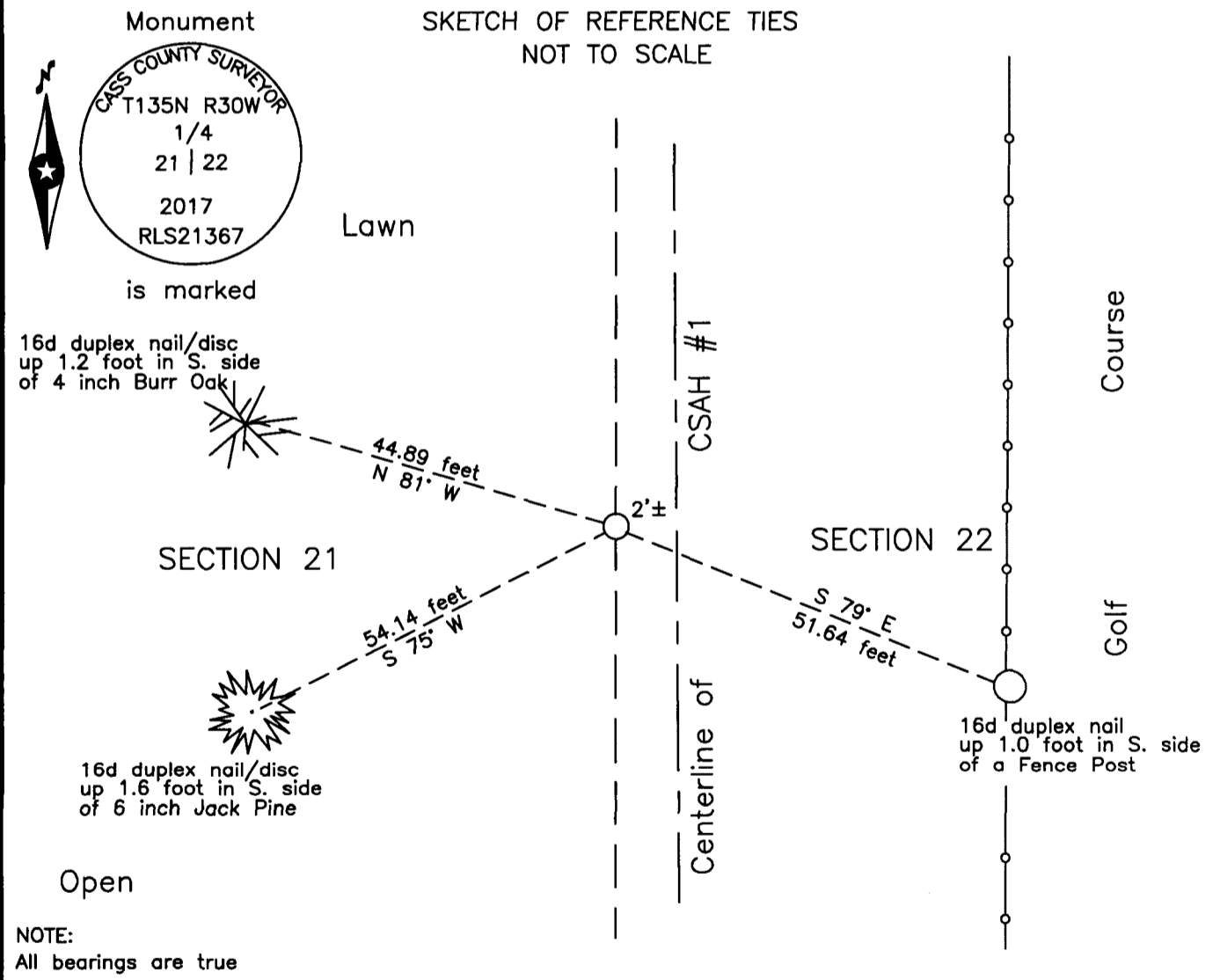
State of Minnesota, County of Cass

At the corner location shown on the sketch:

On 25 Aug. 2016 found a large stone near centerline and 1915 stationing.

left monument as found lowered monument removed monument (explain)

On 15 May 2017 placed a 1 inch by 30 inch aluminum tube with aluminum cap,
down 0.05 foot, 2 feet± west of the new centerline CSAH #1.



Statement of evidence relative to this corner location is on the back of this page.

I hereby certify that this survey, plan or report was prepared by me or under my direct supervision and that I am a duly Licensed Land Surveyor under the laws of the State of Minnesota.

Terry L. Freeman, Cass County Surveyor
Date 6/14/17 MN License No. 21367



Index No. P.0-13.0

Statement of Evidence

East Quarter corner of Section 21, Township 135 North, Range 30 West, 5th Principal Meridian.

- Oct. 1869 T.B. Walker, General Land Office (GLO) Deputy Surveyor in the notes of the subdivision of Township 135 North, Range 30 West, set a post for the original corner and referenced it as follows:
 8" Oak S 50° W 134 links (88.44 feet) 3" Aspen S 34° E 116 links (76.56 feet)
 Said records are on file with the Minnesota Historical Society, St. Paul, Minnesota, copies are filed with the Cass County Highway Department, Surveyor's Office (CCHD/SO).

- Aug. 1912 Home Brook Township Road Order, on file at the CCHD/SO, indicates a road on the line between Section 15 and 16 and states "running North between sections 21 & 22 and 15 & 16 and 9 & 10 to the quarter line."

- July 1915 C.D. Konzett, LS 428, Engineer, S. R. #80 Book 10, Shelf 4, page 2, on file in the CCHD/SO, states "1/4 Cor. Stone" at station 674+41.5.

- Circa 1916 State Rural Highway No. 80, Survey Record No. 331, Book B, page 473, on file in the CCHD/SO, indicates station 674+41.5 ¼ Cor. Secs. 21-22.

- Circa 1916 S.R.H. #80, Profile Book #1, on file in the CCHD/SO, Ditch Books, Shelf 2, Book 1 P, page 11A, indicates 1/4 Cor. Stone at station 674+41.5.

- 1957 Cass County Highway Department (CCHD), S.A.P. 11-601-01, on file in the CCHD, Land Tie notes indicate corner at Station 615+82, no evidence of land division.

- Feb. 1958 D. Cole, LS 1286, CCHD, S.A.P. 11-601-01, on file in the CCHD, plan indicates assumed corner on centerline at Station 615+81.8.

- Aug. 2016 B. Hippen, technician and C. Reynolds, CCHD equipment operator, records of the CCHD/SO, prior to reconstruction of CSAH #1, excavated a 6 foot east-west by 10 foot north-south area based on centerline of centerline of CSAH #1 and 1915 Stationing. The dig was 3 feet deep to natural ground. Three large stones were recovered 2.5 feet down, the most southerly of these fits favorably with centerline and 1915 stationing.

- May 2017 B. Hippen, technician, records of the CCHD/SO, set an aluminum Cass County monument in place of the large stone recovered, 2 feet, more or less, west of the new centerline of CSAH #1 and witnessed as follows:
 4" B. Oak N 81° W 44.89 feet Fence Post S 79° E 51.64 feet
 6" J. Pine S 75° W 54.14 feet

The monument, recovered and established references for the position are shown on the face of this document.

Analysis of the recovered record data, field evidence and survey measurements, indicates that the monument set by the CCHD/SO in 2017 is the correct perpetuation of this corner.

County Coordinates (Cass County South)

Northing 222710.73

Easting 502968.12