



A000631057

OFFICE OF THE COUNTY RECORDER  
CASS COUNTY, MINNESOTA  
CERTIFIED, FILED, AND/OR  
RECORDED ON

5/24/2017 1:33:38 PM

AS DOC #: A000631057

PAGES: 2

REC FEES: 0.00

KATHRYN M. NORBY  
CASS COUNTY RECORDER

BY SR Dep TX#: 138631

Page 1 of 2 A000631057

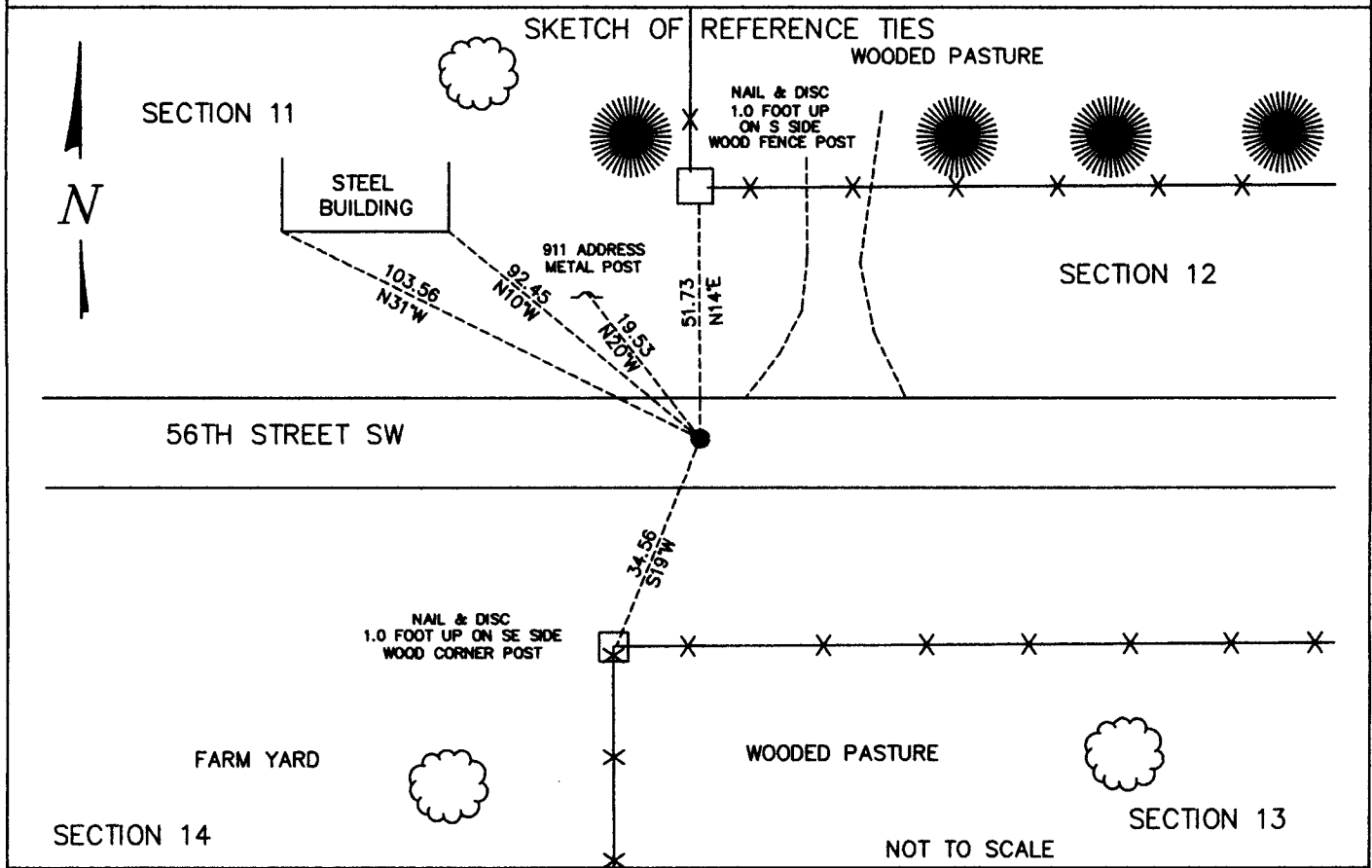
### CERTIFICATE OF LOCATION OF GOVERNMENT CORNER

Index No. J.O - 21.0

NE Corner of Section 14, Township 136, Range 32, 5 P.M.  
STATE OF MINNESOTA, County of CASS

At the corner location shown on the sketch:

- On \_\_\_\_\_ found a \_\_\_\_\_
- left monument as found,  lowered monument,  removed monument (explain)
- On March 21, 2017 placed a 5/8" PIPE EMBOSSED WITH CAP #45334 0.3' DOWN ON C OF 56TH STREET



Statement of evidence relative to this corner location is on back of this page.

I hereby certify that this document was researched and prepared by me or under my direct supervision.

SIGNATURE Kathryn M. Norby

DATE 4-29-2017 Registration No. 45334

Title:  Land Surveyor  Professional Engineer  County Surveyor  County Engineer



J.0 – 21.0

The Northeast Corner of Section 14, Township 136 North, Range 32 West of the Fifth Principal Meridian, Cass County, Minnesota, was established as part of the Original Public Land Survey during 1866. The Original Public Land Survey was done by Oscar Garrison, U.S. Deputy Surveyor. The Original monumentation was a set wood post to mark this corner position with bearing tree as follows:

- 9" Spruce N9°30'W – 5 links (3.30 feet)
- 8" Spruce N10°30'W – 10 links (6.60 feet)
- 6" Balsam S12°30'E – 16 links (10.56 feet)
- 7" Birch S77°W – 23 links (15.18 feet)

Information on file in the MN Historical Society, St. Paul, MN. Copies in file in the Cass County Highway Dept. Surveyors Office (CCHD/SO).

On March 13, 2017 Survey Mapping Solutions, Inc. (SMS) survey crew searched for the corner and found nothing. Calculated a new position based on a lost position proportionately between NE corner of Section 15 and NE corner of Section 13 for Latitudinal control and located the centerline of Lateral 2 of the Judicial Ditch No. 7 at the NE Corner of Section 11 and NE corner of Section 23 for Longitudinal control.

On March 21, 2017, a Survey Mapping Solutions, Inc. (SMS) survey crew set a ½" rebar with a cap stamped "RLS 45334" on centerline of 56th Street SW .

The recovered and established references for the position are shown on the face of this document. Analysis of the recovered data, field evidence and survey measurements, indicates that the monument set in 2017 by SMS is the correct perpetuation of this corner. The position fits well with the occupation of the exiting fence line to the north and fence corner at the NE corner of the SE ¼ of the SE ¼ of Section 11.

Witness corners are as follows:

- Nail & Disc in Wood Corner Post, S19°W – 34.56 feet
- Existing Steel Building SE Corner, N10°W – 92.45 feet
- Existing Steel Building SW Corner, N31°W – 103.56 feet
- 911 Address Post "07514", N21°W – 19.53 feet
- Nail & Disc in Wood Corner Post, N14°E – 51.73 feet

Contacts pertaining to this corner are as follows:

- Cass County Recorder's Office
- Cass County Surveyor's Office
- Cass County Engineer's Office
- MN DNR, Division of Lands and Minerals, Survey Section
- MN DOT District Surveys Office in Baxter

Section Corner observed by GPS  
Datum: Cass County South Coordinates  
Geodetic Position NAD 83 (1996 HARN Adj.)

N = 262249.923  
E = 447370.795