

Page 1 of 2 A000630904



A000630904

OFFICE OF THE COUNTY RECORDER
CASS COUNTY, MINNESOTA
CERTIFIED, FILED, AND/OR
RECORDED ON

5/18/2017 11:02:46 AM

AS DOC #: A000630904

PAGES: 2

REC FEES: 0.00

KATHRYN M. NORBY
CASS COUNTY RECORDER

BY SR Dep TX#: 138511

Twp 141 Rge 28 Index No. P.0-12.0

CERTIFICATE OF LOCATION OF GOVERNMENT CORNER

C-E 1/16 corner of Section 21, Township 141 N., Range 28 W., 5th P.M.
State of Minnesota, County of Cass

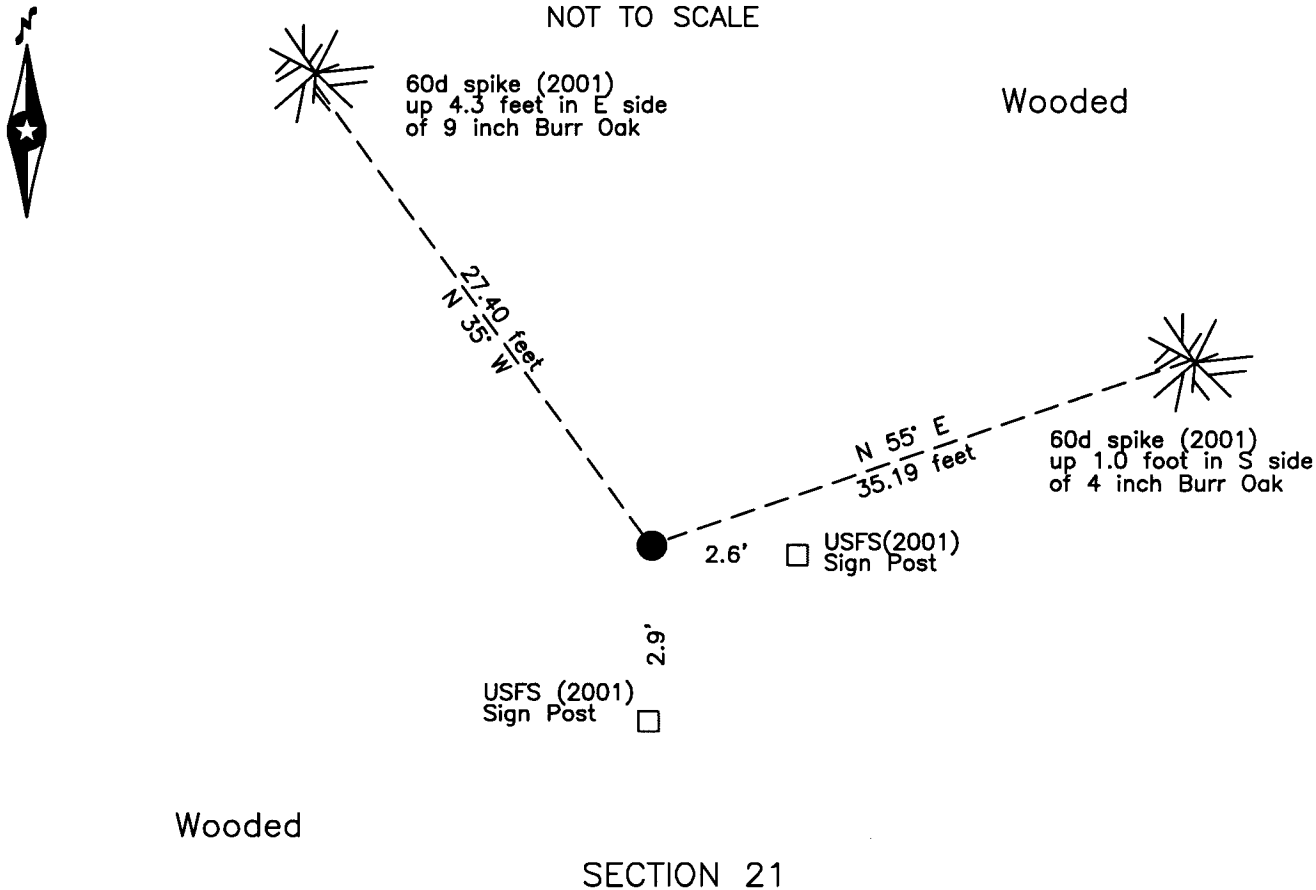
At the corner location shown on the sketch:

On 20 Dec 2016 found a 2 inch iron pipe with USFS brass cap, up 0.8 foot,
near the top of a ridge.

left monument as found lowered monument removed monument (explain)

On _____ placed _____

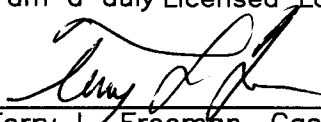
SKETCH OF REFERENCE TIES NOT TO SCALE



NOTE:
All bearings are true

Statement of evidence relative to this corner location is on the back of this page.

I hereby certify that this survey, plan or report was prepared by me or under my direct supervision and that I am a duly Licensed Land Surveyor under the laws of the State of Minnesota.


Terry L. Freeman, Cass County Surveyor
Date 5/17/17 MN License No. 21367



Index No. P.0-12.0

Statement of Evidence

Center East One-sixteenth corner of Section 21, Township 141 North, Range 28 West, 5th Principal Meridian.

Sept. 1918 E.G. Harrington, GLO, U.S. Cadastral Engineer, set a temp. wooden stake for the C.E. 1/16 cor. at a midpoint between the Center ¼ corner and East ¼ corner of section 21. No references are noted.
The above records are on file with the Minnesota Historical Society, St. Paul, Minnesota, copies are filed with the Cass County Highway Department, Surveyor's Office (CCHD/SO).

Feb. 2001 R. Main, technician, United States Department of Agriculture, Forest Service (USFS), Field Book Traverse, page 20, on file in the Cass Lake Office, indicates he set a spike for the subject corner midway and on line between the Center ¼ corner and East ¼ corner of section 21 and witnessed as follows:
11" W. Oak N 35° W 27.40 feet 4" W. Oak N 55° E 35.19 feet
Steel Sign Post South 3.0 feet Steel Sign Post East 2.7 feet

April 2005 R. Main, technician, USFS, Field Book #6, page 76, on file in the Cass Lake Office, indicates he set a Galvanized Steel Pipe 2 inch x 4 feet with 3 inch Brass cap up 0.8 foot, in place of spike, on northwest facing slope and notes the 2001 witnesses.

Dec. 2016 B. Hippen, technician, records of the CCHD/SO, found the USFS brass cap Monument, up 0.8 foot, in good condition and, witnessed as follows:
9" Burr Oak(2005) N 35° W 27.40 feet 4" Burr Oak(2005) N 55° E 35.19 feet
Steel Sign Post(2005) South 2.9 feet Steel Sign Post(2005) East 2.6 feet

The monument, recovered and established references for the position are shown on the face of this document.

Analysis of the recovered record data, field evidence and survey measurements, indicates that the monument recovered by the CCHD/SO in 2016 is the accepted location of this corner.

County Coordinates (Cass County North)

Northing 177329.15

Easting 496394.94