



A000630646

OFFICE OF THE COUNTY RECORDER
CASS COUNTY, MINNESOTA
CERTIFIED, FILED, AND/OR
RECORDED ON

5/10/2017 2:06:47 PM

AS DOC #: A000630646

PAGES: 2

REC FEES: 0.00

KATHRYN M. NORBY
CASS COUNTY RECORDER

BY KF Dep TX#: 138309

Page 1 of 2 A000630646

CERTIFICATE OF LOCATION OF GOVERNMENT CORNER

Index No. E.O - 23.0

N 1/4 Corner of Section 12, Township 136, Range 32, 5 P.M.

STATE OF MINNESOTA, County of CASS

At the corner location shown on the sketch:

On _____ found a _____
date

left monument as found, lowered monument, removed monument (explain)

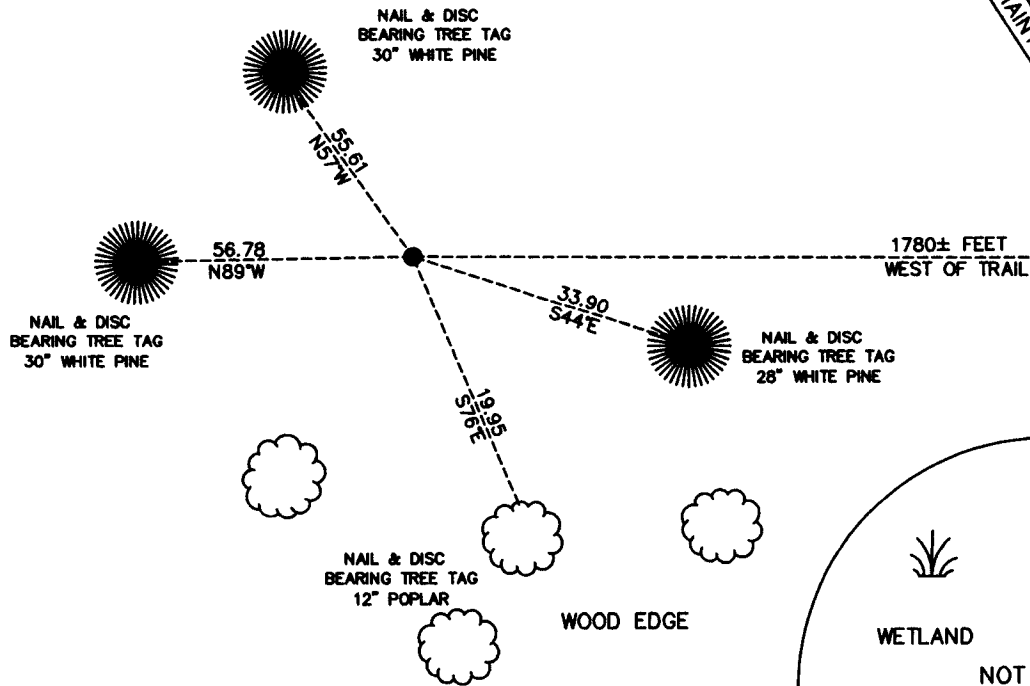
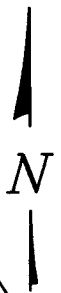
On March 21, 2017 placed a 5/8" PIPE EMBOSSED WITH CAP #45334 0.3' ABOVE THE GROUND
date

SKETCH OF REFERENCE TIES

CLEARED AREA

SECTION 12

MINIMUM MAINTENANCE ROAD



Statement of evidence relative to this corner location is on back of this page.

I hereby certify that this document was researched and prepared by me or under my direct supervision.

SIGNATURE *Kathryn M. Norby*

DATE 3-31-2017 Registration No. 45334

Title: Land Surveyor Professional Engineer County Surveyor County Engineer



E.0 – 23.0

The North Quarter Corner of Section 12, Township 136 North, Range 32 West of the Fifth Principal Meridian, Cass County, Minnesota, was established as part of the Original Public Land Survey during 1866. The Original Public Land Survey was done by Oscar Garrison, U.S. Deputy Surveyor. The Original monumentation was a set wood post to mark this corner position with bearing tree as follows:

30" White Pine S33°W – 19 links (12.54 feet)
22" Y. Pine N66°W – 29 links (19.14 feet)

Information on file in the MN Historical Society, St. Paul, MN. Copies in file in the Cass County Highway Dept. Surveyors Office (CCHD/SO).

On March 13, 2017 Survey Mapping Solutions, Inc. (SMS) survey crew searched for the corner and found nothing. Calculated a new position based on a lost position proportionately between NW and NE corners.

On March 24, 2017, a Survey Mapping Solutions, Inc. (SMS) survey crew set a 5/8" pipe with a cap stamped "RLS 45334" north of existing east – west trail 8 ± feet.

The recovered and established references for the position are shown on the face of this document. Analysis of the recovered data, field evidence and survey measurements, indicates that the monument set in 2017 by SMS is the correct perpetuation of this corner. Witness corners are as follows:

Nail & Disc and Bearing Tree Tag in 28" White Pine, S31°E – 43.88 feet
Nail & Disc and Bearing Tree Tag in 30" White Pine, N89°W – 56.78 feet
Nail & Disc and Bearing Tree Tag in 30" White Pine, N57°W – 55.61 feet
Nail & Disc and Bearing Tree Tag in 12" Poplar, S76°E – 19.15 feet

Contacts pertaining to this corner are as follows:

Cass County Recorder's Office
Cass County Surveyor's Office
Cass County Engineer's Office
MN DNR, Division of Lands and Minerals, Survey Section
MN DOT District Surveys Office in Baxter

Section Corner observed by GPS

Datum: Cass County South Coordinates
Geodetic Position NAD 83 (1996 HARN Adj.)

N = 267537.426
E = 449996.911