



A000630640

OFFICE OF THE COUNTY RECORDER  
CASS COUNTY, MINNESOTA  
CERTIFIED, FILED, AND/OR  
RECORDED ON

5/10/2017 2:06:41 PM

AS DOC #: A000630640

PAGES: 2

REC FEES: 0.00

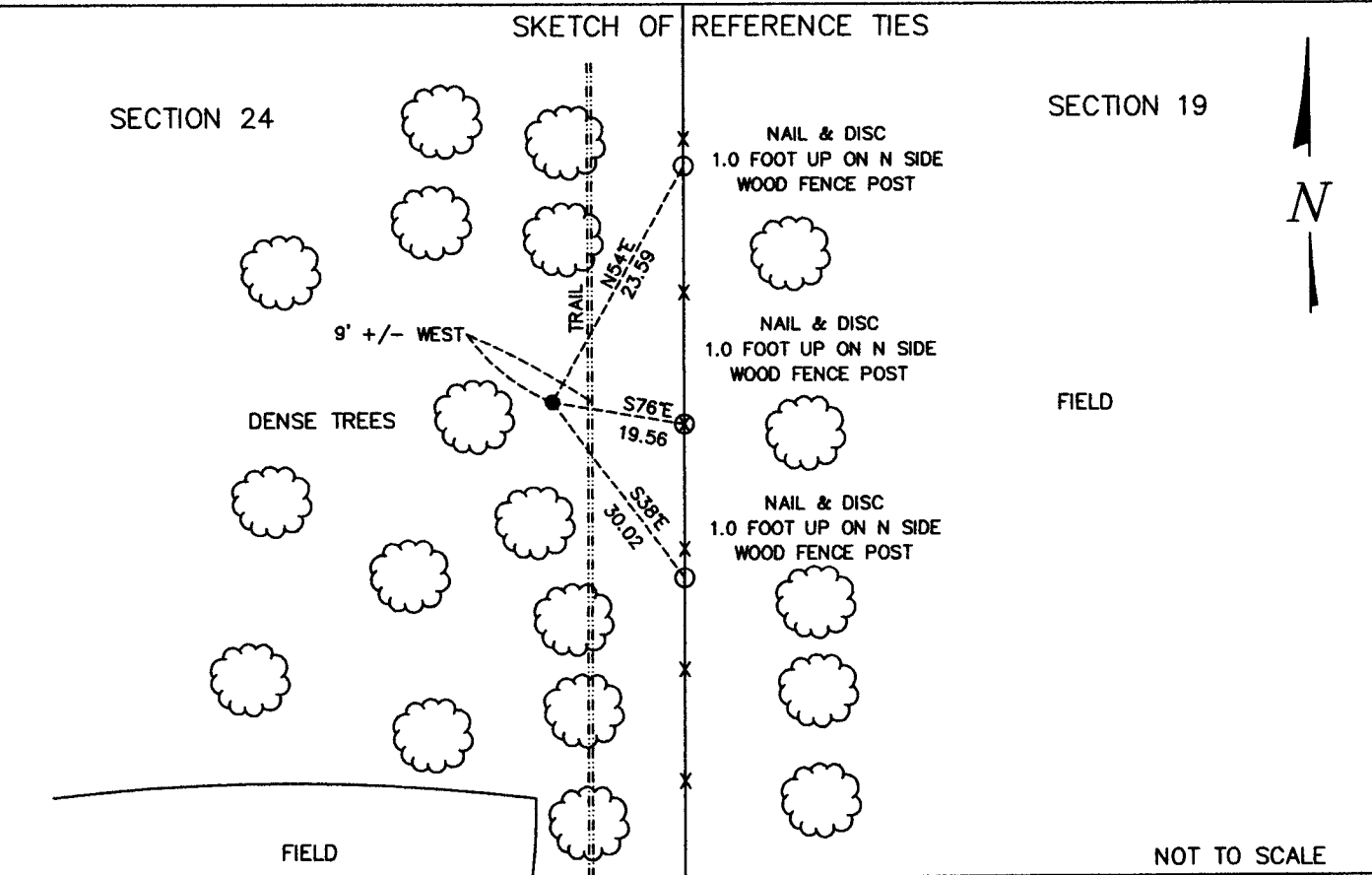
KATHRYN M. NORBY  
CASS COUNTY RECORDER

BY KF Dep TX#: 138309

Page 1 of 2 A000630640

**CERTIFICATE OF LOCATION OF GOVERNMENT CORNER** Index No. P.0 - 1.0

W 1/4 Corner of Section 19, Township 136, Range 32, 5 P.M.  
STATE OF MINNESOTA, County of CASS  
At the corner location shown on the sketch:  
 On MARCH 14, 2017 found a 1/2" IRON PIPE W/CAP STAMPED "RLS 13145" FLUSH WITH GROUND AND  
9' +/- WEST OF NORTH - SOUTH TRAIL AND WEST OF THE BARB WIRE FENCE LINE  
 left monument as found,  lowered monument,  removed monument (explain)  
 On \_\_\_\_\_ date placed a \_\_\_\_\_



Statement of evidence relative to this corner location is on back of this page.

I hereby certify that this document was researched and prepared by me or under my direct supervision.  
SIGNATURE Ross W. [Signature] DATE 3-31-2017 Registration No. 45334  
Title:  Land Surveyor  Professional Engineer  County Surveyor  County Engineer



P.0 – 1.0

The West Quarter Corner of Section 19, Township 136 North, Range 32 West of the Fifth Principal Meridian, Cass County, Minnesota, was established as part of the Original Public Land Survey during 1858. The Original Public Land Survey for the west line of 136-32 was done by H. Mellen, U.S. Deputy Surveyor. The Original monumentation was a set wood post to mark this corner position with bearing tree as follows:

16" W. Pine N39°E – 10 links (6.60 feet)

20" W. Pine S87°W – 34 links (22.44 feet)

Information on file in the MN Historical Society, St. Paul, MN. Copies in file in the Cass County Highway Dept. Surveyors Office (CCHD/SO).

August 17, 2007, M.H. Nyberg, LS 13145, conduct a survey in Section 24, Township 136, Range 33 where he set the E ¼ corner as a part of the survey for Charles Jasmer.

On March 14, 2017 Survey Mapping Solutions, Inc. (SMS) survey crew located ½" iron pipe with a plastic cap stamped "RLS 13145" flush with ground and 9.0' +/- West of the centerline of North – South trail.

The recovered and established references for the position are shown on the face of this document. Analysis of the recovered record data, field evidence and survey measurements, indicates that the monument set by M.H. Nyberg, LS 13145 is the correct perpetuation of this corner. Witness corners are as follows:

Nail & Disc in a wood fence post on North-South barbwire fence, N54°E – 23.59 feet

Nail & Disc in a wood fence post on North-South barbwire fence, S76°E – 19.56 feet

Nail & Disc in a wood fence post on North-South barbwire fence, S39°E – 30.02 feet

Contacts pertaining to this corner are as follows:

Cass County Recorder's Office

Cass County Surveyor's Office

Cass County Engineer's Office

MN DNR, Division of Lands and Minerals, Survey Section

MN DOT District Surveys Office in Baxter

Quarter Corner observed by GPS

Datum: Cass County South Coordinates

Geodetic Position NAD 83 (1996 HARN Adj.)

N = 254389.274

E = 421256.080