



A000630639

OFFICE OF THE COUNTY RECORDER
CASS COUNTY, MINNESOTA
CERTIFIED, FILED, AND/OR
RECORDED ON

5/10/2017 2:06:40 PM

AS DOC #: A000630639

PAGES: 2

REC FEES: 0.00

KATHRYN M. NORBY
CASS COUNTY RECORDER

BY KF Dep TX#: 138309

Page 1 of 2 A000630639

CERTIFICATE OF LOCATION OF GOVERNMENT CORNER

Index No. P.0 - 13.0

E 1/4 Corner of Section 21, Township 136, Range 31, 5 P.M.
STATE OF MINNESOTA, County of CASS

At the corner location shown on the sketch:

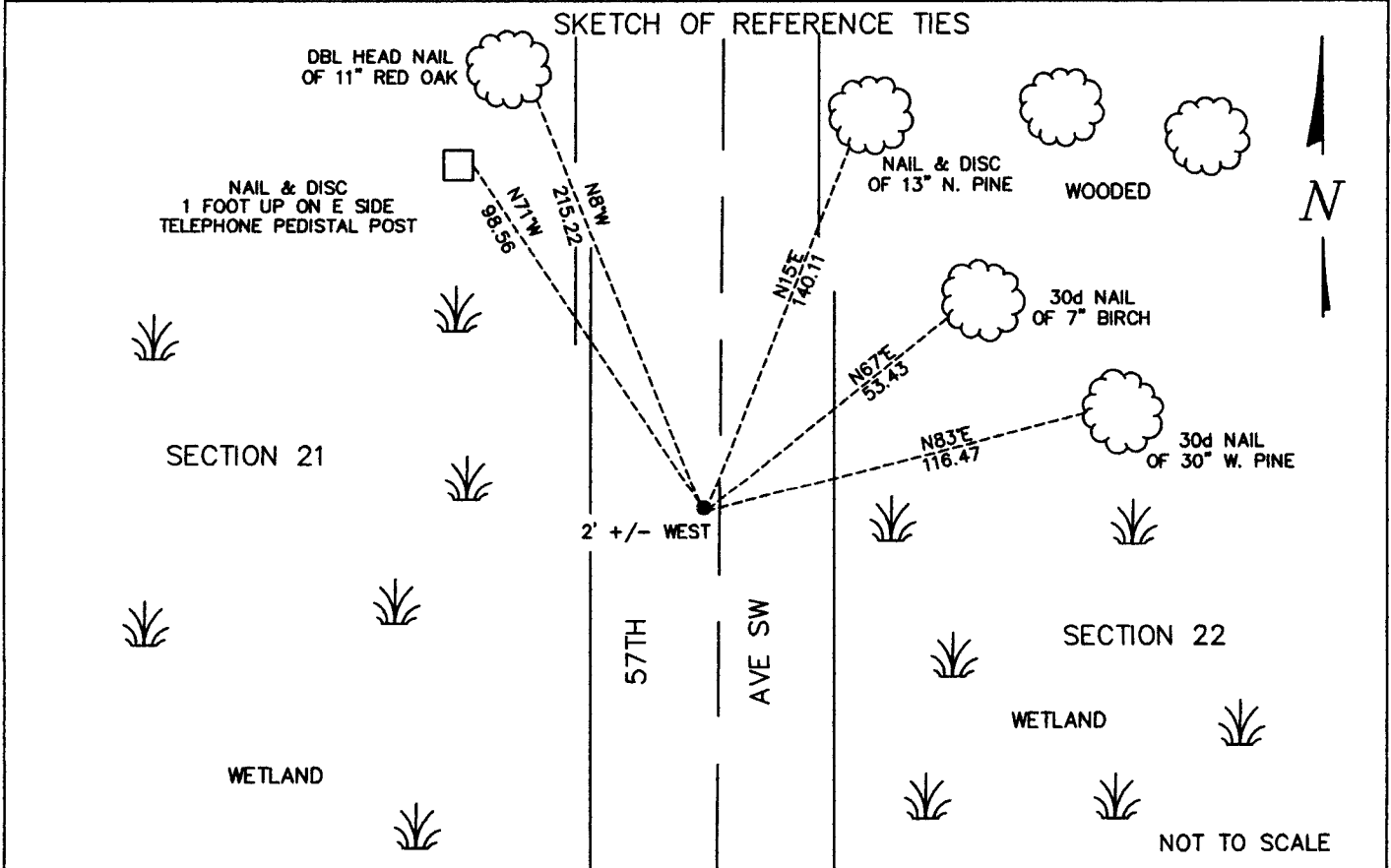
On MARCH 8, 2017 found a CAST IRON MONUMENT APPROXIMATELY 2' +/- WEST OF ROAD CENTERLINE
date

BEING 1.5' BENEATH SURFACE OF GRAVEL ROAD

left monument as found, lowered monument, removed monument (explain)

On _____ date placed a _____

SKETCH OF REFERENCE TIES



Statement of evidence relative to this corner location is on back of this page.

I hereby certify that this document was researched and prepared by me or under my direct supervision.

SIGNATURE *Ross W. Lane*

DATE 3-31-2017 Registration No. 45334

Title: Land Surveyor Professional Engineer County Surveyor County Engineer



P.0 – 13.0

The East Quarter Corner of Section 21, Township 136 North, Range 31 West of the Fifth Principal Meridian, Cass County, Minnesota, was established as part of the Original Public Land Survey during 1870. The Original Public Land Survey was done by Richard Cronk, U.S. Deputy Surveyor. The Original monumentation was a set wood post to mark this corner position with bearing tree as follows:

10" Tamarack S54°E – 28 links (18.48 feet)
7" Tamarack N13°W – 10 links (6.60 feet)

Information on file in the MN Historical Society, St. Paul, MN. Copies in file in the Cass County Highway Dept. Surveyors Office (CCHD/SO).

1913, John Curo resurveyed Moose Lake Township set a 2 ½" x 48" iron pipe in concrete proportionally. County Survey Record Book "B" page 12-28.
Information on file in CCHD/SO.

1986, David Landecker (#17008) set cast iron monument proportionally as done by Curo. Witness Corners as follows:

Nail & Blaze on 5" Poplar, N33°E – 59.80 feet
Nail & Blaze on 5" Birch, N67°E – 53.43 feet
Nail & Blaze on 30" White Pine, N83°E – 116.47 feet
Information on file in CCHD/SO and COLOGC in Doc. No. 297691.

May 1999, the CCSO found CIM, down 0.1' feet below the road surface, 2.0 west of centerline. Witness corners area as follows:

30d Nail in 7" Birch, N67°E – 53.43 feet
30d Nail in 30" White Pine, N83°E – 116.47 feet
Double head nail in 11" R. Oak, N8°W – 215.22 feet

On October 10, 2002, the CCSO found CIM, down 1.7' feet below the road surface, 2.0 West of centerline.
Information on file in CCHD/SO.

On March 9, 2017 Survey Mapping Solutions, Inc. (SMS) survey crew located CIM, down 1.5 foot below the road surface and 2.0' West of the centerline of 57th Avenue SW.

The recovered and established references for the position are shown on the face of this document. Analysis of the recovered record data, field evidence and survey measurements, indicates that the monument set by David Landecker (#17008) is the correct perpetuation of this corner. Also the position fits both Horst and Curo surveys. Witness corners area as follows:

30d Nail in 7" Birch, N67°E – 53.43 feet
30d Nail in 30" White Pine, N83°E – 116.47 feet
Double Head Nail in 11" R. Oak, N8°W – 215.22 feet
Nail & Disc in 13" R. Oak, N15°E – 140.11 feet
Nail & Disc in Telephone Pedestal Wood Support Post, N71°W – 98.56 feet

Contacts pertaining to this corner are as follows:
Cass County Recorder's Office
Cass County Surveyor's Office
Cass County Engineer's Office
MN DNR, Division of Lands and Minerals, Survey Section
MN DOT District Surveys Office in Baxter

Section Corner observed by GPS
Datum: Cass County South Coordinates
Geodetic Position NAD 83 (1996 HARN Adj.)

N = 254436.31
E = 470768.86