



A000628454

OFFICE OF THE COUNTY RECORDER  
CASS COUNTY, MINNESOTA  
CERTIFIED, FILED, AND/OR  
RECORDED ON

2/2/2017 10:35:20 AM

AS DOC #: A000628454

PAGES: 2

REC FEES: 0.00

KATHRYN M. NORBY  
CASS COUNTY RECORDER

BY SR \_\_\_\_\_ Dep TX#: 136433

Page 1 of 2 A000628454

### CERTIFICATE OF LOCATION OF GOVERNMENT CORNER

Index No. R.0 - 3.0

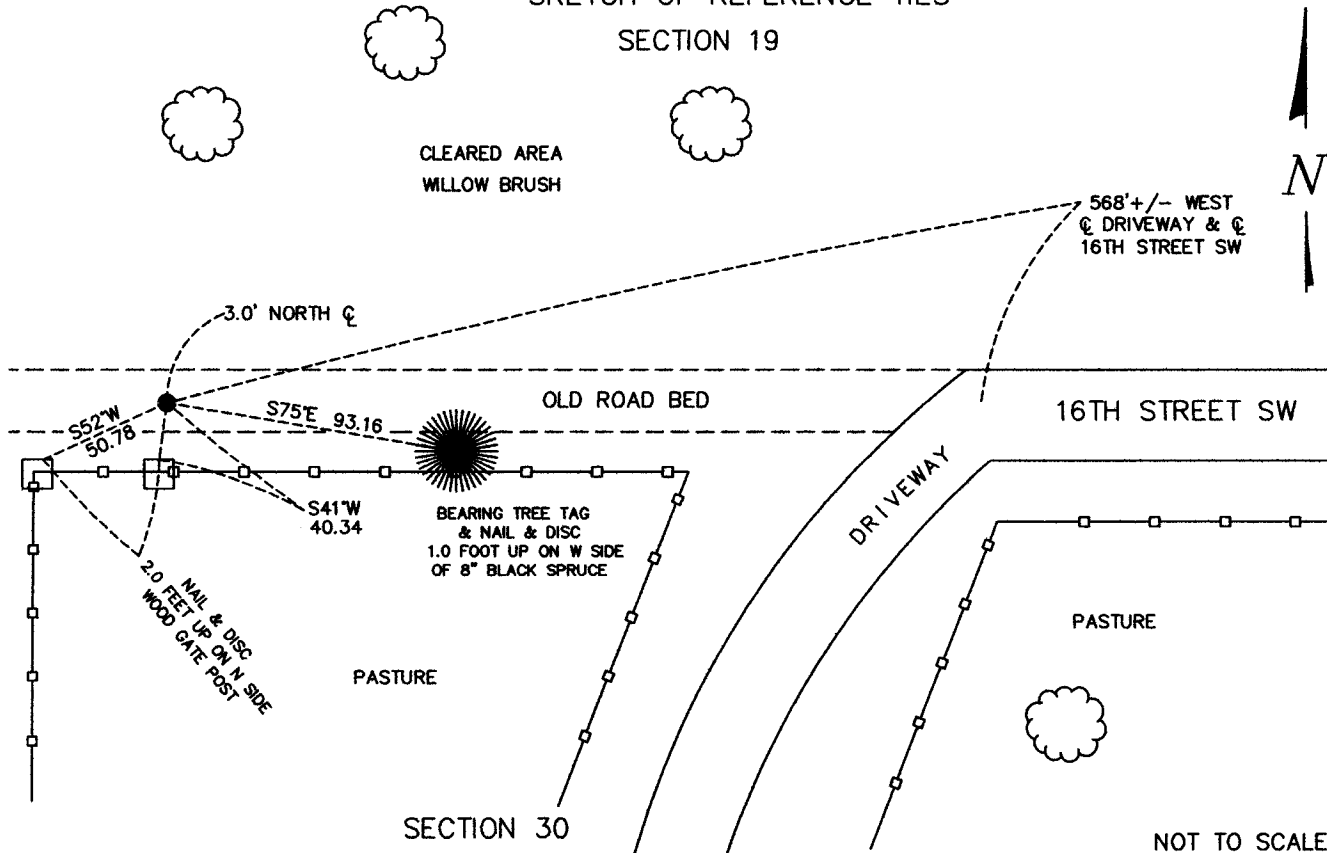
N 1/4 Corner of Section 30, Township 138, Range 32, 5 P.M.  
STATE OF MINNESOTA, County of CASS

At the corner location shown on the sketch:

- On DECEMBER 16, 2016 found a BROKEN OFF 8X8X36 CONCRETE POST 0.3' BELOW THE ROAD SURFACE & 3.0 NORTH  
OF OLD ROAD CENTERLINE. SET 5/8" PIPE WITH A YELLOW CAP EMBOSSED WITH "RLS 45334" NORTH SIDE OF MONUMENT
- left monument as found,  lowered monument,  removed monument (explain)
- On \_\_\_\_\_ placed a \_\_\_\_\_

#### SKETCH OF REFERENCE TIES

SECTION 19



NOT TO SCALE

Statement of evidence relative to this corner location is on back of this page.

I hereby certify that this document was researched and prepared by me or under my direct supervision.

SIGNATURE Kathryn M. Norby

DATE 1-27-2017 Registration No. 45334

Title:  Land Surveyor  Professional Engineer  County Surveyor  County Engineer



R.0 – 3.0

The North Quarter Corner of Section 30, Township 138 North, Range 32 West of the Fifth Principal Meridian, Cass County, Minnesota, was established as part of the Original Public Land Survey during 1870. The Original Public Land Survey was done by M. Black, U.S. Deputy Surveyor. The Original monumentation was a set wood post to mark this corner position with bearing tree as follows:

10" W. Pine N 72° E – 38 links ( 25.08 feet)  
13" N. Pine S 56° ½ E – 29 links ( 19.14 feet)

Information on file in the MN Historical Society, St. Paul, MN. Copies in file in the Cass County Highway Dept. Surveyors Office (CCHD/SO).

June 22, 1912, John Curo, Chris Wacks, W.J. Aldridge and Howard Melmo traveled to the ¼ corner between Section 19 and 30 where they placed found 8"x 8" x 36" cement post. The post was set from Gov't bearing tree - 10" white pine which stands Northeast located in County Survey Record Book "A" page 425 – 426, Curo Book 89 Page 06 and Curo Book 98 Page 99. Bearing trees as follows:

W. Pine 10" N 72° E – 38 links ( 25.08 feet)

In 1915, F. A. Donner found 8"x 8" x 36" cement post at the North Quarter corner of Section 30. Located in County Survey Record Book "B" page 583 - 584 and Curo Book 89 Page 3.

Information on file in CCHD/SO.

On December 16, 2016 a Survey Mapping Solutions, Inc. (SMS) survey crew searched the area and recovered broken off 8"x 8" x 36" concrete (cement) post 0.3' below the old east/west road bed. We placed a 5/8 inch pipe with a plastic cap embossed with (RLS 45353) was set to mark the corner on the North edge of the monument. The following ties were also made:

Set a 1 ½" Orange disc/Nail in wood corner fence post S52°W 50.78',  
Set a 1 ½" Orange disc/Nail in wood brace post S41° W 40.34'  
Set a 1 ½" Orange disc/Nail and bearing tree sign 8" Black Spruce S75°E 93.16'.  
Located 3.0' +/- north of the old east/west road bed.

The recovered and established references for the position are shown on the face of this document. Analysis of the recovered record data, field evidence and survey measurements, indicates that the monument recovered by SMS in 2016 is the correct perpetuation of this corner.

Contacts pertaining to this corner are as follows:

Cass County Recorder's Office  
Cass County Surveyor's Office  
Cass County Engineer's Office  
Westwood Professional Services  
MN DNR, Division of Lands and Minerals, Survey Section  
MN DOT District Surveys Office in Baxter

Section Corner observed by GPS  
Datum: Cass County South Coordinates  
Geodetic Position NAD 83 (1996 HARN Adj.)

N = 315110.134  
E = 422300.547