



A000628453

OFFICE OF THE COUNTY RECORDER  
CASS COUNTY, MINNESOTA  
CERTIFIED, FILED, AND/OR  
RECORDED ON

2/2/2017 10:35:19 AM

AS DOC #: A000628453

PAGES: 2

REC FEES: 0.00

KATHRYN M. NORBY  
CASS COUNTY RECORDER

BY SR \_\_\_\_\_ Dep TX#: 136433

Page 1 of 2 A000628453

### CERTIFICATE OF LOCATION OF GOVERNMENT CORNER

Index No. R.0 - 1.0

NW Corner of Section 30, Township 138, Range 32, 5 P.M.  
STATE OF MINNESOTA, County of CASS

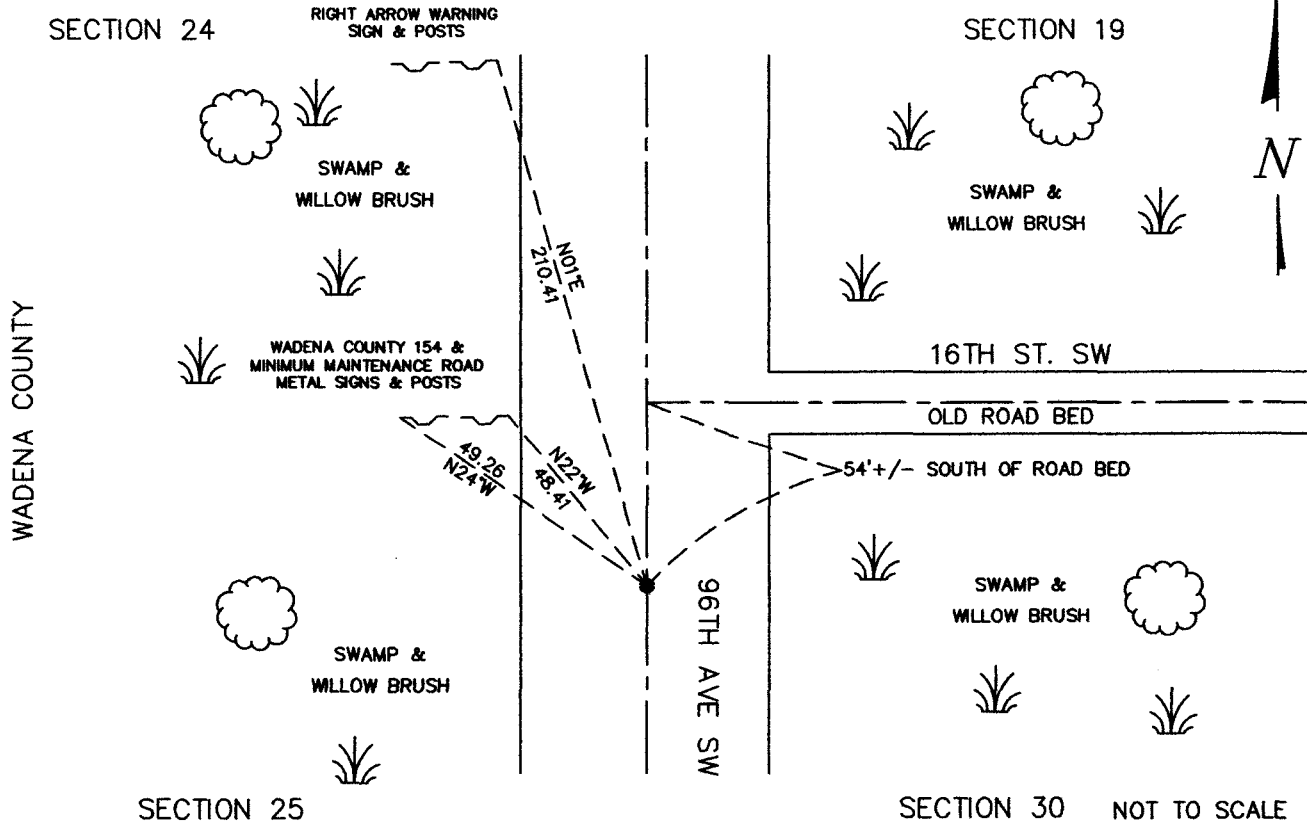
At the corner location shown on the sketch:

On OCTOBER 13, 2015 found a 1 1/2" SOLID IRON 0.5' BELOW & 54' SOUTH OF OLD ROAD BED RUNNING EAST  
date  
ALSO KNOWN AS 16TH STREET SW WESTERLY EXTENSION.

left monument as found,  lowered monument,  removed monument (explain)

On \_\_\_\_\_ placed a \_\_\_\_\_  
date

#### SKETCH OF REFERENCE TIES



Statement of evidence relative to this corner location is on back of this page.

I hereby certify that this document was researched and prepared by me or under my direct supervision.

SIGNATURE Ross Wane

DATE 1-27-2017 Registration No. 45334

Title:  Land Surveyor  Professional Engineer  County Surveyor  County Engineer



R.0 – 1.0

The Northwest Corner of Section 30, Township 138 North, Range 32 West of the Fifth Principal Meridian, Cass County, Minnesota, was established as part of the Original Public Land Survey during 1860. The Original Public Land Survey was done by J. W. Myers, U.S. Deputy Surveyor. The Original monumentation was a set wood post to mark this corner position with bearing tree as follows:

6" Tamarac S79°E – 198 links ( 130.68 feet)

4" Tamarac S3°W – 242 links ( 159.72 feet)

Information on file in the MN Historical Society, St. Paul, MN. Copies in file in the Cass County Highway Dept. Surveyors Office (CCHD/SO).

In 1915, F. A. Donner, County Survey Record Book "B" page 584, found Gov't bearing tree S3°W down. Also in Curo Book 89 Page 13.

In 1919 J. H. Flynn, County Survey Record Book "C" page 196 found the original bearing tree SE and set 2 ½"x36" I.M.

Information on file in CCHD/SO.

On August 3, 1940 M. Lilliboe, M. Coche, and I. J. Moore (Hubbard County Staff) found a wood stake with ¾" iron pin on the North side of stake. According to corner card No. 21 data from Wadena County Highway Dept. Engineers Office (WCHD/EO) and Hubbard County Notice of Land Corner - Number 35.

Wadena County Highway Dept. Engineers Office established three accessories:

Fence Post N 40.3 feet.

8" Jack Pine SW 59.4 feet.

5" Jack Pine SE 84.9 feet

Copies in file in the Wadena County Highway Dept. Engineers Office (WCHD/EO).

On October 13, 2016 a Survey Mapping Solutions, Inc. (SMS) survey crew searched the area and recovered the 1 ½" solid iron, 0.5' below the road surface. The following ties were also made:

Located east edge, 1.0 foot up of the east leg of the two 'U' post on a Minimum Maintenance Road - N 21° W 48.41'.

Located west edge, 1.0 foot up of the west leg of the two 'U' post on a Minimum Maintenance Road - N 24° W 49.26'.

Located east edge, 1.0 foot up of the east leg of the two 'U' post on a Right Arrow Warning sign - N 1° E 210.41'.

Measured the centerline of an old road bed traveling east approximately 54 feet north of the found corner and 2 feet west of the centerline of 96th Avenue SW.

The recovered and established references for the position are shown on the face of this document. Analysis of the recovered record data, field evidence and survey measurements, indicates that the monument recovered by SMS in 2016 is the correct perpetuation of this corner.

Contacts pertaining to this corner are as follows:

Cass County Recorder's Office

Cass County Surveyor's Office

Cass County Engineer's Office

Wadena County Engineer's Office

MN DNR, Division of Lands and Minerals, Survey Section

MN DOT District Surveys Office in Baxter

Section Corner observed by GPS

Datum: Cass County South Coordinates

Geodetic Position NAD 83 (1996 HARN Adj.)

N = 315135.810

E = 419720.583