



A000628452

OFFICE OF THE COUNTY RECORDER
CASS COUNTY, MINNESOTA
CERTIFIED, FILED, AND/OR
RECORDED ON

2/2/2017 10:35:18 AM

AS DOC #: A000628452

PAGES: 2

REC FEES: 0.00

KATHRYN M. NORBY
CASS COUNTY RECORDER

BY SR Dep TX#: 136433

Page 1 of 2 A000628452

CERTIFICATE OF LOCATION OF GOVERNMENT CORNER

Index No. P.0 - 5.0

E 1/4 Corner of Section 19, Township 138, Range 32, 5 P.M.
STATE OF MINNESOTA, County of CASS

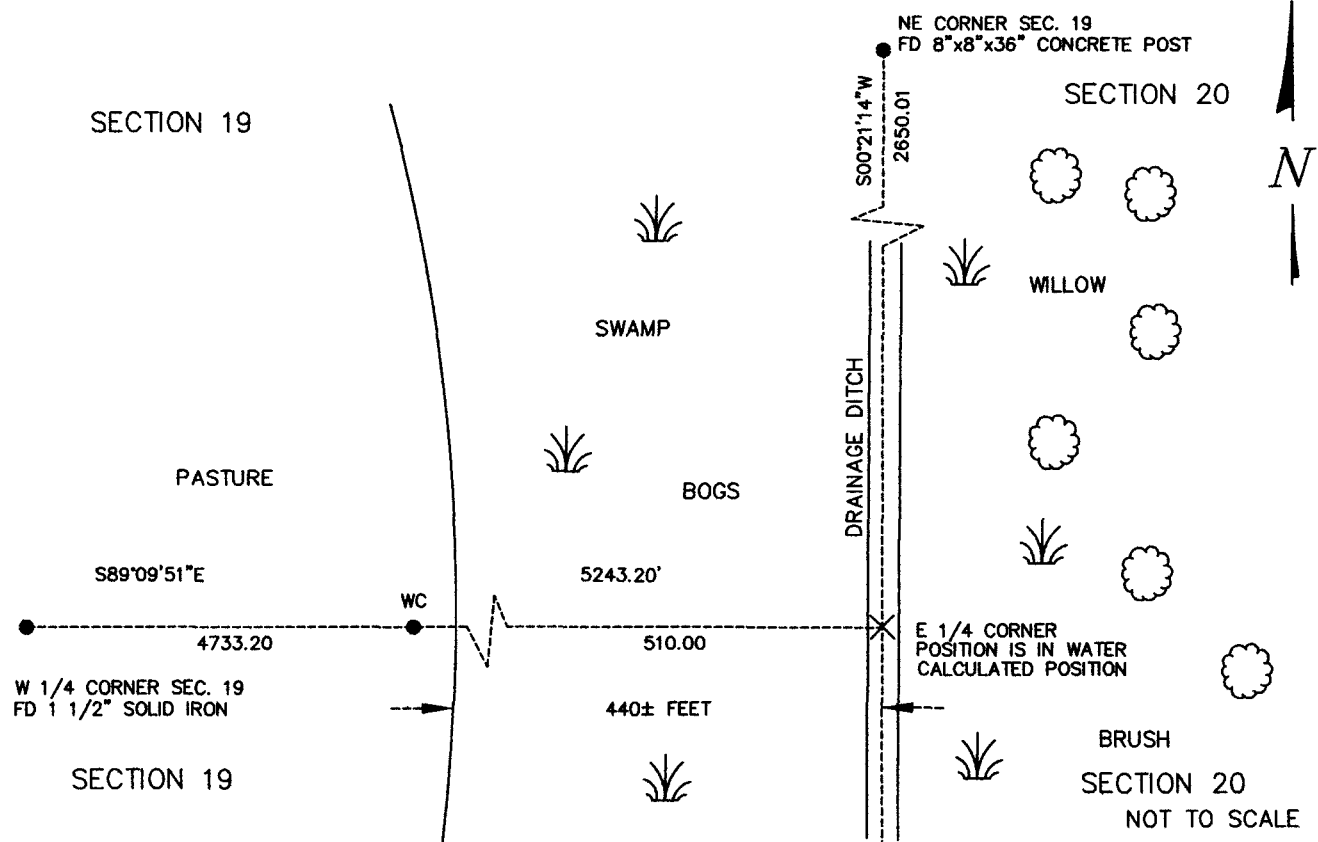
At the corner location shown on the sketch:

On December 29, 2016 found a NO MONUMENT FOUND OR SET DUE TO DRAINAGE DITCH.
date

left monument as found, lowered monument, removed monument (explain)

On _____ placed a _____
date

SKETCH OF REFERENCE TIES



Statement of evidence relative to this corner location is on back of this page.

I hereby certify that this document was researched and prepared by me or under my direct supervision.

SIGNATURE Ross M. Wone

DATE 1-27-2017 Registration No. 45334

Title: Land Surveyor Professional Engineer County Surveyor County Engineer



P.0 – 5.0

The East Quarter Corner of Section 19, Township 138 North, Range 32 West of the Fifth Principal Meridian, Cass County, Minnesota, was established as part of the Original Public Land Survey during 1870. The Original Public Land Survey was done by M. Black, U.S. Deputy Surveyor. The Original monumentation was a set wood post to mark this corner position with bearing tree as follows:

5" Tamarack S 31°E – 8 links (5.28 feet)

5" Tamarack N 88 1/2°W – 6 links (3.96 feet)

Information on file in the MN Historical Society, St. Paul, MN. Copies in file in the Cass County Highway Dept. Surveyors Office (CCHD/SO).

On December 29, 2016 a Survey Mapping Solutions, Inc. (SMS) survey crew searched the area and found nothing. This corners was computed using a lost position. The corner falls into the existing north/south drainage ditch.

The recovered and established references for the position are shown on the face of this document. Analysis of the recovered record data, field evidence and survey measurements, indicates that the position calculated by SMS in 2016 is the correct perpetuation of this corner.

Contacts pertaining to this corner are as follows:

Cass County Recorder's Office

Cass County Surveyor's Office

Cass County Engineer's Office

MN DNR, Division of Lands and Minerals, Survey Section

MN DOT District Surveys Office in Baxter

Section Corner Only Calculated - Not Set

Datum: Cass County South Coordinates

Geodetic Position NAD 83 (1996 HARN Adj.)

N = 317705.339

E = 424978.487