



A000628450

OFFICE OF THE COUNTY RECORDER  
CASS COUNTY, MINNESOTA  
CERTIFIED, FILED, AND/OR  
RECORDED ON

2/2/2017 10:35:16 AM

AS DOC #: A000628450

PAGES: 2

REC FEES: 0.00

KATHRYN M. NORBY  
CASS COUNTY RECORDER

BY SR Dep TX#: 136433

Page 1 of 2 A000628450

### CERTIFICATE OF LOCATION OF GOVERNMENT CORNER

Index No. N.0 - 5.0

NE Corner of Section 19, Township 138, Range 32, 5 P.M.  
STATE OF MINNESOTA, County of CASS

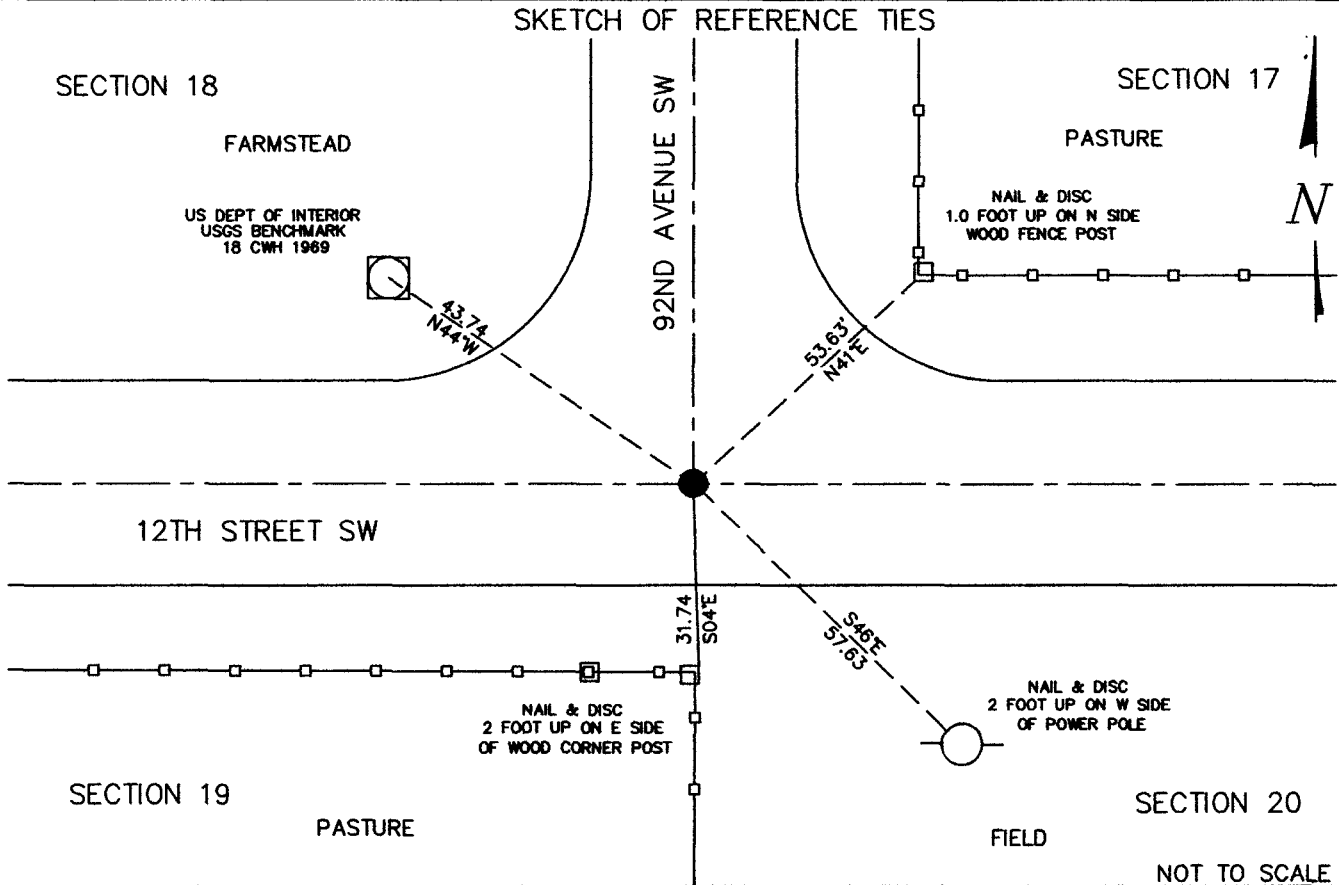
At the corner location shown on the sketch:

On DECEMBER 16, 2017 found a 8" x 8" x 36" CONCRETE POST DOWN 1.4 FEET BELOW ROAD SURFACE AND PLACED  
A LARGE LANDSCAPE SPIKE ON THE NORTH EDGE OF MONUMENT.

left monument as found,  lowered monument,  removed monument (explain)

On \_\_\_\_\_ date placed a \_\_\_\_\_

#### SKETCH OF REFERENCE TIES



Statement of evidence relative to this corner location is on back of this page.

I hereby certify that this document was researched and prepared by me or under my direct supervision.

SIGNATURE Ross Wane

DATE 1/27/2017 Registration No. 45334

Title:  Land Surveyor  Professional Engineer  County Surveyor  County Engineer



N.0 – 5.0

The Northeast Corner of Section 19, Township 138 North, Range 32 West of the Fifth Principal Meridian, Cass County, Minnesota, was established as part of the Original Public Land Survey during 1870. The Original Public Land Survey was done by M. Black, U.S. Deputy Surveyor. The Original monumentation was a set wood post to mark this corner position with bearing tree as follows:

- 11" B. Pine S9°W – 29 links ( 19.14 feet)
- 18" N. Pine N 56 1/2°E – 71 links ( 46.86 feet)
- 14" B. Pine S 52°E – 90 links ( 59.40 feet)
- 12" B. Pine N 38°W – 54 links ( 35.64 feet)

Information on file in the MN Historical Society, St. Paul, MN. Copies in file in the Cass County Highway Dept. Surveyors Office (CCHD/SO).

On Dec. 10, 1907 John Curo resurveyed parts of McKinley Township, where he was traversing to the corner common to Sections 17, 18, 19 & 20. They found two bearing trees of SE and NW, the roots of the SW and NE bearing trees from which they set a wood post.

On Nov. 01, 1910 Harry S. Todd found the wood stake set by Curo and removed the solid oak plug and set 8"x 8" x 36" cement post proportionally. County Survey Record Book "A" page 118-119.

On Jan. 29, 1915 F. A. Donner found 8"x 8" x 36" cement post proportionally. County Survey Record Book "B" page 583 and Curo Bk 89 Pg. 4.

On May 16, 1944 Curo found 8"x 8" x 36" cement post 1.0 foot below the road. Curo Book "B" page 22-29.

On Oct. 26, 1948 Harold Curo found 8"x 8" x 36" cement post 1.0 foot below the road. County Survey Record Book "D" page 372-373. Ties 10" J. Pine N56°E – 19.14 feet, 12" J. Pine N50°W – 53.75 feet, 7" J. Pine N27°W – 40.85 feet & 13" J. Pine S47°E – 85.28 feet.  
Information on file in CCHD/SO.

On December 16, 2016 a Survey Mapping Solutions, Inc. (SMS) survey crew searched the area and recovered the 8"x 8" x 36" concrete (cement) post 1.4 feet below the road surface. We placed a large landscape spike on the North edge of the monument. The following ties were also made: Found and located USGS Benchmark "18 CWH 1969" N 44° W 43.74', set a 1 1/2" orange disc/nail in wood corner fence post N 41° E 53.63', set a 1 1/2" orange disc/nail in power pole S 46° E 57.63' and set a 1 1/2" orange disc/nail in wood corner fence post S 04° E 31.74'. Located at intersection of 12<sup>th</sup> Street SW and 92<sup>nd</sup> Avenue SW.

The recovered and established references for the position are shown on the face of this document. Analysis of the recovered record data, field evidence and survey measurements, indicates that the monument recovered by SMS in 2016 is the correct perpetuation of this corner.

Contacts pertaining to this corner are as follows:

- Cass County Recorder's Office
- Cass County Surveyor's Office
- Cass County Engineer's Office
- Westwood Professional Services
- MN DNR, Division of Lands and Minerals, Survey Section
- MN DOT District Surveys Office in Baxter

Section Corner observed by GPS

Datum: Cass County South Coordinates

Geodetic Position NAD 83 (1996 HARN Adj.)

N = 320355.294

E = 424994.860