



A000628449

OFFICE OF THE COUNTY RECORDER  
CASS COUNTY, MINNESOTA  
CERTIFIED, FILED, AND/OR  
RECORDED ON

2/2/2017 10:35:15 AM

AS DOC #: A000628449

PAGES: 2

REC FEES: 0.00

KATHRYN M. NORBY  
CASS COUNTY RECORDER

BY SR Dep TX#: 136433

Page 1 of 2 A000628449

### CERTIFICATE OF LOCATION OF GOVERNMENT CORNER

Index No. N.0 - 3.0

N 1/4 Corner of Section 19, Township 138, Range 32, 5 P.M.

STATE OF MINNESOTA, County of CASS

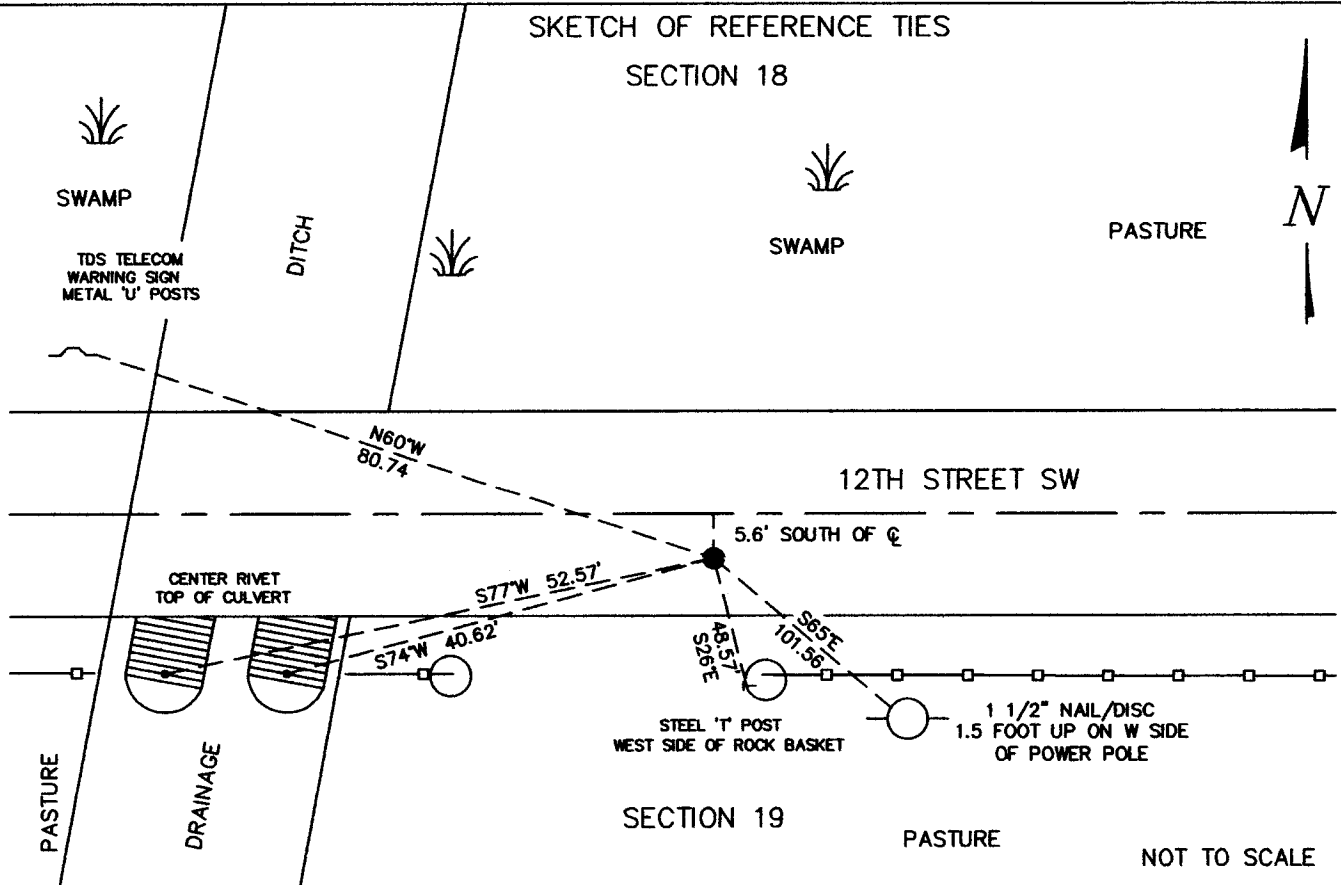
At the corner location shown on the sketch:

On \_\_\_\_\_ found a \_\_\_\_\_  
date

left monument as found,  lowered monument,  removed monument (explain)

On JANUARY 10, 2017 placed a 5/8" PIPE WITH PLASTIC CAP EMBOSSED WITH "RLS 45334" 0.3' BELOW ROAD SURFACE  
date

#### SKETCH OF REFERENCE TIES SECTION 18



Statement of evidence relative to this corner location is on back of this page.

I hereby certify that this document was researched and prepared by me or under my direct supervision.

SIGNATURE Ross Williams

DATE 1-27-2017 Registration No. 45334

Title:  Land Surveyor  Professional Engineer  County Surveyor  County Engineer



N.0 – 3.0

The North Quarter Corner of Section 19, Township 138 North, Range 32 West of the Fifth Principal Meridian, Cass County, Minnesota, was established as part of the Original Public Land Survey during 1870. The Original Public Land Survey was done by M. Black, U.S. Deputy Surveyor. The Original monumentation was a set wood post to mark this corner position with bearing tree as follows:

- 11" Tamarac N85°W – 460 links ( 303.6 feet)
- 12" Tamarac S58°E – 141 links ( 93.06 feet)

Information on file in the MN Historical Society, St. Paul, MN. Copies in file in the Cass County Highway Dept. Surveyors Office (CCHD/SO).

On December 19, 2016 a Survey Mapping Solutions, Inc. (SMS) survey crew searched the area and survey crew searched the area and found nothing.

On January 10, 2017 we set a 5/8 inch pipe with a plastic cap embossed with (RLS 45353) was set to at the lost, proportional position mark the corner 0.3 below the road surface. Located 5.6' +/- south of the centerline of 12th Street NW. The following ties were made:

- Locate East edge of an TDS Telecom Warning sign U post on North side of 12<sup>th</sup> Street SW - N 60° W 80.74'
- Locate top center rivet on an West culvert of the twin 48" CMP culverts on the South side of 12th Street SW - S 77° W 52.57'
- Locate top center rivet on an East culvert of the twin 48" CMP culverts on the South side of 12th Street SW - S 74° W 40.62'
- Set a 1 1/2" Orange disc/Nail up one foot up on power pole on the South side of 12th Street SW - S 65° E 101.56'
- Locate West edge of an 'T' fence post of rock corner basket on South side of 12th Street SW - S 26° E 48.57'

The recovered and established references for the position are shown on the face of this document. Analysis of the recovered record data, field evidence and survey measurements, indicates that the monument set by SMS in 2016 is the correct perpetuation of this corner.

- Contacts pertaining to this corner are as follows:
- Cass County Recorder's Office
- Cass County Surveyor's Office
- Cass County Engineer's Office
- MN DNR, Division of Lands and Minerals, Survey Section
- MN DOT District Surveys Office in Baxter

Section Corner observed by GPS  
Datum: Cass County South Coordinates  
Geodetic Position NAD 83 (1996 HARN Adj.)

N = 320387.703  
E = 422349.869