



A000628251

OFFICE OF THE COUNTY RECORDER
CASS COUNTY, MINNESOTA
CERTIFIED, FILED, AND/OR
RECORDED ON

1/26/2017 11:03:49 AM

AS DOC #: A000628251

PAGES: 2

REC FEES: 0.00

KATHRYN M. NORBY
CASS COUNTY RECORDER

BY SR _____ Dep TX#: 136281

Page 1 of 2 A000628251

Twp 139 Rge 28 Index No. C.0-09.0

CERTIFICATE OF LOCATION OF GOVERNMENT CORNER

East Quarter corner of Section 5, Township 139 N., Range 28 W., 5th P.M.

State of Minnesota, County of Cass

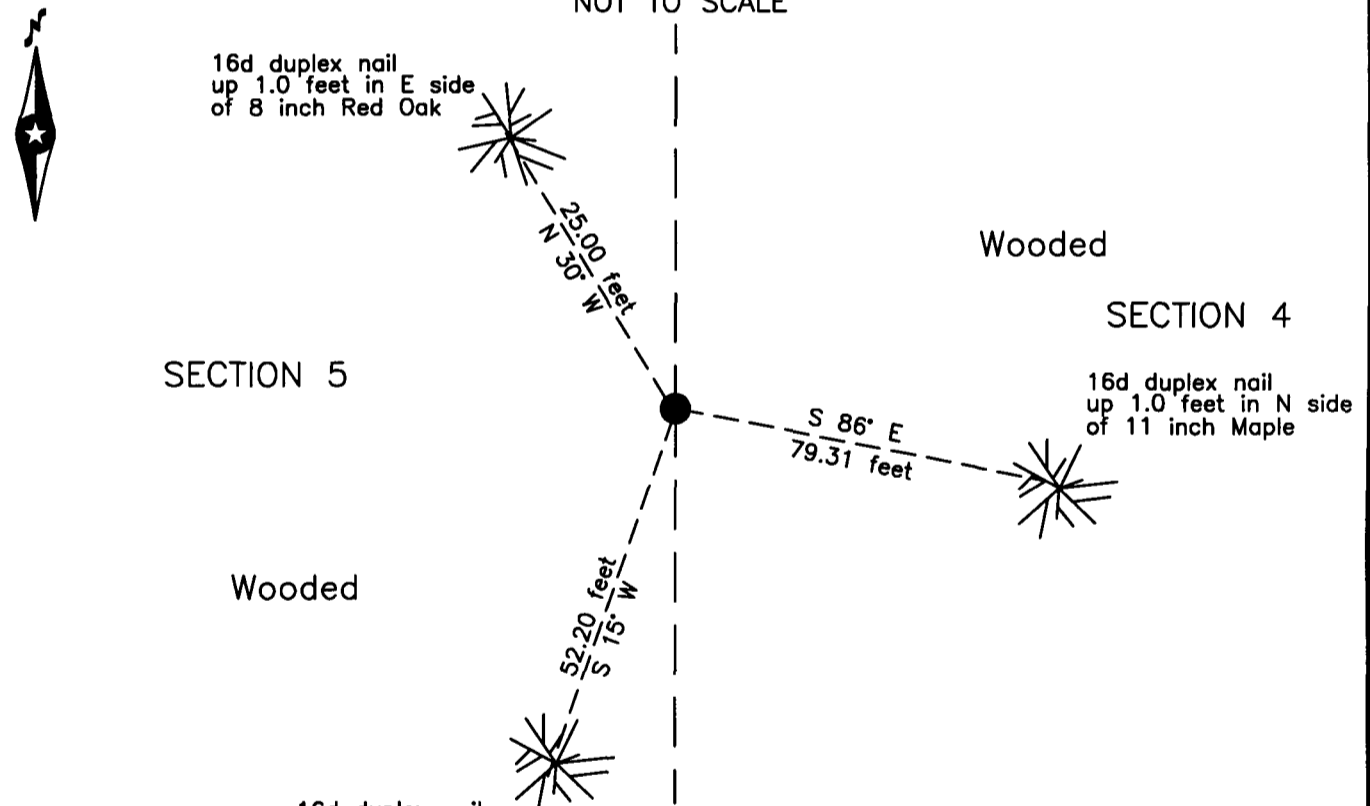
At the corner location shown on the sketch:

On 9 Feb. 2000 found _____ a 2 inch ODIP, up 1.8 feet

left monument as found lowered monument removed monument (explain)

On _____ placed _____

SKETCH OF REFERENCE TIES
NOT TO SCALE



NOTE:
All bearings are true

Statement of evidence relative to this corner location is on the back of this page.

I hereby certify that this survey, plan or report was prepared by me or under my direct supervision and that I am a duly Licensed Land Surveyor under the laws of the State of Minnesota.

Terry L. Freeman, Cass County Surveyor

Date 1/25/17 MN License No. 21367



Index No. C.0-09.0

Statement of Evidence

East Quarter corner of Section 5, Township 139 North, Range 28 West, 5th Principal Meridian.

April 1864 Johnson and Thornton, General Land Office Deputy Surveyors, notes for the subdivision of Township 139 North, Range 28 West, set a post for the original corner and referenced it as follows:

24" Y. Pine S 88°E 25 links (16.50 feet) 7" W. Birch N 38°W 18 links (11.88 feet)

The above record is on file with the Minnesota Historical Society in St. Paul, Minnesota, copies are filed with the Cass County Highway Department, Surveyor's Office (CCHD/SO).

Nov. 1919 B. Clark, LS 231, Survey Record No. 434, Book C, page 328, on file in the CCHD/SO, states "Set an iron post 4 ft. long 2 1/2 in. D. drove the same in ground 2 ft."

Dec. 1921 B. Clark, LS 231, County Resurvey, on file in the Cass County Recorders Office, as Document Number 69799, indicates Iron Monument.

Feb. 2000 B. Hippen and C. Loe, technicians, records of the CCHD/SO, found 2 inch outside diameter iron pipe, up 1.8 feet, top slightly mushroomed, in fair condition and witnessed as follows:

8" Red Oak N 30° W 25.00 feet 11" Maple S 86° E 79.31 feet

10" Maple S 15° W 52.20 feet

Jan. 2017 K. Dahlman, resource manager, Cass County Land Department, records of the CCHD/SO, found 2 inch outside diameter iron pipe and 2000 witnesses in good condition.

The monument, recovered and established references for the position are shown on the face of this document.

Analysis of the recovered record data, field evidence and survey measurements, indicates that the monument recovered by CCHD/SO in 2000 is the accepted location of this corner.

County Coordinates (Cass County North)

Northing 129418.85

Easting 494944.35