



**A000627558**  
**OFFICE OF THE COUNTY RECORDER**  
**CASS COUNTY, MINNESOTA**  
**CERTIFIED, FILED, AND/OR**  
**RECORDED ON**  
 12/29/2016 12:56:36 PM  
**AS DOC #: A000627558**  
**PAGES: 2**  
**REC FEES: 0.00**  
**KATHRYN M. NORBY**  
**CASS COUNTY RECORDER**  
 BY SR Dep TX#: 135698

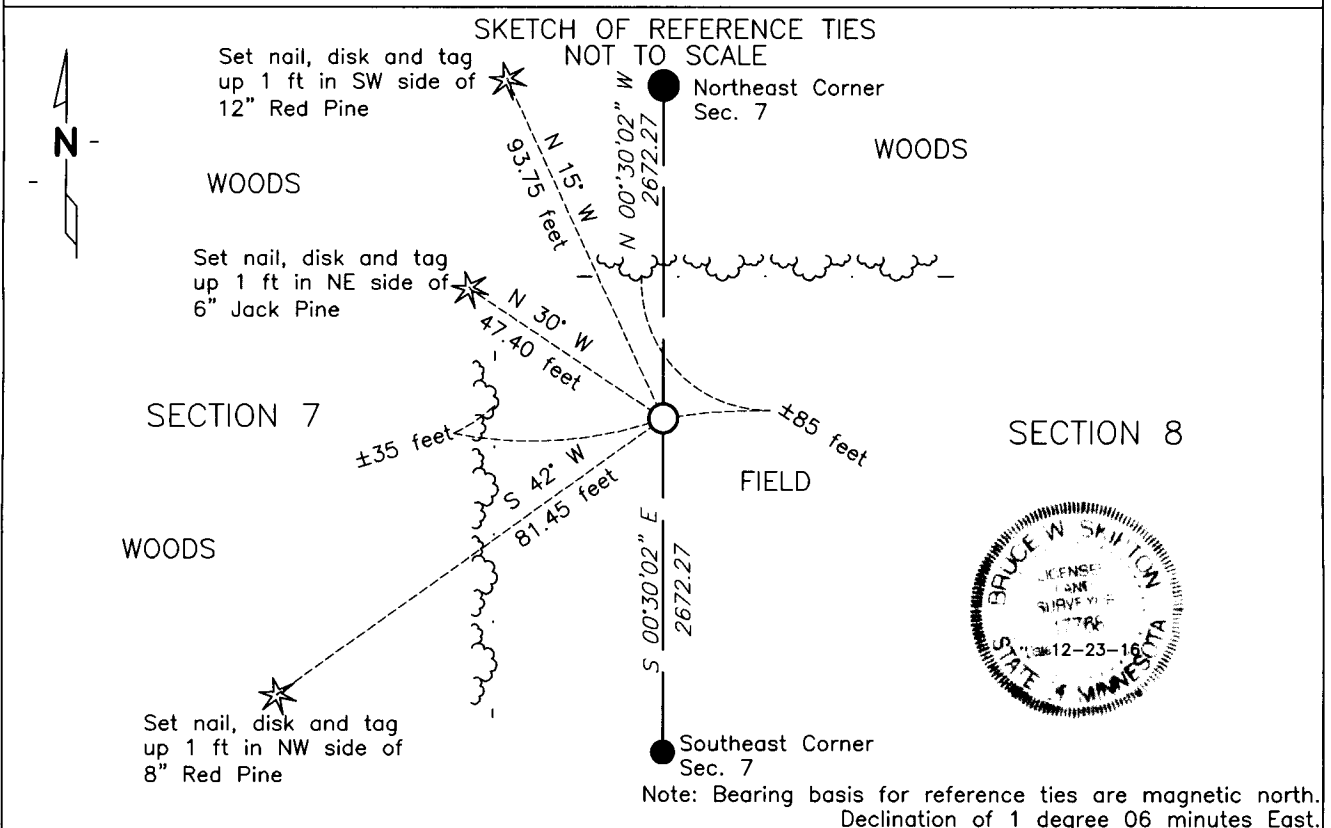
Index No. G.0-5.0

**CERTIFICATE OF LOCATION OF GOVERNMENT CORNER**

EAST QUARTER Corner of Section 7, Township 137 N., Range 30 W., 5th P.M.  
 STATE OF MINNESOTA, County of CASS

At the corner location shown on the sketch:

- On 10-19-16 found No evidence of post or it's accessories
- left monument as found,  lowered monument,  removed monument (explain)
- On 12-08-16 Set a 1/2 inch by 18 inch Iron Pipe, RLS#17768  
DATE



NAD83 (1996 ADJUSTMENT)  
 CASS COUNTY SOUTH DATUM

N= 297004.098  
 E= 488060.293

Statement of evidence relative to this corner is on back of page

I hereby certify that this document and the data contained herein was prepared by me or under my direct supervision.

Bruce W. Skipton 12-23-16  
 BRUCE W. SKIPTON DATE

Registration No. 17768

Land surveyor,  
 County Surveyor,



Index No. G.0-5.0

**Statement of Evidence:**

**East Quarter corner Section 7, Township 137 North, Range 30 West, 5<sup>th</sup> Principal Meridian.**

October 1870 Richard Cronk, General Land Office (GLO) Deputy Surveyor, notes for the subdivision of Township 137 North, Range 30 West, set a post for the original corner and referenced it as follows:

7" White Pine S 56 ½ degrees W 13 links (8.6 feet)

8" Jack Pine N 77 degrees E 16 links (10.6 feet)

The above record is on file with the Minnesota Historical Society in St. Paul, Minnesota, copies are filed with the Cass County Highway Department, Surveyors Office (CCHD/SO).

October 2016 Bolton & Menk's field crew found no evidence of East Quarter corner or its accessories. This PLSS corner was determined to be lost and it was perpetuated using the single proportion method between the Northeast and Southeast corners of Section 7. Reference ties established for the position are shown on the face of this document (Page 1 of 2).