



A000627556
OFFICE OF THE COUNTY RECORDER
CASS COUNTY, MINNESOTA
CERTIFIED, FILED, AND/OR
RECORDED ON
 12/29/2016 12:56:34 PM
 AS DOC #: A000627556
 PAGES: 2
 REC FEES: 0.00
KATHRYN M. NORBY
CASS COUNTY RECORDER
 BY SR _____ Dep TX#: 135698

Index No. E.0-5.0

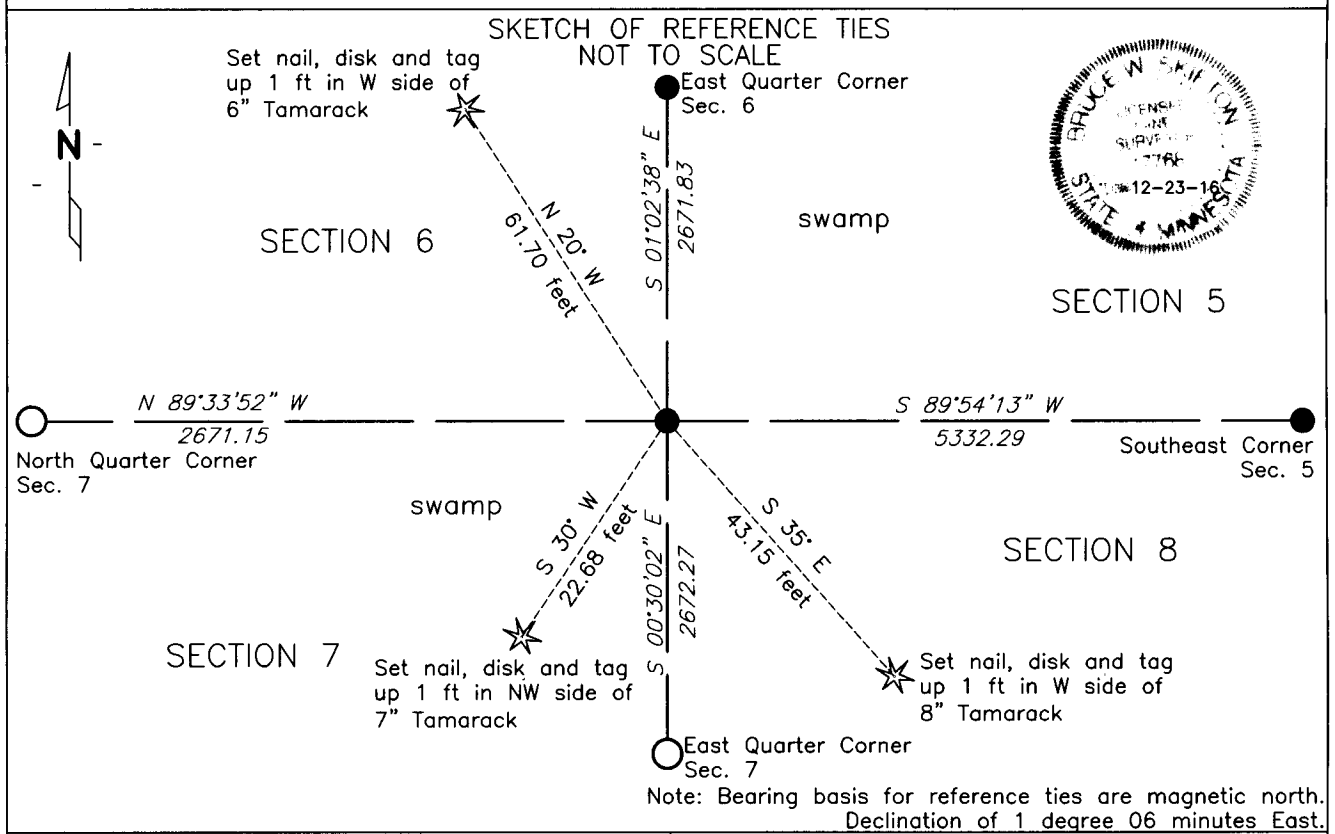
CERTIFICATE OF LOCATION OF GOVERNMENT CORNER

NORTHEAST Corner of Section 7, Township 137 N., Range 30 W., 5th P.M.

STATE OF MINNESOTA, County of CASS

At the corner location shown on the sketch:

- On 10-17-16 found 5/8 inch rebar in willow swamp
- left monument as found, lowered monument, removed monument (explain)
- On _____ DATE _____



NAD83 (1996 ADJUSTMENT)
 CASS COUNTY SOUTH DATUM

N= 299676.266
 E= 488036.953

Statement of evidence relative to this corner is on back of page

I hereby certify that this document and the data contained herein was prepared by me or under my direct supervision.

Bruce W. Skipton 12-23-16
 BRUCE W. SKIPTON DATE

Registration No. 17768

- Land surveyor,
- County Surveyor,



Index No. E.0-5.0

Statement of Evidence:

Northeast corner Section 7, Township 137 North, Range 30 West, 5th Principal Meridian.

October 1870 Richard Cronk, General Land Office (GLO) Deputy Surveyor, notes for the subdivision of Township 137 North, Range 30 West, set a post for the original corner and referenced it as follows:

12" Dead Tamarac	S 70 degrees W	100 links (66 feet)
10" Dead Tamarac	N 80 degrees W	90 links (59.4 feet)
8" Dead Tamarac	N 02 degrees E	103 links (67.9 feet)

The above record is on file with the Minnesota Historical Society in St. Paul, Minnesota, copies are filed with the Cass County Highway Department, Surveyors Office (CCHD/SO).

June 2009 Chris Hogle, LS 43932, unrecorded Certificate of Location of Government Corner was found in CCHD/SO file 2008.061, set an 5/8" x 3' Rebar at double proportionate measurement between the southwest corner of Section 6 and the southeast corner of Section 5 and the northeast corner of Section 6 and the southeast corner of Section 7.

E1/4 of 6	N01°02'42"W	2672.45 feet
SW of 6	N89°33'42"W	5327.01 feet
SE of 5	N89°53'59"E	5332.22 feet
SE of 7	S00°30'05"E	5344.21 feet

October 2016 Bolton and Menk's field crews found a 5/8 inch rebar at the location for this corner. After further analysis of the recovered record data, field evidence and survey measurements, the 5/8 inch rebar fits the Lost Position of the double proportionate measurement between the southwest corner of Section 6 and the southeast corner of Section 5 and the northeast corner of Section 6 and the southeast corner of Section 7 and is accepted as the location for this USPLSS corner. Reference ties established for the position are shown on the face of this document (Page 1 of 2).