



A000627550

OFFICE OF THE COUNTY RECORDER
CASS COUNTY, MINNESOTA
CERTIFIED, FILED, AND/OR
RECORDED ON

12/29/2016 12:56:28 PM

AS DOC #: A000627550

PAGES: 2

REC FEES: 0.00

KATHRYN M. NORBY
CASS COUNTY RECORDER

BY SR Dep TX#: 135698

Page 1 of 2 A000627550

Index No. A.0-3.0

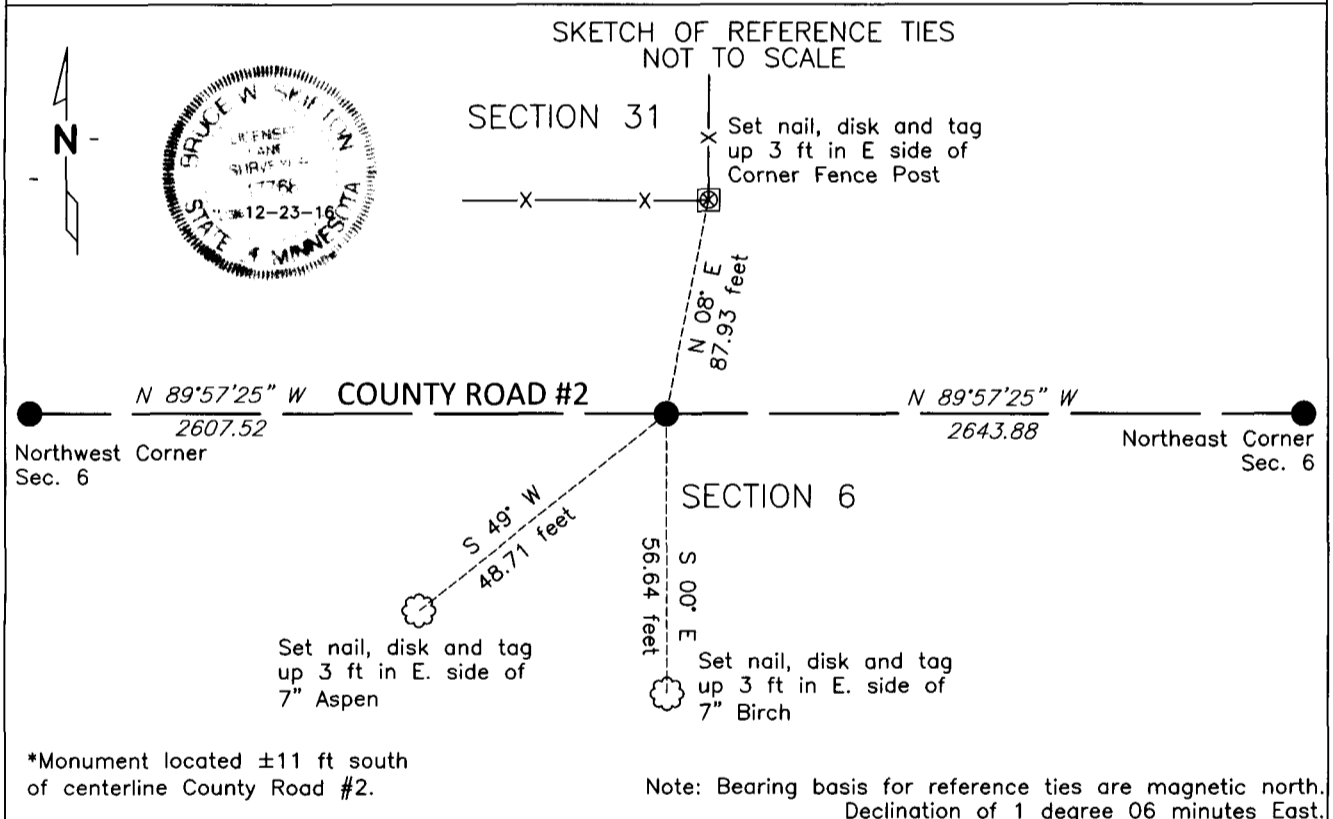
CERTIFICATE OF LOCATION OF GOVERNMENT CORNER

NORTH QUARTER Corner of Section 6, Township 137 N., Range 30 W., 5th P.M.

STATE OF MINNESOTA, County of CASS

At the corner location shown on the sketch:

- On 12-8-16 found PK Nail 0.4 feet north of south fog line on County Road #2.
- left monument as found, lowered monument, removed monument (explain)
- On _____ DATE _____



NAD83 (1996 ADJUSTMENT)
CASS COUNTY SOUTH DATUM

N= 305016.570
E= 485295.813

Statement of evidence relative to this corner is on back of page

I hereby certify that this document and the data contained herein was prepared by me or under my direct supervision.

Bruce W. Skipton 12-23-16
BRUCE W. SKIPTON DATE

Registration No. 17768

- Land surveyor,
- County Surveyor,



Index No. A.0-3.0

Statement of Evidence:

North Quarter corner Section 6, Township 137 North, Range 30, West, 5th Principal Meridian.

August 1865 George Wright and Thomas Walker, General Land Office (GLO) Deputy Surveyors, notes for the survey of Township 137 North and 138 North, Range 30 West, set a post for the original corner and referenced it as follows:

5" Aspen N 12 degrees E 48 links (31.7 feet)

9" Blk Pine S 75 degrees W 43 links (28.4 feet)

The above record is on file with the Minnesota Historical Society in St. Paul, Minnesota, copies are filed with the Cass County Highway Department, Surveyors Office (CCHD/SO).

January 1909 John Curo LS 1428, measured the north line of Section 6 according to Curo Book 85, page 127 and Survey Record No. 158, Book A page 333 and 334 on file in the CCHS/SO. The post and bearing trees were not found. The plat drawn in Survey Book A, page 340 on file in the CCHS/SO shows a distance of 5260.48 on the north line of Section 6. This distance also appears on Certificate of Survey 4553 (no date)

October 2016 Bolton & Menk's field crew found a mag nail 11 feet south of the road centerline at location for this corner. The above found mag nail position fits the Lost Position of the proportionate measurement between the Northeast and Northwest corners of Section 6. The measurement to the northwest corner of Section 6 is 2607.52 feet and to the northeast corner of Section 6 is 2643.88 feet. After further analysis of the recovered record data, field evidence and survey measurements, the found mag nail is accepted as the location for this USPLSS corner. Reference ties established for the position are shown on the face of this document (Page 1 of 2).