



A000627518

OFFICE OF THE COUNTY RECORDER
CASS COUNTY, MINNESOTA
CERTIFIED, FILED, AND/OR
RECORDED ON

12/29/2016 10:36:47 AM

AS DOC #: A000627518

PAGES: 2

REC FEES: 0.00

KATHRYN M. NORBY
CASS COUNTY RECORDER

BY SR _____ Dep TX#: 135683

Page 1 of 2
A000627518

Index No. C.0-17.0

CERTIFICATE OF LOCATION OF GOVERNMENT CORNER

EAST QUARTER Corner of Section 3, Township 137 N., Range 30 W., 5th P.M.

STATE OF MINNESOTA, County of CASS

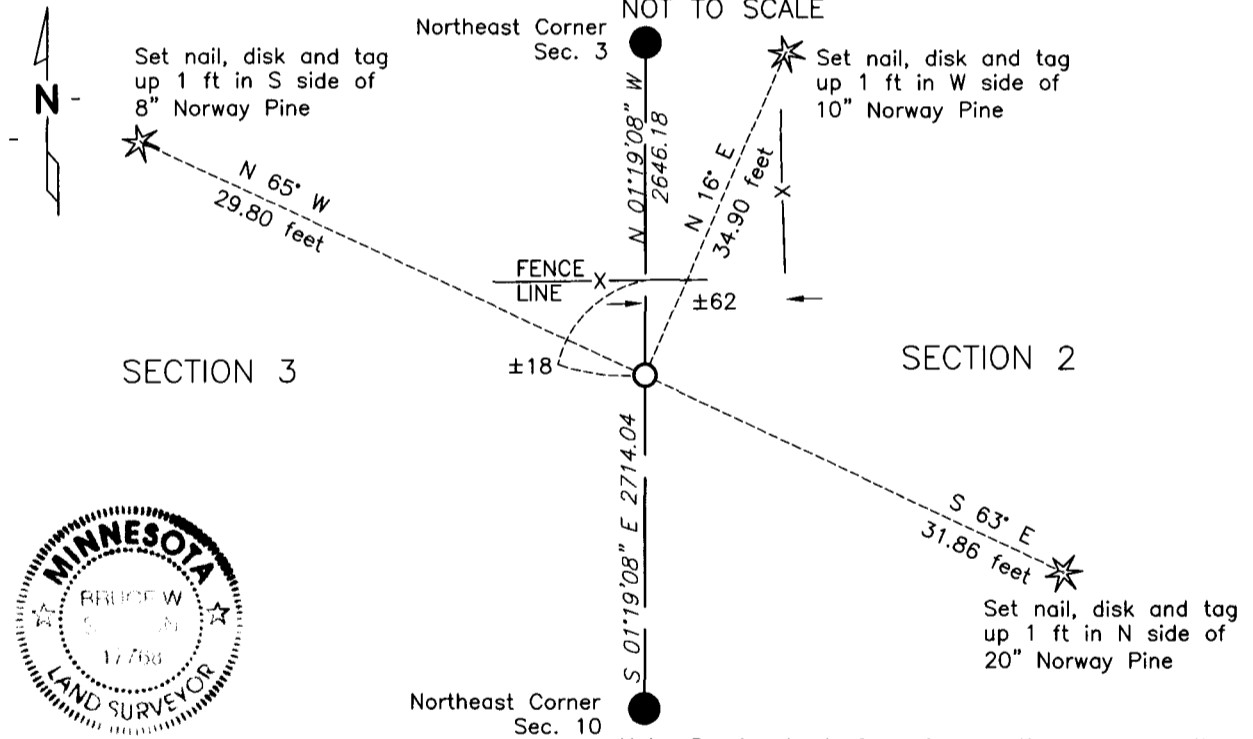
At the corner location shown on the sketch:

On _____ found _____

left monument as found, lowered monument, removed monument (explain)

On 10-27-16 Set 1/2 inch by 18 inch iron pipe marked RLS#17768
DATE

SKETCH OF REFERENCE TIES NOT TO SCALE



Note: Bearing basis for reference ties are magnetic north.
Declination of 1 degree 06 minutes East.

NAD83 (1996 ADJUSTMENT)
CASS COUNTY SOUTH DATUM

N= 302373.237
E= 503861.468

Statement of evidence relative to
this corner is on back of page

I hereby certify that this document and the
data contained herein was prepared by me or
under my direct supervision.

Bruce W. Skipton 12-14-16
BRUCE W. SKIPTON DATE

Registration No. 17768

Land surveyor,
 County Surveyor,



Index No. C.O-17.0

Statement of Evidence:

East Quarter corner Section 3, Township 137 North, Range 30 West, 5th Principal Meridian.

October 1870 Richard Cronk, General Land Office (GLO) Deputy Surveyor, notes for the subdivision of Township 137 North, Range 30 West, set a post for the original corner and referenced it as follows:

18" White Pine	N 70 degrees E	71 links (46.86 feet)
16" Norway Pine	N 14 degrees W	30 links (19.80 feet)

The above record is on file with the Minnesota Historical Society in St. Paul, Minnesota, copies are filed with the Cass County Highway Department, Surveyors Office (CCHD/SO).

December 1898 James M. Canfield, County Surveyor, Cass Road Calendar A, page 79, and Cass Road Auditor Book B, page 20, on file at CCHD/SO, indicates a distance of 170 rods 10 links ((2811.60 feet (Bolton and Menk measured 2714.04 feet)) from the West Quarter corner of Section 2 to the Southwest Corner of Section 2.

August 1912 A.W Moulster, Ditch Notes Shelf 1, Book 011, pages 9-11, on file at CCHD/SO, a found corner in swamp. Records ditch stationing of 2631.90 feet (Bolton and Menk measured 2714.04 feet) to the Southeast Corner of Section 3.

October 2016 Bolton & Menk's field crew found no evidence of East Quarter corner or its accessories. This PLSS corner was determined to be lost and it was perpetuated using the single proportion method between the Northeast and Southeast corners of Section 3. See below for measurements. Reference ties established for the position are shown on the face of this document (Page 1 of 2).

