



A000627355

OFFICE OF THE COUNTY RECORDER
CASS COUNTY, MINNESOTA
CERTIFIED, FILED, AND/OR
RECORDED ON

12/22/2016 11:46:06 AM

AS DOC #: A000627355

PAGES: 2

REC FEES: 0.00

KATHRYN M. NORBY
CASS COUNTY RECORDER

BY MW Dep TX#: 135555

Twp 140 Rge 25 Index No. C.0-21.0

CERTIFICATE OF LOCATION OF GOVERNMENT CORNER

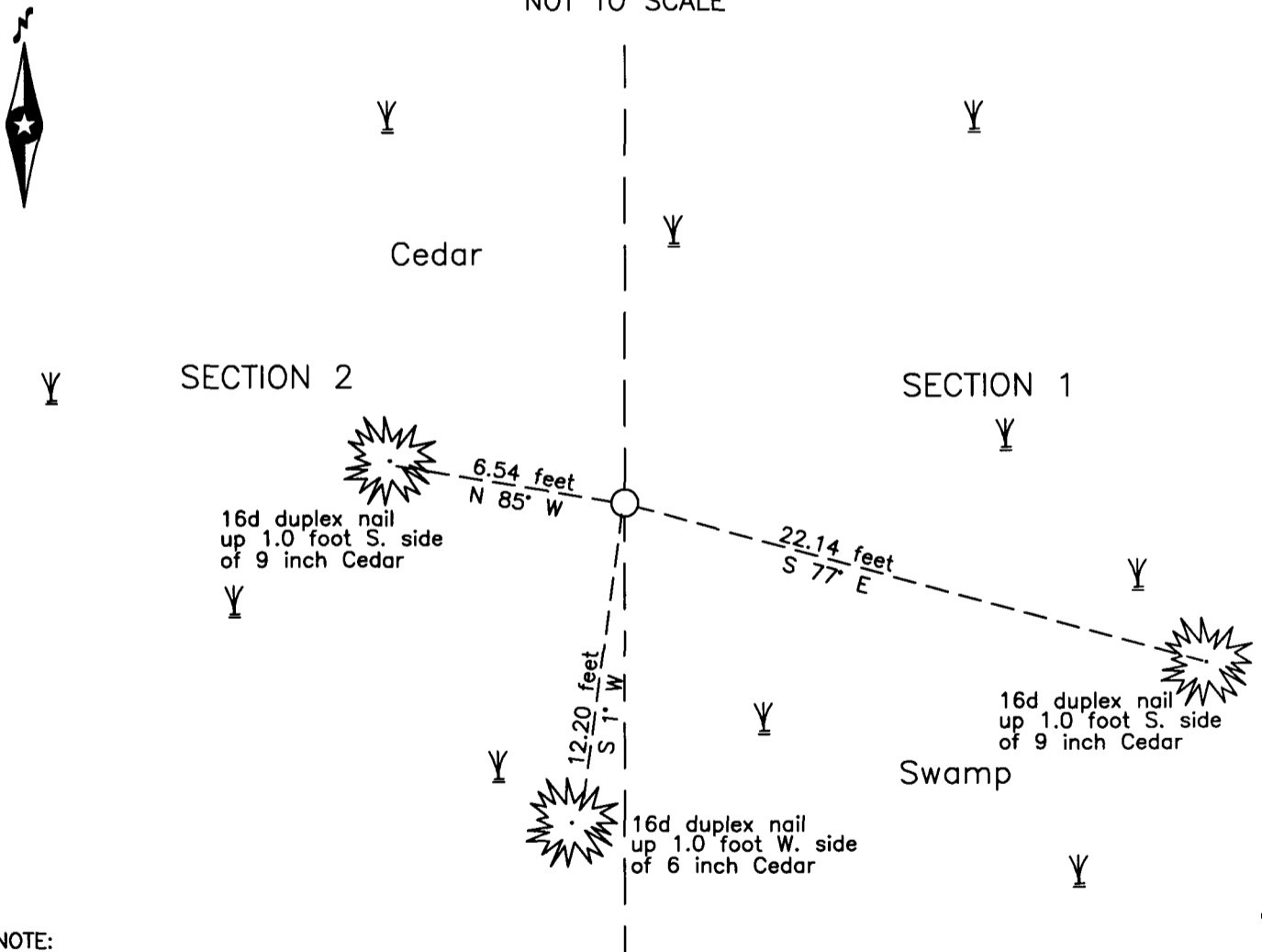
East Quarter corner of Section 2, Township 140 N., Range 25 W., 5th P.M.
State of Minnesota, County of Cass

At the corner location shown on the sketch:

On _____ found _____

left monument as found lowered monument removed monument (explain)
On 27 Oct 2016 placed a 1.25 inch outside diameter iron pipe, capped RLS 21367,
up 1.0 foot in Cedar swamp.

SKETCH OF REFERENCE TIES
NOT TO SCALE



NOTE:
All bearings are true

Statement of evidence relative to this corner location is on the back of this page.

I hereby certify that this survey, plan or report was prepared by me or under my direct supervision and that I am a duly Licensed Land Surveyor under the laws of the State of Minnesota.

Terry L. Freeman, Cass County Surveyor
Date 12/21/16 MN License No. 21367





Index No. C.0-21.0

Statement of Evidence

East Quarter corner Section 2, Township 140 North, Range 25 West, 5th Principal Meridian.

Oct. O.E. Garrison, General Land Office (GLO) Deputy Surveyor in the notes of the subdivision of Township 140 North, 1865 Range 25 West, set a post for the original corner and referenced it as follows:
5" W Cedar S 39 1/2° W 12 links (7.92 feet) 5" W. Cedar S 21° E 15 links (9.90 feet)
Said records are on file with the Minnesota Historical Society, St. Paul, Minnesota, copies are filed with the Cass County Highway Department, Surveyor's Office (CCHD/SO).

Oct. B. Hippen, technician, records of the CCHD/SO, set a 1.25 inch outside diameter iron pipe, up 1.0 foot at the 2016 prorata position between the recovered northeast corner of Section 11 and the reestablished northeast corner of Section 2 and witnessed as follows:
9" Cedar N 85° W 6.54 feet 9" Cedar S 77° E 22.14 feet
6" Cedar S 1° W 12.20 feet

The monument, recovered and established references for the position are shown on the face of this document.

Analysis of the recovered record data, field evidence and survey measurements, indicates that the monument set by CCHD/SO in 2016 is the accepted location of this corner.

County Coordinates (Cass County North)

Northing 160440.08

Easting 604960.14