



A000627353

OFFICE OF THE COUNTY RECORDER  
CASS COUNTY, MINNESOTA  
CERTIFIED, FILED, AND/OR  
RECORDED ON

12/22/2016 11:46:04 AM

AS DOC #: A000627353

PAGES: 2

REC FEES: 0.00

KATHRYN M. NORBY  
CASS COUNTY RECORDER

BY MW Dep TX#: 135555

Twp 141 Rge 25 Index No. Z.0-21.0

### CERTIFICATE OF LOCATION OF GOVERNMENT CORNER

Std Southeast corner of Section 35, Township 141 N., Range 25 W., 5th P.M.

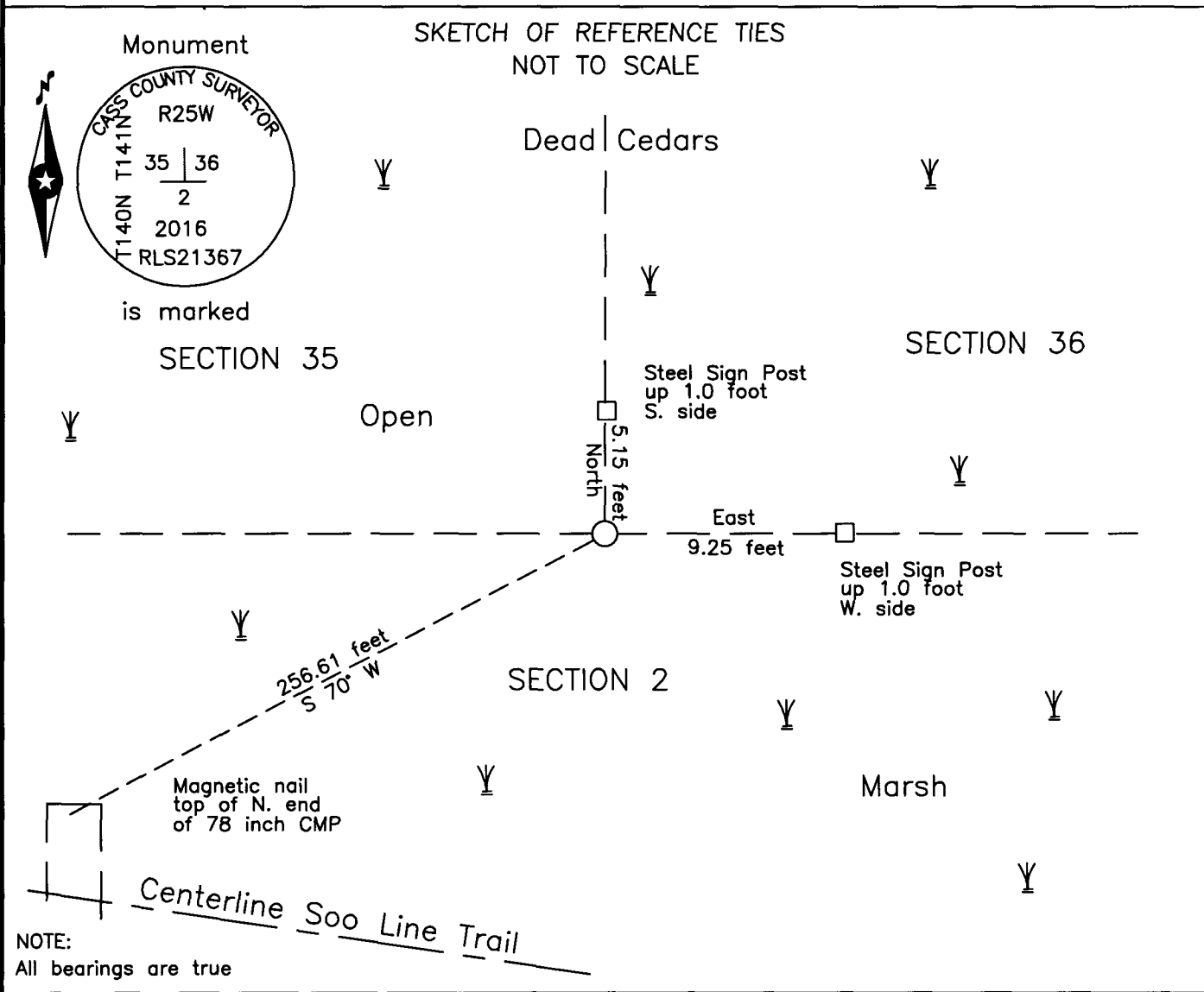
State of Minnesota, County of Cass

At the corner location shown on the sketch:

On \_\_\_\_\_ found \_\_\_\_\_

left monument as found     lowered monument     removed monument (explain)

On 27 Oct 2016 placed an 1 inch by 30 inch aluminum tube with aluminum cap,  
up 1.0 foot in open marsh.



Statement of evidence relative to this corner location is on the back of this page.

I hereby certify that this survey, plan or report was prepared by me or under my direct supervision and that I am a duly Licensed Land Surveyor under the laws of the State of Minnesota.

Terry L. Freeman, Cass County Surveyor  
Date 12/21/16 MN License No. 21367

Page 1 of 2  
A000627353



**Index No. Z.0-21.0**

Statement of Evidence

**Standard Southeast corner Section 35, Township 141 North, Range 25 West, 5th Principal Meridian.**

Sept. 1863 G.A. Johnson and A.L. Thornton, General Land Office (GLO) Deputy Surveyors in the notes for the 10th Parallel on the south side of Township 141 North, Range 25 West, set a post for the original corner and referenced it as follows:

5" W. Cedar N 50° W 6 links (3.96 feet) 9" W. Cedar N 25° E 40 links (26.40 feet)

Said records are on file with the Minnesota Historical Society, St. Paul, Minnesota, copies are filed with the Cass County Highway Department, Surveyor's Office (CCHD/SO).

Circa 1910 Soo Line Railroad right-of-way map, on file with the CCHD/SO, indicates distances from centerline to the subject corner, 390 feet north of the centerline of the railroad and 385 feet east of the centerline of the railroad the railroad stationing of the intersection with the south line of Section 35. The record does not indicate what was recovered or set at the corner.

Nov. 2003 B. Hippen and T. Anderson, technicians, records of the CCHD/SO, located culverts on the Soo Line Railroad to determine stationing, a pine stump for the northeast corner of Section 2, agrees very well with the position determined from the 1910 Railroad data.

Oct. 2016 B. Hippen, technician, records of the CCHD/SO, set a 1 inch by 30 inch Aluminum tube with a 3 inch cap, up 1.0 foot in open marsh, at the GLO distance from the northeast corner of Section 2, Twp. 140 N., Rge. 25 W. on the projection of the line between the southeast corner of Section 36 and the northeast corner of Section 2. This position fits very well with the Soo Line Railroad position and witnessed as follows:

78" CMP S 70° W 256.61 feet Sign Post North 5.15 feet  
Sign Post East 9.25 feet NE Sec 2 S 89°36'56" E 18.48 feet

The monument, recovered and established references for the position are shown on the face of this document.

**Analysis of the recovered record data, field evidence and survey measurements, indicates that the monument set by CCHD/SO in 2016 is the correct perpetuation of this corner.**

**County Coordinates (Cass County North)**

**Northing 163344.61**

**Easting 604946.64**