



A000623748

OFFICE OF THE COUNTY RECORDER
CASS COUNTY, MINNESOTA
CERTIFIED, FILED, AND/OR
RECORDED ON

8/11/2016 11:01:10 AM

AS DOC #: A000623748

PAGES: 2

REC FEES: 0.00

KATHRYN M. NORBY
CASS COUNTY RECORDER

BY SR _____ Dep TX#: 132575

Page 1 of 2
A000623748

Twp 139 Rge 28 Index No. E.0-05.0

CERTIFICATE OF LOCATION OF GOVERNMENT CORNER

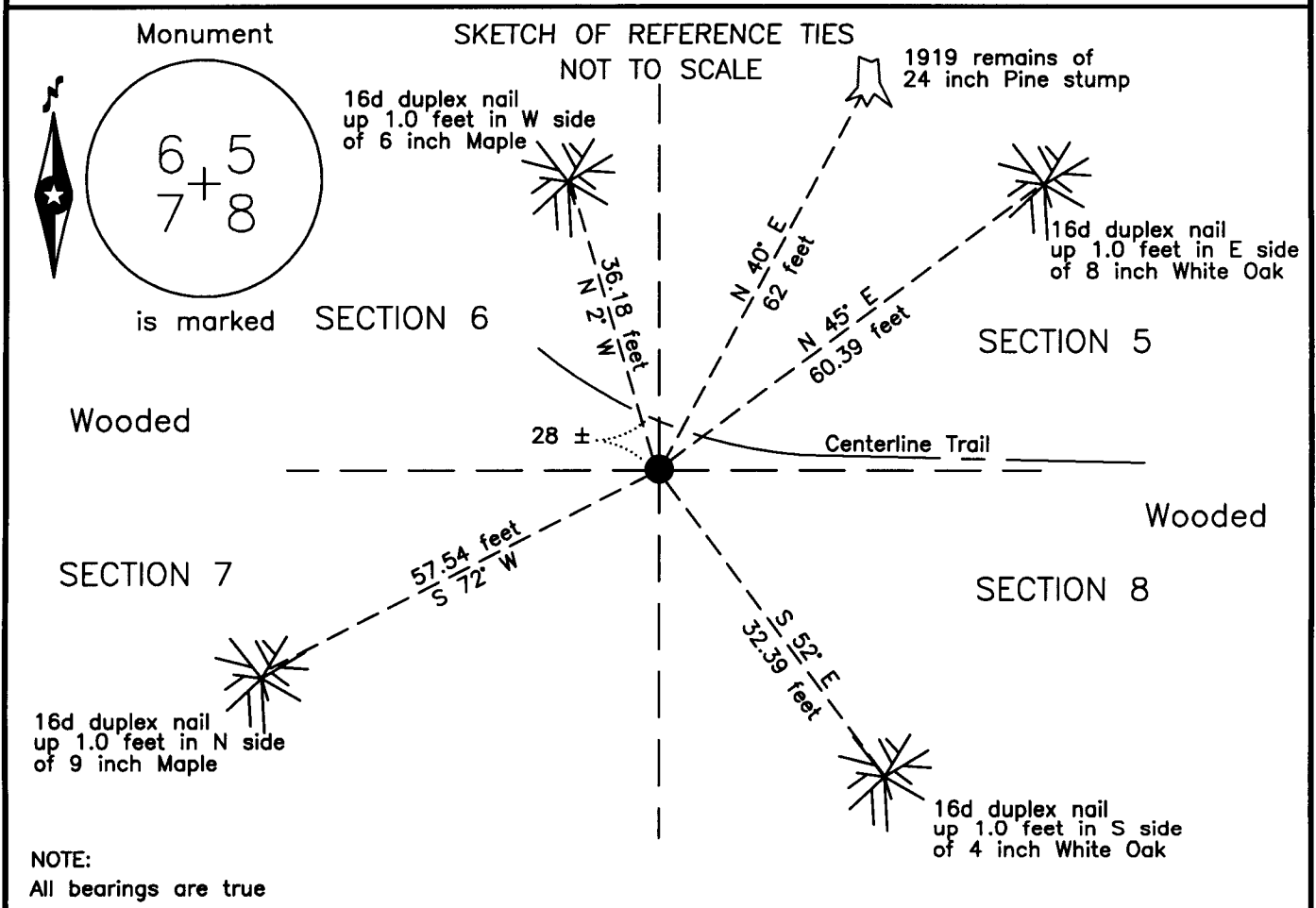
Northeast corner of Section 7, Township 139 N., Range 28 W., 5th P.M.
State of Minnesota, County of Cass

At the corner location shown on the sketch:

On 14 May 2002 found a 2.5 inch ODIP, with plumbers cap, up 1.2 feet

left monument as found lowered monument removed monument (explain)

On _____ placed _____



Statement of evidence relative to this corner location is on the back of this page.

I hereby certify that this survey, plan or report was prepared by me or under my direct supervision and that I am a duly Licensed Land Surveyor under the laws of the State of Minnesota.

Terry L. Freeman, Cass County Surveyor

Date 8/10/16 MN License No. 21367

**Index No. E.0-05.0**Statement of Evidence**Northeast corner of Section 7, Township 139 North, Range 28 West, 5th Principal Meridian.**

- April 1864 Johnson and Thornton, General Land Office Deputy Surveyors, notes for the subdivision of Township 139 North, Range 28 West, set a post for the original corner and referenced it as follows:
- | | | | | | |
|----------|---------|-----------------------|----------|---------|-----------------------|
| 4" Aspen | N 30° E | 20 links (13.20 feet) | 7" Aspen | N 42° W | 16 links (10.56 feet) |
| 4" Aspen | S 15° E | 19 links (12.54 feet) | 5" Aspen | S 21° W | 22 links (14.52 feet) |
- The above record is on file with the Minnesota Historical Society in St. Paul, Minnesota, copies are filed with the Cass County Highway Department, Surveyor's Office (CCHD/SO).
- Dec. 1919 B. Clark, LS 231, Survey Record No. 434, Book C, page 331, on file in the CCHD/SO, states "Set Sec. cor. 6-7-5-8. Set same west 77.7 ½ ft. Set same south 67.5 ¾ ft." On page 334, notes state "drove Iron pipe 2 ½ in. diam. 2 ft. long with a 2 ft. point drove same 4 ft. in ground where true lines intersect" and lists the following witness tree:
- | | | |
|-------------------|---------|-------------|
| 24" W. Pine stump | N 35° E | 61.8 ½ feet |
|-------------------|---------|-------------|
- Dec. 1921 B. Clark, LS 231, Deputy County Surveyor, in a County Resurvey on file in the Cass County Recorders Office (CCRO), as Document Number 69799, indicates Iron Monument.
- 1938 Civilian Conservation Corps (CCC), personnel, Washburn Lake Book 12, page 10 on file in the Minnesota Department of Natural Resources(DNR) offices, indicate at 5325' from E. – Fnd W. Pine stump B.T.
- May 2002 B. Hippen and T. Anderson, technicians, records of the CCHD/SO, found 2.5 inch outside diameter iron pipe, with a plumber cap, up 1.2 feet, 8 feet, more or less, south of trail.

The monument, recovered and established references for the position are shown on the face of this document.

Analysis of the recovered record data, field evidence and survey measurements, indicates that the monument recovered by CCHD/SO is the accepted location of this corner.

County Coordinates (Cass County North)

Northing 126834.67

Easting 489716.93