



A000621223

OFFICE OF THE COUNTY RECORDER
CASS COUNTY, MINNESOTA
CERTIFIED, FILED, AND/OR
RECORDED ON

5/12/2016 11:38:55 AM

AS DOC #: A000621223

PAGES: 2

REC FEES: 0.00

KATHRYN M. NORBY
CASS COUNTY RECORDER

BY SR _____ Dep TX#: 130514

Page 1 of 2 A000621223

Twp 138 Rge 30 Index No. N.0-21.0

CERTIFICATE OF LOCATION OF GOVERNMENT CORNER

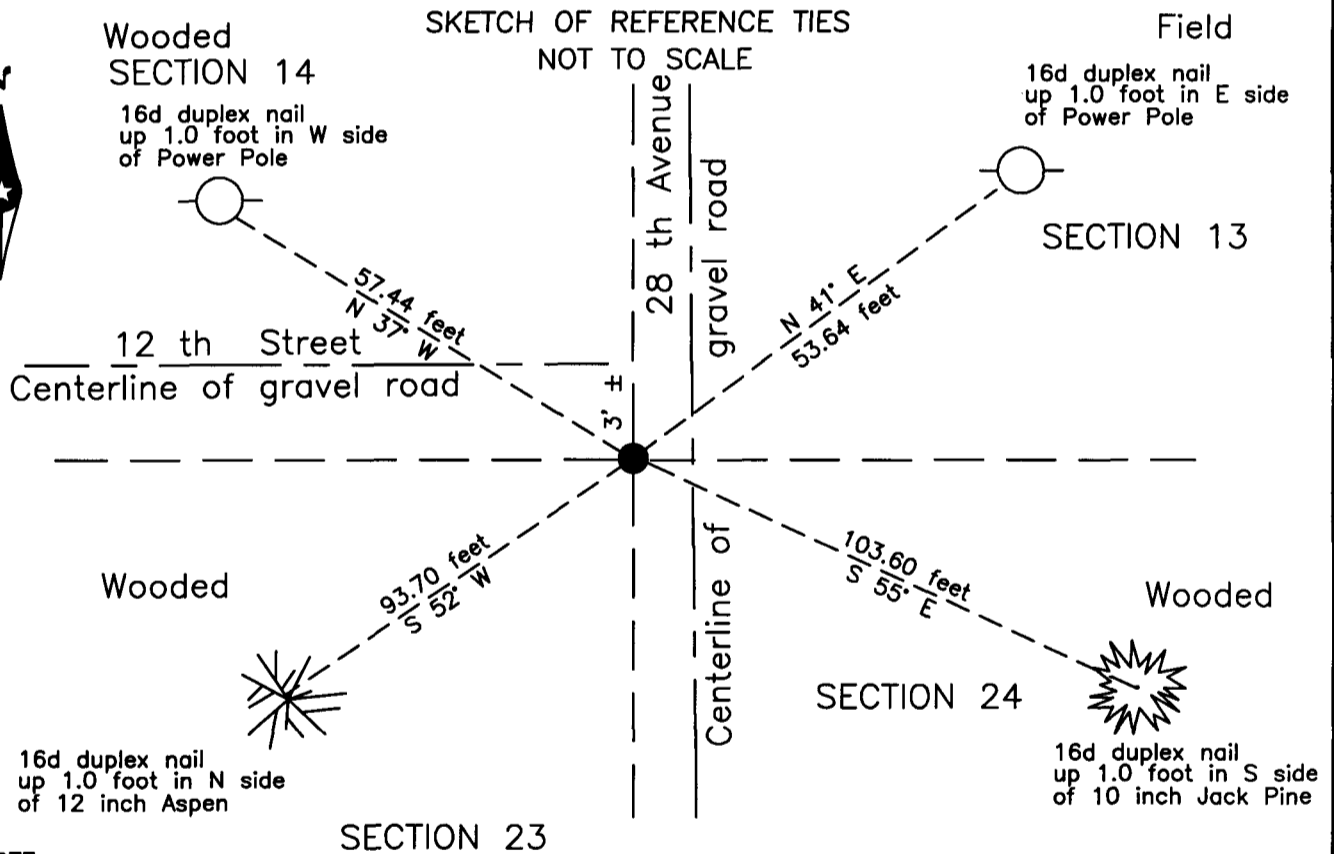
Northeast corner of Section 23, Township 138 N., Range 30 W., 5th P.M.
State of Minnesota, County of Cass

At the corner location shown on the sketch:

On 2 Feb. 2006 found _____ a 2 inch ODIP, down 1.3 feet, 1 foot ± West
_____ and 3 feet ± South of centerline intersection.

left monument as found lowered monument removed monument (explain)

On _____ placed _____



NOTE:
All bearings are true

Statement of evidence relative to this corner location is on the back of this page.

I hereby certify that this survey, plan or report was prepared by me or under my direct supervision and that I am a duly Licensed Land Surveyor under the laws of the State of Minnesota.

Terry L. Freeman, Cass County Surveyor
Date 5/11/16 MN License No. 21367



Index No. N.0-21.0

Statement of Evidence

Northeast corner of Section 23, Township 138 North, Range 30 West, 5th Principal Meridian.

- Aug. 1865 G.B. Wright, General Land Office (GLO) Deputy Surveyor in the subdivision of Township 138 North, Range 30 West set a post for the original corner and referenced it as follows:

12" Blk Pine	N 30° 1/2 E	27 links (17.82 feet)	14" Blk Pine	N 11° W	23 links (15.18 feet)
14" Blk Pine	S 43° 1/2 W	54 links (35.64 feet)	12" Blk Pine	S 53° E	28 links (18.48 feet)

 Said records are on file with the Minnesota Historical Society, St. Paul, Minnesota, copies are filed with the Cass County Highway Department, Surveyor's Office (CCHD/SO).

- May 1905 N.W. Hicks, Deputy County Surveyor, Township Road Order, Surveyors Report, on file in the CCHD/SO, notes the corner and indicates B.T. in Sections 13 and 24, and shows a distance of 5285.5 feet to the Northeast corner of Section 14 and a distance of 2650.5 feet to the North Quarter corner of Section 23.

- June 1908 J.W. Curo, LS 1428, County Surveyor, Township Road Order, Surveyors Report and Curo Book 95, page 109, on file in the CCHD/SO, notes the corner and states "The NW, SW & SE BTS are there and check out well for distance & measurement heart of tree. The roots of NE B.T. check out and the tree's there marked but down. I drove good stake at true corner near fence cor." Surveyors Report states "Set from 4 old Gov't bearing trees", and shows a distance of 5317 feet to the Northeast corner of Section 26.

- May 1914 J.W. Curo, LS 1428, County Surveyor, Curo Book 92, page 14, on file in the CCHD/SO, notes state "Starting at the N.W. corner of sec 24 we run E".

- March 1999 R. Mustonen, LS 11946, Certificate of Survey, copy on file in the CCHD/SO survey records, indicates a monument found at this corner and shows a distance of 2646.90 feet to the East Quarter corner of Section 14.

- June, 1990 W.E. Curo, LS 11395, Curo Book 326, page 70, on file in the CCHD/SO, indicates the subject corner.

- Sept. 2002 R. Mustonen, LS 11946, Certificate of Survey, copy on file in the CCHD/SO survey records, indicates a monument at this corner.

- Feb. 2006 B. Hippen, technician, records of the CCHD/SO, found a 2 inch outside diameter iron pipe, down 1.3 foot, 1 foot, more or less, east and 3 feet, more or less, south of the centerline intersection of 28th Avenue and 12th Street, and witnessed as follows:

10" J. Pine	S 55° E	103.60 feet	Power Pole	N 41° E	53.64 feet
11" J. Pine	S 34° W	131.20 feet	Power Pole	N 20° W	57.44 feet

- May, 2007 B. Grivna, LS 172253, Certificate of Survey for Mike Orth, copy on file in the CCHD/SO survey records, indicates a monument found 2650.15 west of the North Quarter corner of Section 23.

- April 2016 B. Hippen, technician, records of the CCHD/SO, found monument and witnesses from 2006. The southwest tree is dead and down, add the following new witness:

12" Aspen	S 52° W	93.70 feet			
-----------	---------	------------	--	--	--

 The monument, together with the recovered and established references for the position are shown on the face of this document.

Analysis of the recovered record data, field evidence and survey measurements, indicates that the monument found by the CCHD/SO in 2006 is the accepted location of this corner.

County Coordinates (Cass County South)
Northing 320947.64
Easting 509324.92