



A000620818

OFFICE OF THE COUNTY RECORDER  
CASS COUNTY, MINNESOTA  
CERTIFIED, FILED, AND/OR  
RECORDED ON

4/28/2016 10:33:14 AM

AS DOC #: A000620818

PAGES: 3

REC FEES: 0.00

KATHRYN M. NORBY  
CASS COUNTY RECORDER

BY SR \_\_\_\_\_ Dep TX#: 130172

INDEX NO. R.0-5.2

# CERTIFICATE OF LOCATION OF GOVERNMENT CORNER

WC TO

MC 27 Corner of Section 29, Township 136 N, Range 29 W, 5th p.m., State of Minnesota, County of Cass

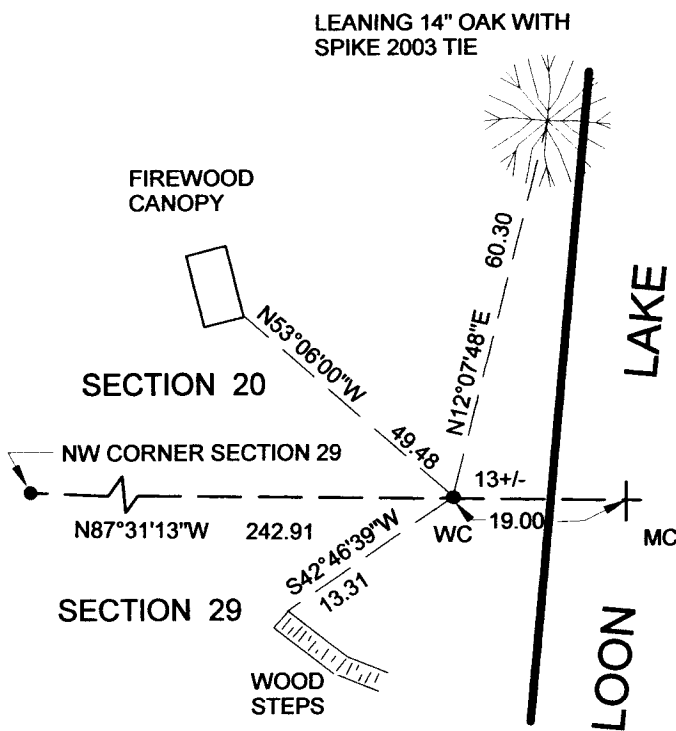
At the corner location shown on the sketch:

On 11/23/2015 found a 1 1/2" PIPE, DOWN 0.2 FEET  
Date

X left monument as found                      lowered monument                      removed monument (explain)

On \_\_\_\_\_ placed a \_\_\_\_\_  
Date

## SKETCH OF REFERENCE TIES



Tie Distances are measured to the spikes.

Cass County Coordinate System (South Zone)  
WC N=251962.70 E= 523938.77  
MC N= 251961.88 E= 523957.75

- Set Re-Rod with RLS cap No. 17774
- Found Pipe



NOT TO SCALE

Statement of evidence relative to this corner location is on back of page.

I hereby certify that this document and the data contained herein was prepared by me or under my direct supervision.

Marvin R. Kohout      4/4/2016  
Marvin R. Kohout      Date

License No. 17774

Land surveyor

OFFICE OF COUNTY RECORDER





**INDEX NO. R.0-5.2**

STATEMENT OF EVIDENCE

**MEANDER CORNER NO. 27 OF SECTION 29, TOWNSHIP 136 N., RANGE 29 W., 5<sup>TH</sup> P.M.**

- 1870 DEPUTY SURVEYORS THOMAS B. WALKER, WM. P. ALLEN AND EDGAR P. PUTNAM, SET A WOODEN POST, REFERENCES: 18" N. PINE S6E 47 LINKS 14" N. PINE N59W 52 LINKS RECORDS ON FILE AT THE MN HISTORICAL SOCIETY IN ST. PAUL AND COPIES FILED WITH CASS COUNTY HIGHWAY DEPARTMENT/ SURVEYOR'S OFFICE (CCHD/SO).
- 1909 JOHN W. CURO, LS 1428, COUNTY SURVEYOR, FOUND THE SOUTHEAST ORIGINAL B.T. AND RESET THE CORNER "JUST IN EDGE OF WATER". COUNTY SURVEY RECORD BOOK A, PG 572, SURVEY RECORD 229 CCHD/SO
- 1916 ELMER B. HORST, LS 376, SET A 2"X48" IRON MONUMENT USING THE 1870 SOUTHEAST BEARING TREE. ADDITIONAL REFERENCE: 4" N. PINE N43-30W 31.30 COUNTY SURVEY RECORD BOOK B, PAGES 335-338 AND CURO BK 84 PG 11 CCHD/SO
- DATE ? CERTIFICATE OF SURVEY INDICATES AN IRON MONUMENT MARKING THE LOCATION OF MC NO.27 CERTIFICATE OF SURVEY NO. 5232 CCHD/SO
- 1958 HAROLD J. CURO, LS 3417, IN HIS SKETCH OF SECTION 29 INDICATES AN IRON MONUMENT 262.15 EAST OF THE NORTHEAST CORNER OF SECTION 30 CURO BK 245 PG 96 CCHD/SO
- 1959 HAROLD J. CURO, LS 3417, FINDS THE 1870 SOUTHEAST BEARING TREE AND SETS THE CORNER. CURO BOOK 245 PG 152 CCHD/SO
- 1960 HAROLD J. CURO, LS 3417, FINDS THE STUMPS OF THE BEARING TREES AND SETS A POINT ON THE ICE TO MARK THE MC POSITION. THE MARK IS 6' FROM THE BANK. A WITNESS CORNER WAS SET 12.75 WEST OF THE MC POSITION AND 249.75 FROM THE NORTHEAST CORNER OF SECTION 30. CURO BOOK 245 PG 159-160 CCHD/SO
- 2003 A LANDECKER AND ASSOCIATES, INC. SURVEY CREW FOUND AND ACCEPTED A 1 1/4" IRON PIPE AS THE MEANDER CORNER. REFERENCES: 12" OAK N10W 60.27  
15 N.PINE N38W 28.91 15 N. PINE S28E 60.17 NW COR. SEC.29 WEST 242.64  
CERTIFICATE OF LOCATION OF GOVT CORNER FILED 2/14/2003 CCHD/SO DOCUMENT NO. 462469 CASS COUNTY RECORDER'S OFFICE
- 2006 CYNTHIA M. HIDDE, LS 44881, LANDECKER AND ASSOCIATES, INC., ON HER CERTIFICATE OF SURVEY INDICATES A FOUND IRON MONUMENT 242.93 EASTERLY OF THE NORTHEAST CORNER OF SECTION 30. DOES NOT CALL IT MC. CERTIFICATE OF SURVEY NO. 3252 CCHD/SO



2013 DAVID E. SARRANO, LS 42380, ARRO LAND SURVEYORS, LLC, ON HIS CERTIFICATE OF SURVEY INDICATES A FOUND IRON MONUMENT 241.86 EASTERLY OF THE NORTHEAST CORNER OF SECTION 30 AND IDENTIFIES IT AS THE MC. CERTIFICATE OF SURVEY NO. 7720 CCHD/SO

2015 MARVIN R. KOHOUT, LS 17774, KOHOUT LAND SURVEYING, AND TRAVIS BARE, SURVEY TECHNICIAN, NORTHWOODS SURVEYING, FOUND A 1 ½" IRON MONUMENT 242.91 EASTERLY OF THE NORTHEAST CORNER OF SECTION 30. THE 2003 CERTIFICATE OF LOCATION OF GOVERNMENT CORNER AND THE 2013 SARRANO SURVEY CALL THIS FOUND IRON MONUMENT THE MC, WHEREAS IT IS ACTUALLY A WITNESS CORNER TO THE MC. ACCEPTED THE MONUMENT AS A WITNESS CORNER ON THE NORTH LINE OF SECTION 29 THAT LIES 19.00 WESTERLY OF THE MC LOCATION. THE 2003 OAK REFERENCE WAS FOUND TIPPED OVER THE LAKE.