



A000620649

OFFICE OF THE COUNTY RECORDER  
CASS COUNTY, MINNESOTA  
CERTIFIED, FILED, AND/OR  
RECORDED ON

4/21/2016 11:29:36 AM

AS DOC #: A000620649

PAGES: 2

REC FEES: 0.00

KATHRYN M. NORBY  
CASS COUNTY RECORDER

BY SR \_\_\_\_\_ Dep TX#: 130035

Twp 137 Rge 29 Index No. N.0-05.0

### CERTIFICATE OF LOCATION OF GOVERNMENT CORNER

Northeast corner of Section 19, Township 137 N., Range 29 W., 5th P.M.

State of Minnesota, County of Cass

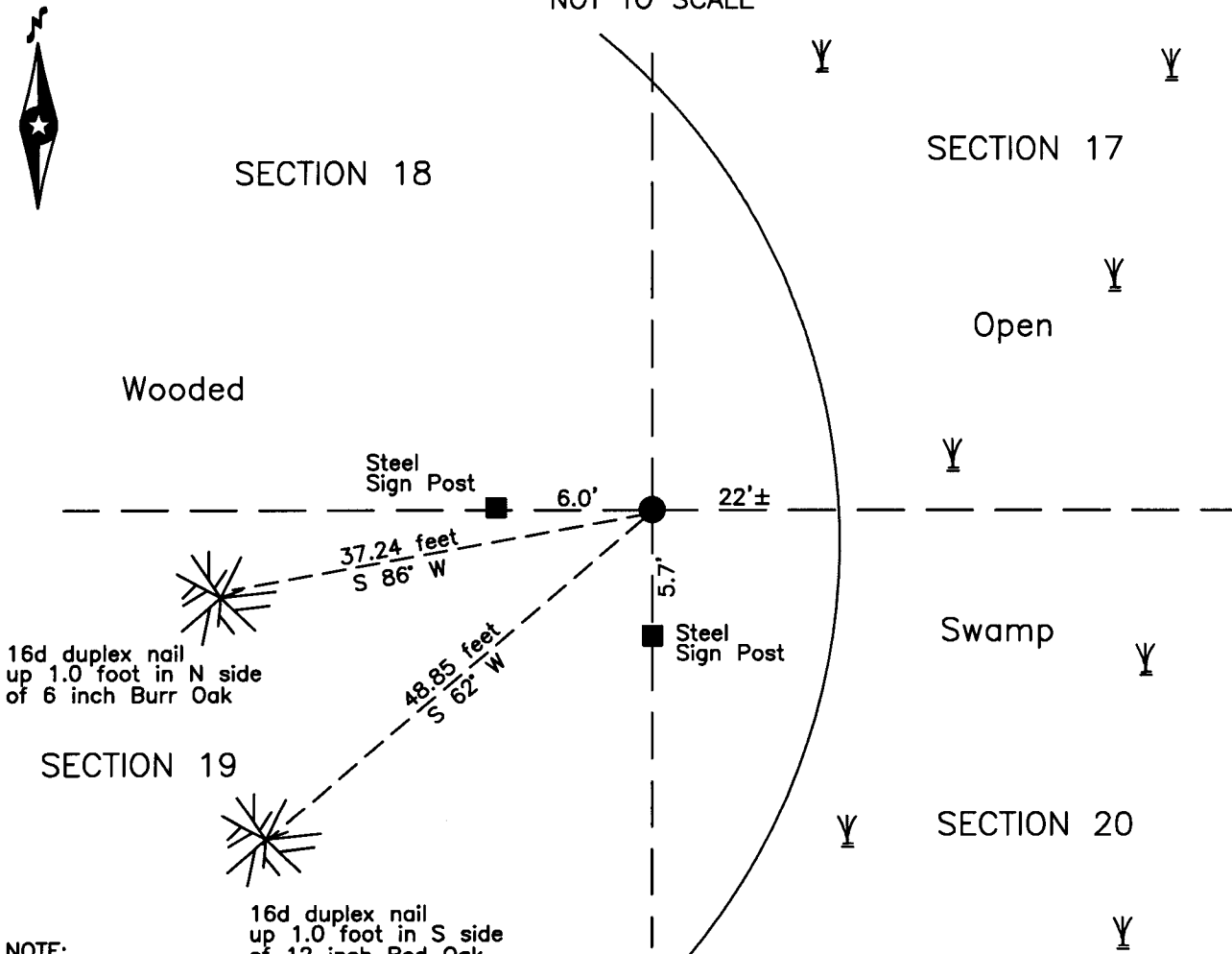
At the corner location shown on the sketch:

On 25 Feb 2016 found a 2.25 inch outside diameter iron pipe, up 1.7 feet,  
22 feet±, West of large open swamp.

left monument as found     lowered monument     removed monument (explain)

On \_\_\_\_\_ placed \_\_\_\_\_

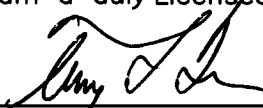
SKETCH OF REFERENCE TIES  
NOT TO SCALE



NOTE:  
All bearings are true

Statement of evidence relative to this corner location is on the back of this page.

I hereby certify that this survey, plan or report was prepared by me or under my direct supervision and that I am a duly Licensed Land Surveyor under the laws of the State of Minnesota.

  
Terry L. Freeman, Cass County Surveyor  
Date 4/20/16 MN License No. 21367



**Index No. N.0-05.0**

Statement of Evidence

**Northeast corner of Section 19, Township 137 North, Range 29 West, 5th Principal Meridian.**

- July 1865 T.B. Walker, General Land Office (GLO) Deputy Surveyor in the notes of the subdivision of Township 137 North, Range 29 West, set a post for the original corner and referenced it as follows:  

15" Aspen	N 16° E	30 links (19.80 feet)		12" Aspen	N 25° W	44 links (29.04 feet)
12" Aspen	S 73° W	30 links (19.80 feet)				

Said records are on file with the Minnesota Historical Society, St. Paul, Minnesota, copies are filed with the Cass County Highway Department, Surveyor's Office (CCHD/SO).
- April 1910 J.W. Curo, LS 1428, Survey Record 156, Book A, page 323 and Curo Book 91 page 23, on file in the CCHD/SO, lists GLO witnesses and states "They are gone so we continue North; still in meadow at 7400 leave meadow".
- July 1914 F.A. Donner, Survey Record 488, Book C, page 564-565 and Curo Book 97 pages 39 and 40, on file in the CCHD/SO, states "At 52 to S. the true corner to secs 17-18-19-20-137-29 sets 26.36 S. & 44.00 West. Later "set Galv. Iron pipe 2"x 48" 2 ft. in ground and made a mound 2 ft. above ground."
- Aug. 1914 J.W. Curo, LS 1428, Walden Township Road Order, on file at the CCHD/SO, indicates iron Sec Cor at this position.
- Jan. 1917 A.W. Moulster, LS 967, County Ditch No. 9, Ditch Shelf 5, Book 17, pages 1, 5 and 9, on file in the CCHD/SO, indicates a 2" Iron Pipe at the SE Cor. Sec. 18.
- Feb. 2016 B. Hippen, technician, records of the CCHD/SO, found 2.25 inch outside diameter iron pipe, up 1.7 feet, 22 feet, more or less, west of open swamp and witnessed as follows:  

Steel Sign Post	West	6.0 feet	6" Burr Oak	S 86° W	37.24 feet
Steel Sign Post	South	5.7 feet	12" Red Oak	S 62° W	48.85 feet

The monument, recovered and established references for the position are shown on the face of this document.

**Analysis of the recovered record data, field evidence and survey measurements, indicates that the monument recovered by the CCHD/SO in 2016 is the accepted location of this corner.**

**County Coordinates (Cass County South)**

**Northing 289135.97**

**Easting 519762.13**