



A000620180

OFFICE OF THE COUNTY RECORDER
CASS COUNTY, MINNESOTA
CERTIFIED, FILED, AND/OR
RECORDED ON

3/30/2016 1:09:47 PM

AS DOC #: A000620180

PAGES: 2

REC FEES: 0.00

KATHRYN M. NORBY
CASS COUNTY RECORDER

BY SR Dep TX#: 129624

Page 1 of 2 A000620180

CERTIFICATE OF LOCATION OF GOVERNMENT CORNER

Index No. C.0 - 21.0

E 1/4 Corner of Section 2, Township 136, Range 31, 5 P.M.
STATE OF MINNESOTA, County of CASS

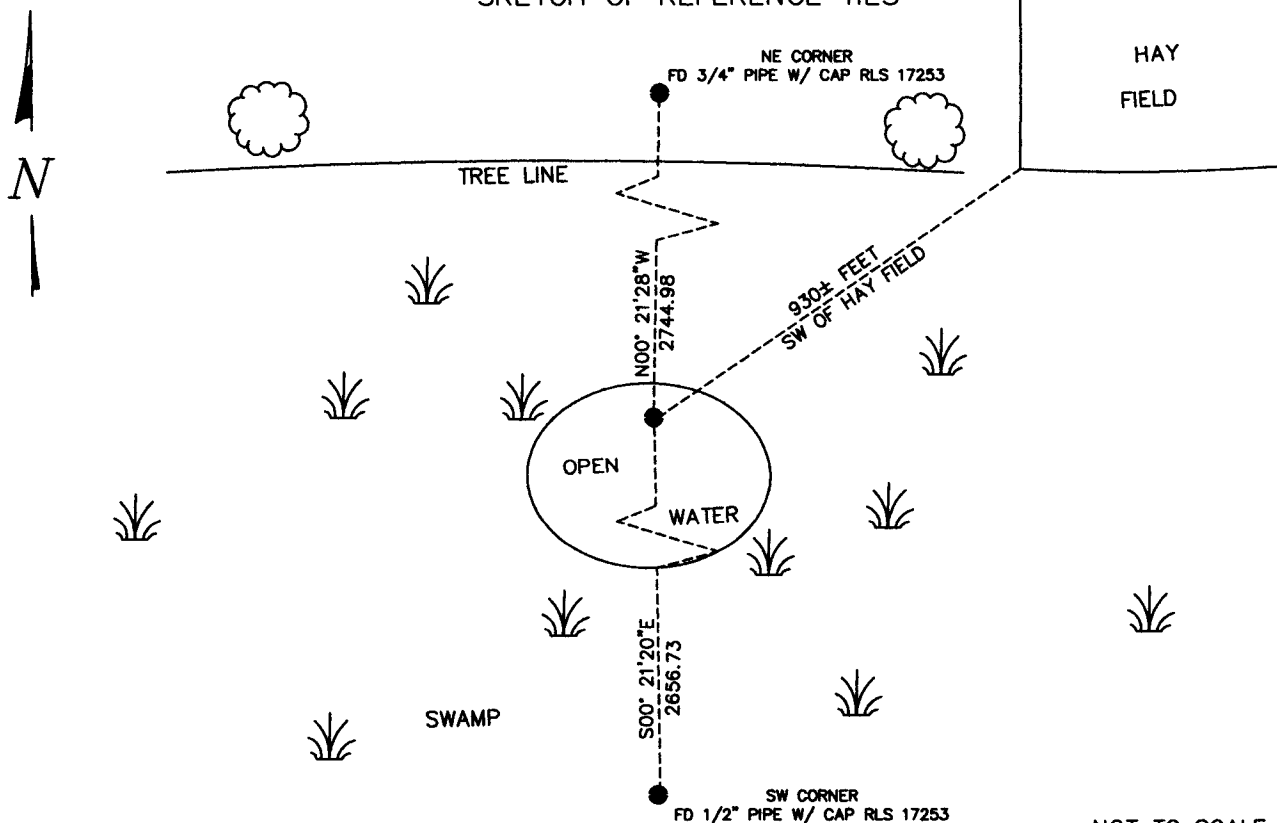
At the corner location shown on the sketch:

On JANUARY 27, 2016 found a NO MONUMENT FOUND DUE TO OPEN WATER, ICE THICKNESS AND UNSTABLE POND BOTTOM
date

left monument as found, lowered monument, removed monument (explain)

On _____ placed a _____
date

SKETCH OF REFERENCE TIES



NOT TO SCALE

Statement of evidence relative to this corner location is on back of this page.

I hereby certify that this document was researched and prepared by me or under my direct supervision.

SIGNATURE *Ross McNamee*

DATE 01-27-2016 Registration No. 45334

Title: Land Surveyor Professional Engineer County Surveyor County Engineer



C.0 – 21.0

The East Quarter Corner of Section 2, Township 136 North, Range 31 West of the Fifth Principal Meridian, Cass County, Minnesota, was established as part of the Original Public Land Survey during 1870. The Original Public Land Survey was done by Richard Cronk, U.S. Deputy Surveyor. The Original monumentation was a set wood post to mark this corner position with bearing tree as follows:

8" Tamarack N76°W – 9 links (5.94 feet)
12" Tamarack S55 1/2°E – 24 links (15.84 feet)

Information on file in the MN Historical Society, St. Paul, MN. Copies in file in the Cass County Highway Dept. Surveyors Office (CCHD/SO).

In 1911, A.W. Moulster found the old government stake set by Cronk with the following bearing trees:

8" Tamarack N76°W – 9 links (5.94 feet)
12" Tamarack S55 1/2°E – 24 links (15.84 feet)

Moulster notes that the bearing trees were down and left in old government stake. Set 1 1/4" x6" galvanized iron pipe in concrete, County Book "A", pages 456-464 and Curo Book 050_1, pages 96, 98 & 104.

Information on file in CCHD/SO.

In April 2003, B. Grivna (#17253) certificate of survey shows 2" Iron Pipe lying down.

Information on file in CCHD/SO.

On January 27, 2016, a Survey Mapping Solutions, Inc. (SMS) survey crew searched for the corner but no monument was found and surrounded by wetlands/bogs and ponds. The location is approximately 930 +/- feet southwest of the northeast hay field. The crew did not set a monument due to open water, ice thickness and unstable pond bottom.

The recovered and established references for the position are shown on the face of this document. Analysis of the recovered data, field evidence and survey measurements, indicates that the calculated monument computed by SMS is the correct perpetuation of this corner.

Contacts pertaining to this corner are as follows:

Cass County Recorder's Office
Cass County Surveyor's Office
Cass County Engineer's Office
Westwood Professional Services
KLD Land Surveying
Bogart, Pederson & Associates Inc.
MN DNR, Division of Lands and Minerals, Survey Section
MN DOT District Surveys Office in Baxter

Section Corner Only Calculated - Not Set
Datum: Cass County South Coordinates
Geodetic Position NAD 83 (1996 HARN Adj.)

N = 270371.038
E = 481192.953