



A000620179

OFFICE OF THE COUNTY RECORDER
CASS COUNTY, MINNESOTA
CERTIFIED, FILED, AND/OR
RECORDED ON

3/30/2016 1:09:46 PM

AS DOC #: A000620179

PAGES: 2

REC FEES: 0.00

KATHRYN M. NORBY
CASS COUNTY RECORDER

BY SR _____ Dep TX#: 129624

Page 1 of 2 A000620179

CERTIFICATE OF LOCATION OF GOVERNMENT CORNER

Index No. A.0 - 21.0

NE Corner of Section 2, Township 136, Range 31, 5 P.M.

STATE OF MINNESOTA, County of CASS

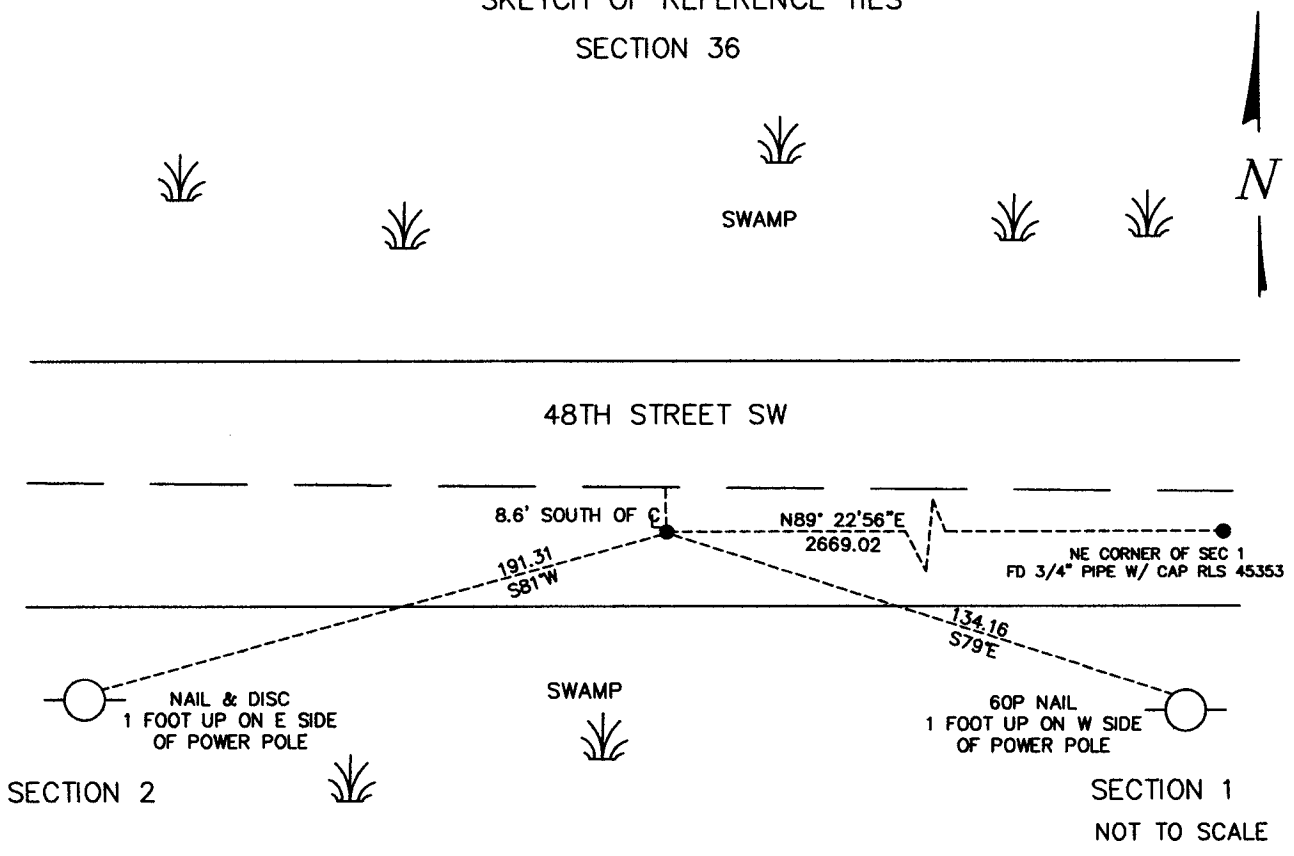
At the corner location shown on the sketch:

On NOVEMBER 23, 2015 found a 3/4" PIPE WITH CAP #17253 DOWN 1± FOOT BELOW ROAD SURFACE AND 8.6± FEET SOUTH
OF CENTERLINE OF 48TH STREET

left monument as found, lowered monument, removed monument (explain)

On _____ date placed a _____

SKETCH OF REFERENCE TIES SECTION 36



Statement of evidence relative to this corner location is on back of this page.

I hereby certify that this document was researched and prepared by me or under my direct supervision.

SIGNATURE Kathryn M. Norby

DATE 11-23-2015 Registration No. 45334

Title: Land Surveyor Professional Engineer County Surveyor County Engineer



A.0 – 21.0

The Northeast Corner of Section 2, Township 136 North, Range 31 West of the Fifth Principal Meridian, Cass County, Minnesota, was established as part of the Original Public Land Survey during 1858. The Original Public Land Survey was done by E.D. Atwater, U.S. Deputy Surveyor. The Original monumentation was a set wood post to mark this corner position with no bearing trees.

Information on file in the MN Historical Society, St. Paul, MN. Copies in file in the Cass County Highway Dept. Surveyors Office (CCHD/SO).

On September 20, 1911, John Curo resurveyed Moose Lake Township and travelled north of the quarter corner shared by sections 1 and 2, to the west side of the east-west graded road where the government notes called for a stake, where he set a 2x48" capped galv. Iron pipe proportionally. County Survey Record Book "A" page 456-464 and Curo Book 50 Page 115. Bearing trees as follows:

Dead Pine 12 S 12°W – 128 links (84.48 feet)
8" Aspen S 19°E – 207 links (136.62 feet)

Information on file in CCHD/SO.

In June 1995, MNDNR found a 2" iron pipe in irregular concrete mass leaning to SSE and down 2 feet, 10 feet south of centerline of east-west road. Static GPS Occupation.

Information on file in CCHD/SO.

In April 2003, B. Grivna (#17253) certificate of survey shows 2.5" pipe was found.

Information on file in CCHD/SO.

December 2014, Corey J. Hendershott (#45353) certificate of survey shows a found ¾" iron pipe w/plastic cap embossed with (RLS 17253).

October 2015, Corey J. Hendershott (#45353) certificate of survey shows a monument was found.

Information on file in CCHD/SO.

On November 23, 2015 a Survey Mapping Solutions, Inc. (SMS) survey crew located ¾ inch pipe w/cap (RLS 17253) down one foot below the road surface. Located 8.6 feet south of centerline of 48th Street.

The recovered and established references for the position are shown on the face of this document. Analysis of the recovered record data, field evidence and survey measurements, indicates that the monument set by Bruce Grivna (#17253) is the correct perpetuation of this corner.

Contacts pertaining to this corner are as follows:

Cass County Recorder's Office
Cass County Surveyor's Office
Cass County Engineer's Office
Westwood Professional Services
KLD Land Surveying
Bogart, Pederson & Associates Inc.
MN DNR, Division of Lands and Minerals, Survey Section
MN DOT District Surveys Office in Baxter

Section Corner observed by GPS
Datum: Cass County South Coordinates
Geodetic Position NAD 83 (1996 HARN Adj.)

N = 273116.971
E = 481175.850