



A000620051

OFFICE OF THE COUNTY RECORDER
CASS COUNTY, MINNESOTA
CERTIFIED, FILED, AND/OR
RECORDED ON

3/24/2016 10:18:43 AM

AS DOC #: A000620051

PAGES: 2

REC FEES: 0.00

KATHRYN M. NORBY
CASS COUNTY RECORDER

BY SR Dep TX#: 129531

Page 1 of 2 A000620051

CERTIFICATE OF LOCATION OF GOVERNMENT CORNER

Index No. G.O - 21.0

E 1/4 Corner of Section 11, Township 136, Range 31, 5 P.M.
STATE OF MINNESOTA, County of CASS

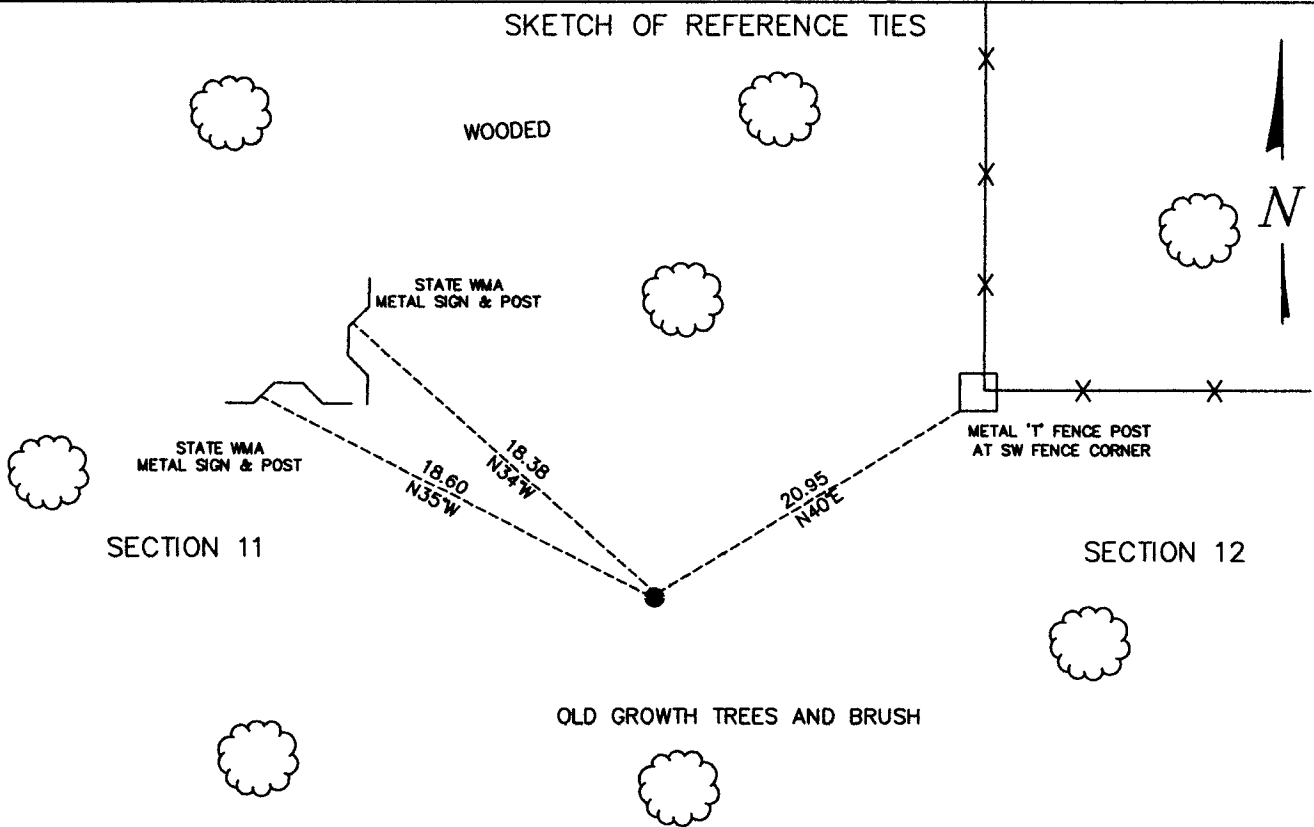
At the corner location shown on the sketch:

On DECEMBER 8, 2015 found a 2x48" CAPPED GALV. IRON PIPE 0.1' FEET ABOVE GROUND SURFACE
date

left monument as found, lowered monument, removed monument (explain)

On _____ placed a _____
date

SKETCH OF REFERENCE TIES



NOT TO SCALE

Statement of evidence relative to this corner location is on back of this page.

I hereby certify that this document was researched and prepared by me or under my direct supervision.

SIGNATURE Kass W...

DATE 12-08-2015 Registration No. 45334

Title: Land Surveyor Professional Engineer County Surveyor County Engineer



G.0 – 21.0

The East Quarter Corner of Section 11, Township 136 North, Range 31 West of the Fifth Principal Meridian, Cass County, Minnesota, was established as part of the Original Public Land Survey during 1870. The Original Public Land Survey was done by Richard Cronk, U.S. Deputy Surveyor. The Original monumentation was a set wood post to mark this corner position with bearing tree as follows:

8" Aspen N 50°W – 15 links (9.9 feet)

6" Birch S 55 ½ °E – 20 links (13.20 feet)

Information on file in the MN Historical Society, St. Paul, MN. Copies in file in the Cass County Highway Dept. Surveyors Office (CCHD/SO).

In 1911, A.W. Moulster set a 2 x 48" capped galv. pipe in concrete as the East Quarter Corner of Section 11. Survey Record Book A pages 456-464, Curo Book 050-1 Pages 102-104.

Information on file in CCHD/SO.

In April 2003, Bruce Grivna (#17253) certificate of survey shows monument found.

Information on file in CCHD/SO.

On December 8, 2015 a Survey Mapping Solutions, Inc. (SMS) survey crew located a 2' x 48" capped galvanized iron pipe 0.1' above the surface of the ground located in dense brush.

The recovered and established references for this position are shown on the face of this document. Analysis of the recovered data, field evidence and survey measurements, indicates that the monument set in 1911 by A.W. Moulster is the correct perpetuation of this corner.

Contacts pertaining to this corner are as follows:

Cass County Recorder's Office
Cass County Surveyor's Office
Cass County Engineer's Office
Westwood Professional Services
KLD Land Surveying
Bogart, Pederson & Associates Inc.
MN DNR, Division of Lands and Minerals, Survey Section
MN DOT District Surveys Office in Baxter

Section Corner observed by GPS

Datum: Cass County South Coordinates

Geodetic Position NAD 83 (1996 HARN Adj.)

N = 265063.203

E = 481247.009