



A000620050

OFFICE OF THE COUNTY RECORDER  
CASS COUNTY, MINNESOTA  
CERTIFIED, FILED, AND/OR  
RECORDED ON

3/24/2016 10:18:42 AM

AS DOC #: A000620050

PAGES: 2

REC FEES: 0.00

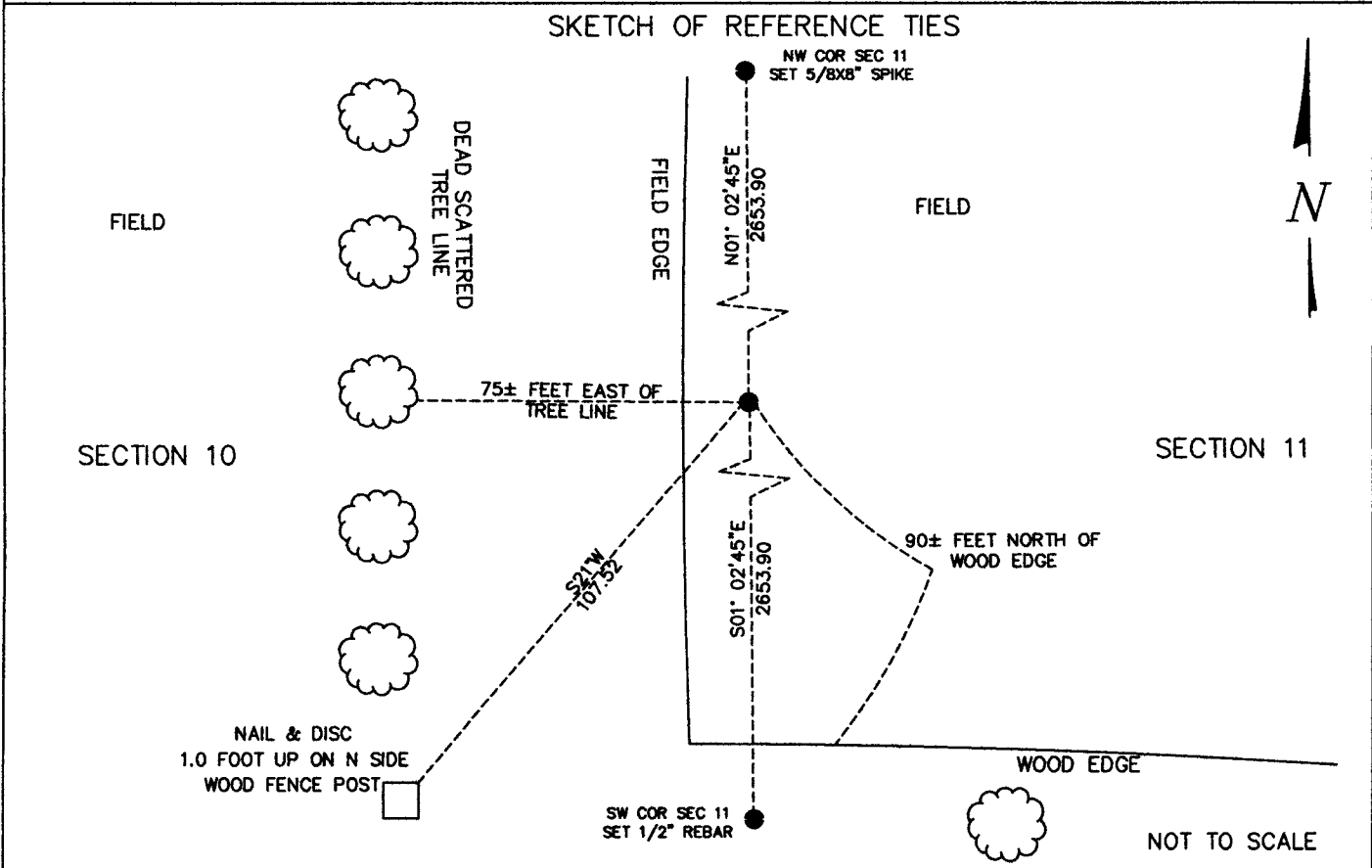
KATHRYN M. NORBY  
CASS COUNTY RECORDER

BY SR \_\_\_\_\_ Dep TX#: 129531

Page 1 of 2 A000620050

**CERTIFICATE OF LOCATION OF GOVERNMENT CORNER** Index No. G.O - 17.0

E 1/4 Corner of Section 10, Township 136, Range 31, 5 P.M.  
STATE OF MINNESOTA, County of CASS  
At the corner location shown on the sketch:  
 On \_\_\_\_\_ found a \_\_\_\_\_  
date \_\_\_\_\_  
 left monument as found,  lowered monument,  removed monument (explain)  
 On JANUARY 27, 2016 placed a 1/2" REBAR IN FIELD 75± EAST OF TREE ROW & 90± NORTH OF WOOD EDGE  
date \_\_\_\_\_



Statement of evidence relative to this corner location is on back of this page.

I hereby certify that this document was researched and prepared by me or under my direct supervision.  
SIGNATURE Kathryn M. Norby DATE 01-27-2016 Registration No. 45334  
Title:  Land Surveyor  Professional Engineer  County Surveyor  County Engineer



G.0 – 17.0

The East Quarter Corner of Section 10, Township 136 North, Range 31 West of the Fifth Principal Meridian, Cass County, Minnesota, was established as part of the Original Public Land Survey during 1870. The Original Public Land Survey was done by Richard Cronk, U.S. Deputy Surveyor. The Original monumentation was a set wood post to mark this corner position with bearing tree as follows:

- 5" Birch N 14 1/2°E – 16 links (10.56 feet)
- 6" Birch S 48 3/4°W – 4 links (2.64 feet)

Information on file in the MN Historical Society, St. Paul, MN. Copies in file in the Cass County Highway Dept. Surveyors Office (CCHD/SO).

On December 8, 2015, a Survey Mapping Solutions, Inc. (SMS) survey crew searched for the corner and found nothing. Calculated a new position based on a lost position proportionately between NW and SW corners.

On January 27, 2016, a Survey Mapping Solutions, Inc. (SMS) survey crew set a 1/2" rebar with a cap stamped "RLS 45334" in a corn field, approximately 75 ± feet east of a north – south tree row and 90 ± feet north of wood edge.

The recovered and established references for the position are shown on the face of this document. Analysis of the recovered data, field evidence and survey measurements, indicates that the monument set in 2016 by SMS is the correct perpetuation of this corner.

Contacts pertaining to this corner are as follows:

- Cass County Recorder's Office
- Cass County Surveyor's Office
- Cass County Engineer's Office
- Westwood Professional Services
- KLD Land Surveying
- Bogart, Pederson & Associates Inc.
- MN DNR, Division of Lands and Minerals, Survey Section
- MN DOT District Surveys Office in Baxter

Section Corner observed by GPS  
Datum: Cass County South Coordinates  
Geodetic Position NAD 83 (1996 HARN Adj.)

N = 265021.259  
E = 475979.352