



A000619420

OFFICE OF THE COUNTY RECORDER  
CASS COUNTY, MINNESOTA  
CERTIFIED, FILED, AND/OR  
RECORDED ON

2/17/2016 2:08:34 PM

AS DOC #: A000619420

PAGES: 2

REC FEES: 0.00

KATHRYN M. NORBY  
CASS COUNTY RECORDER

BY KF Dep TX#: 128981

Page 1 of 2 A000619420

### CERTIFICATE OF LOCATION OF GOVERNMENT CORNER

Index No. G.0 - 17.0

E 1/4 Corner of Section 10, Township 137 N, Range 31, 5 P.M.  
STATE OF MINNESOTA, County of CASS

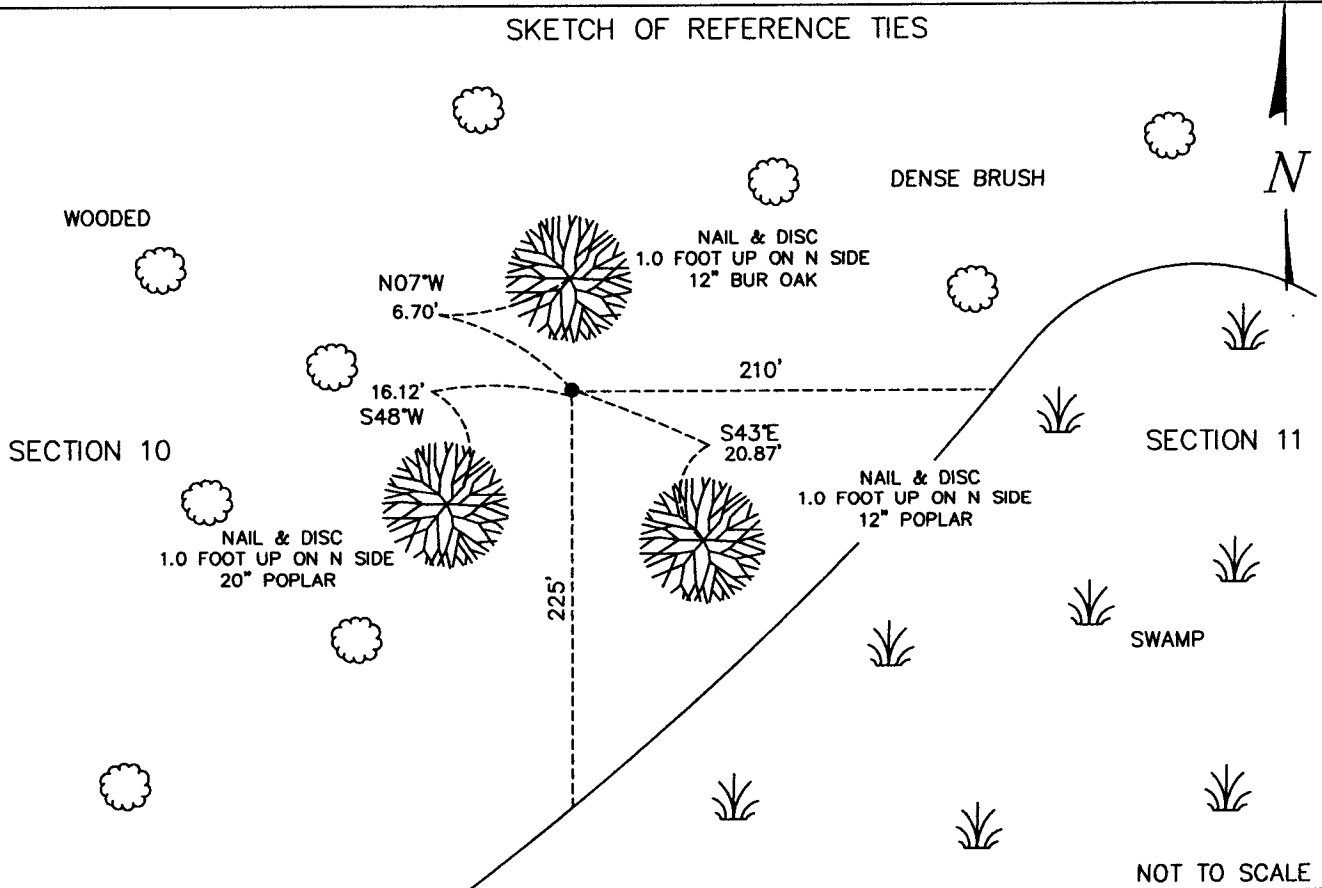
At the corner location shown on the sketch:

On \_\_\_\_\_ date found a \_\_\_\_\_

left monument as found,  lowered monument,  removed monument (explain)

On JANUARY 14, 2016 date placed a 5/8" REBAR EMBOSSED WITH CAP "RLS 45334", 0.4' ABOVE THE SURFACE

#### SKETCH OF REFERENCE TIES



Statement of evidence relative to this corner location is on back of this page.

I hereby certify that this document was researched and prepared by me or under my direct supervision.

SIGNATURE Ross W. [Signature]

DATE 12/10/2015 Registration No. 45334

Title:  Land Surveyor  Professional Engineer  County Surveyor  County Engineer



G.0 – 17.0

The East Quarter corner of Section 10, Township 137 North, Range 31 West of the Fifth Principal Meridian, Cass County, Minnesota, was established as part of the Original Public Land Survey during August of 1870. The Original Public Land Survey was done by Richard Cronk, U.S. Deputy Surveyor. The Original monumentation was a set wood post to mark this corner position with bearing tree as follows:

7” Norway Pine S 34°E – 13 links (8.58 feet)  
8” Aspen S 57°W – 23 links (15.18 feet)

Information on file in the MN Historical Society, St. Paul, MN. Copies in file in the Cass County Highway Dept. Surveyors Office (CCHD/SO).

In 2015, Survey Mapping Solutions, Inc., Little Falls, MN. researched the Cass County survey records and found nothing for the corner.

The Cass County Highway Department was also researched at this time and no mention of this corner was found.

On January 14, 2016 a Survey Mapping Solutions, Inc. (SMS) survey crew, found no evidence of the corner. Set a ½” x 24” rebar with a cap stamped “RLS 45334” at lost position proportionately between NW and SW corners. Located in dense brush cover. About 225 +/- feet north and 210 +/- feet west of a large bog/slough. Bearing trees as follows:

12” Bur Oak N 07°W – 6.70 feet  
12” Poplar S 43°E – 20.87 feet  
20” Poplar S 48°W – 16.12 feet

The recovered and established references for the position are shown on the face of this document. Analysis of the recovered record data, field evidence and survey measurements, indicates that the monument set by SMS in 2016 is the correct perpetuation of this corner.

Contacts pertaining to this corner are as follows:

Cass County Recorder’s Office  
Cass County Surveyor’s Office  
Cass County Engineer’s Office  
Westwood Professional Services  
KLD Land Surveying  
Bogart, Pederson & Associates Inc.  
MN DNR, Division of Lands and Minerals, Survey Section  
MN DOT District Surveys Office in Baxter

Section Corner observed by GPS

Datum: Cass County South Coordinates  
Geodetic Position NAD 83 (1996 HARN Adj.)

N = 296952.198  
E = 472124.325