



A000619417

OFFICE OF THE COUNTY RECORDER
CASS COUNTY, MINNESOTA
CERTIFIED, FILED, AND/OR
RECORDED ON

2/17/2016 2:08:31 PM

AS DOC #: A000619417

PAGES: 2

REC FEES: 0.00

KATHRYN M. NORBY
CASS COUNTY RECORDER

BY KF Dep TX#: 128981

Page 1 of 2 A000619417

CERTIFICATE OF LOCATION OF GOVERNMENT CORNER

Index No. E.0 - 17.0

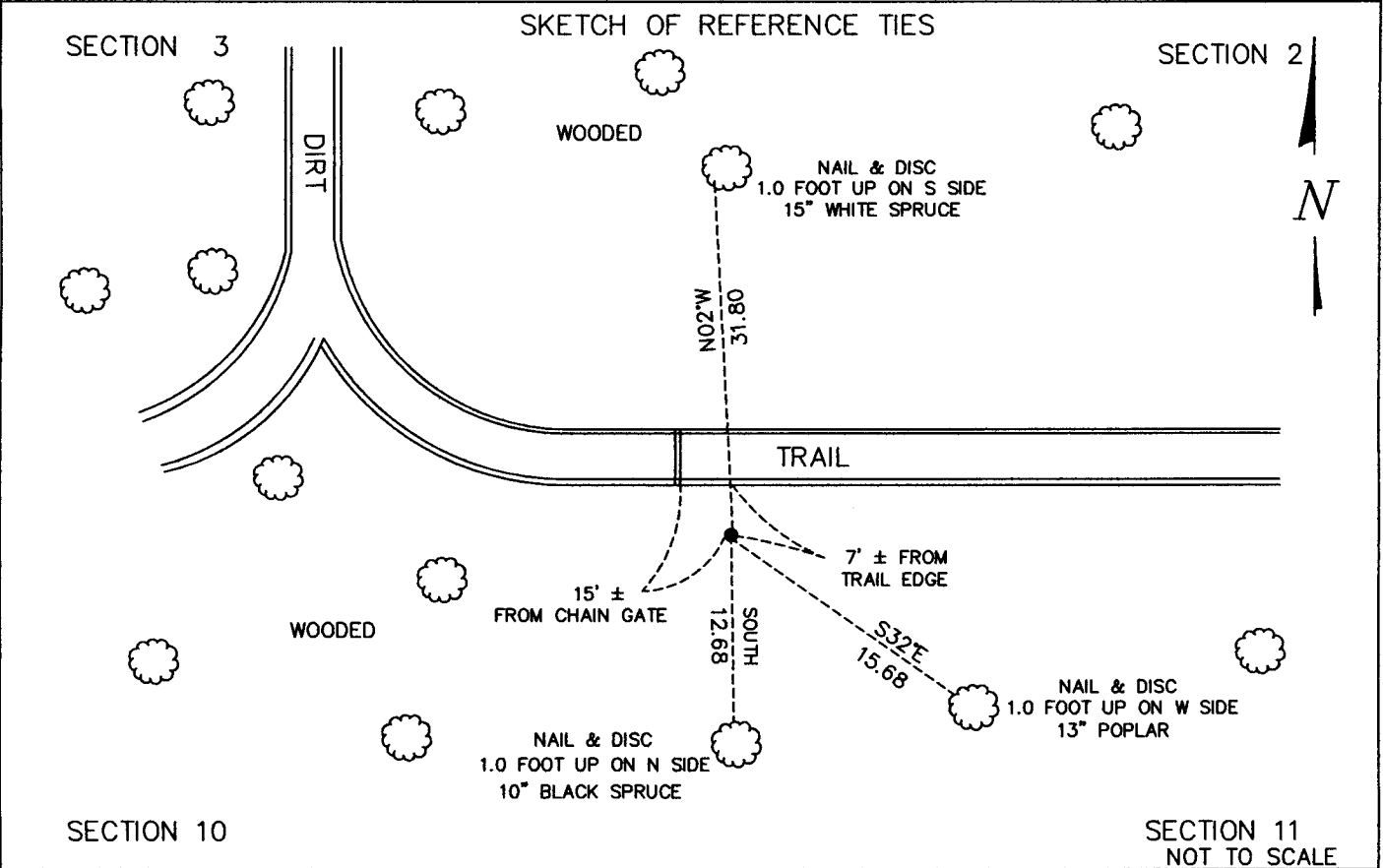
NE Corner of Section 10, Township 137 N, Range 31, 5 P.M.
STATE OF MINNESOTA, County of CASS

At the corner location shown on the sketch:

On NOVEMBER 24, 2015 found a 1/2" PIPE WITH CAP EMBOSSED "RLS 21367" FLUSH WITH GROUND ON BRUSH EDGE
date AND SOUTH OF GRAVEL TRAIL

left monument as found, lowered monument, removed monument (explain)

On _____ date placed a _____



Statement of evidence relative to this corner location is on back of this page.

I hereby certify that this document was researched and prepared by me or under my direct supervision.

SIGNATURE [Signature]

DATE 11/24/2015 Registration No. 45334

Title: Land Surveyor Professional Engineer County Surveyor County Engineer



E.0 – 17.0

The Northeast corner of Section 10, Township 137 North, Range 31 West of the Fifth Principal Meridian, Cass County, Minnesota, was established as part of the Original Public Land Survey during August of 1870. The Original Public Land Survey was done by Richard Cronk, U.S. Deputy Surveyor. Copies in file in the Cass County Highway Dept. Surveyors Office. The Original monumentation was a set wood post to mark this corner position with bearing tree as follows:

7" Jack Pine N 2°E – 17 links (11.22 feet)
6" Jack Pine S 45°W – 2 links (1.32 feet)
8" Jack Pine S 64°E – 18 links (11.88 feet)
7" Jack Pine N 54°W – 58 links (38.28 feet)

Information on file in the MN Historical Society, St. Paul, MN. Copies in file in the Cass County Highway Dept. Surveyors Office (CCHD/SO).

On November 30, 1915, J.A. Johnston re-surveyed Bungo Township and found stake. He then set a 2 1/2" x 48" iron pipe monument. Record in County Book "C" p.284 and p.288 and in Curo Book. 80 Page 12, 30. Ties:

8" Jack Pine N 48°E – (23.1 feet)
6" Dry Jack Pine N 34°-30W – (38.9 feet)

Information on file in CCHD/SO.

In March, 2004, Kevin J. Metz, MnDOT performed a section subdivision and set the corner.

On November 23, 2015 a Survey Mapping Solutions, Inc. (SMS) survey crew located ½ inch pipe embossed with "RLS 21367" Terry L. Freeman flush with the ground and 7' ± south of the trail's edge, 15' ± southeast from chain gate.

On November 24, 2015 SMS contacted Kevin Metz, MnDOT to review and verify the corner location.

The recovered and established references for the position are shown on the face of this document. Analysis of the recovered record data, field evidence and survey measurements, indicates that the monument set by Terry L. Freeman is the correct perpetuation of this corner.

Contacts pertaining to this corner are as follows:

Cass County Recorder's Office
Cass County Surveyor's Office
Cass County Engineer's Office
Westwood Professional Services
KLD Land Surveying
Bogart, Pederson & Associates Inc.
MN DNR, Division of Lands and Minerals, Survey Section
MN DOT District Surveys Office in Baxter

Section Corner observed by GPS

Datum: Cass County South Coordinates
Geodetic Position NAD 83 (1996 HARN Adj.)

N = 299585.336
E = 472139.992