



A000618373

OFFICE OF THE COUNTY RECORDER
CASS COUNTY, MINNESOTA
CERTIFIED, FILED, AND/OR
RECORDED ON

12/24/2015 10:45:44 AM

AS DOC #: A000618373

PAGES: 2

REC FEES: 0.00

KATHRYN M. NORBY
CASS COUNTY RECORDER

BY MW Dep TX#: 128046

Twp 142 Rge 26 Index No. L.O-09.0

CERTIFICATE OF LOCATION OF GOVERNMENT CORNER

East Quarter corner of Section 17, Township 142 N., Range 26 W., 5th P.M.
State of Minnesota, County of Cass

At the corner location shown on the sketch:

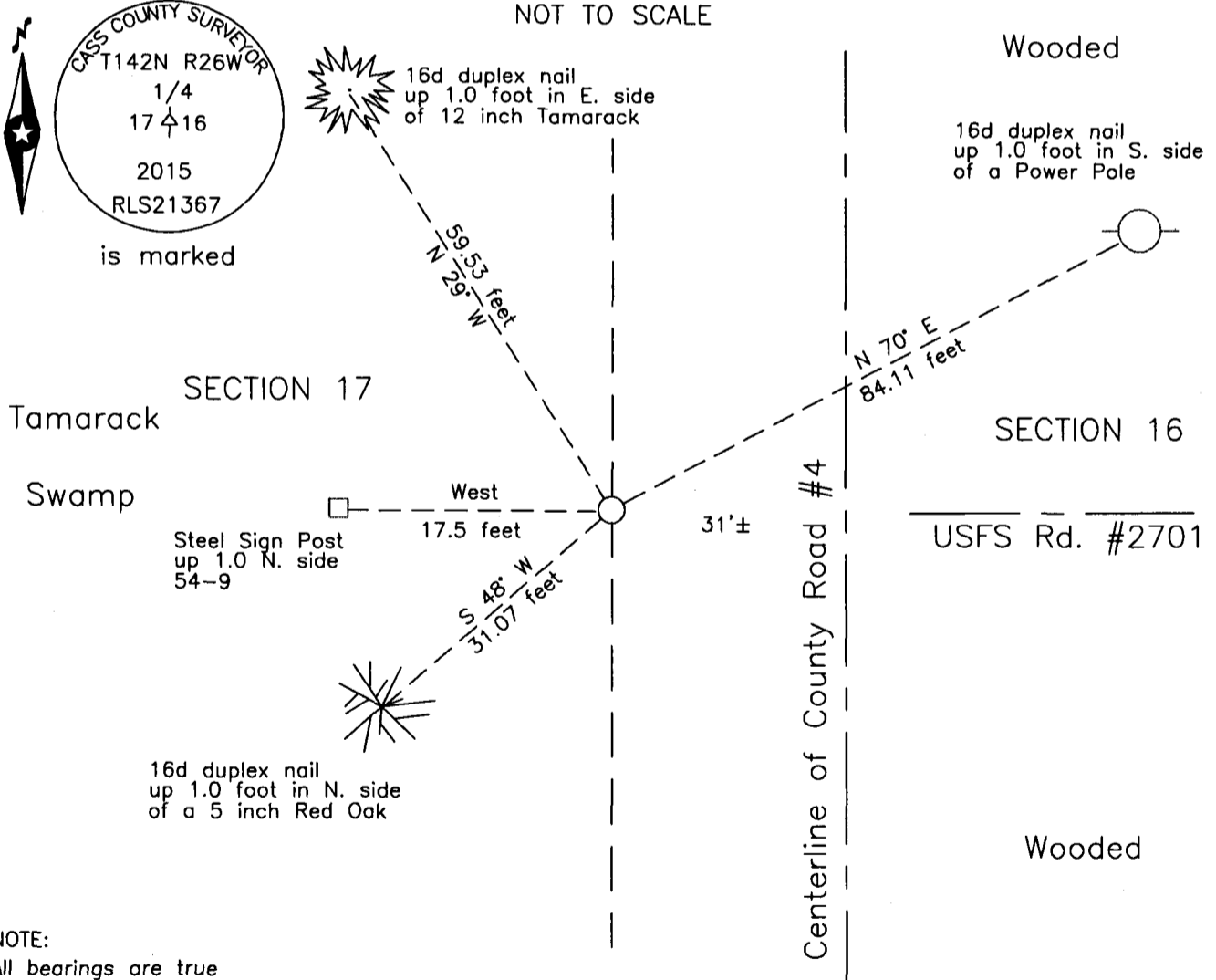
On _____ found _____

left monument as found lowered monument removed monument (explain)

On 2 Nov 2015 placed a 1 inch by 30 inch aluminum tube with aluminum cap,
down 0.2 foot, 31± feet west of new centerline County Road #4.

Monument

SKETCH OF REFERENCE TIES
NOT TO SCALE



NOTE:
All bearings are true

Statement of evidence relative to this corner location is on the back of this page.

I hereby certify that this survey, plan or report was prepared by me or under my direct supervision and that I am a duly Licensed Land Surveyor under the laws of the State of Minnesota.

Terry L. Freeman, Cass County Surveyor
Date 12/23/15 MN License No. 21367



Index No. L.0-09.0

Statement of Evidence

East Quarter corner of Section 17, Township 142 North, Range 26 West, 5th Principal Meridian.

- Nov. 1872 Eli W. Griffin, General Land Office (GLO) Deputy Surveyor, in the notes of the subdivision of Township 142 North, Range 26 West, set a post for the original corner and referenced it as follows:
 14" N. Pine S 51° W 19 links (12.54 feet) 6" Fir S 84° E 20 links (13.20 feet)
 The above record is on file with the Minnesota Historical Society in St. Paul, Minnesota, copies are filed with the Cass County Highway Department, Surveyor's Office (CCHD/SO).

- July 1916 J.H. Flynn, Cass County Surveyor, Survey Record No. 411, Book C, Page 165, Survey of Slater Township Road, on file at the CCHD/SO, states "20026.0' ¼ cor sec. 16-17", notes the GLO witnesses as follows:
 16" N. Pine (St) S 51° W 19 links (12.54 feet) Fir obliterated by fires except roots possibly discernable, and the following new witnesses:
 3" Tamarack S 39° E 41.2 feet 16" N. Pine St. S 61° W 36.3 feet
 This record was filed in July of 1919 by E.B. Horst, Deputy County Surveyor.

- April 1922 C.J. White, LS 1054, Cass County Engineer, Slater Township Map, on file in the CCHD/SO, indicates a road intersection at the subject corner.

- May 1926 J.H. Flynn, Land Surveyor, Survey Record No. 545, Book D, Page 177, Report on Highway Survey, on file at the CCHD/SO, states "150+34 Quarter post for sections 16 & 17, said town where this survey connects with an established highway extending north and east." This record was filed in February of 1928 by J.M. Greene, Cass County Surveyor.

- April 1927 A. Taubman, Assistant Cass County Engineer, Level notes, Slater Township 142-26, Shelf 5, Book 155, Page 44, on file at the Cass County Highway Department (CCHD), shows the distance derived by stationing between the northeast corner of Section 29 (Sta.70+31) and the east quarter corner of Section 17 after a B.M. and in the margin (Sta.+35). This record does not reveal what was recovered at the corner positions and agrees with the Flynn record. He notes the following R.Ps.
 B.T. Pine stump SW 36.2 feet F. Post NW 36.1 feet

- Oct. 1940 R.T. DeFant, Engineer, Civilian Conservation Corp. (CCC), Form 874-9, on file at the U.S. Department of Agriculture Forest Service, (USFS) Cass Lake Office, found nothing at the subject corner and lists the following:
 24" W. Pine Stp S 51° W 19 links (12.54 feet)
 The form indicates he believes this to be a genuine GLO corner. He placed a metal location poster on the following:
 4" Birch S 51° W 19 links (12.54 feet) and notes this is alongside the B.T.

- March 1958 D. Cole, LS 1286, Cass County Engineer, County State Aid Highway No. 4 (CSAH #4), State Project No. 11-617-01, plan on file in the CCHD, indicates the subject corner to be assumed on centerline P.O.T. Station 355+95. The road profile at this location indicates the proposed new grade to be close to 2 feet higher than existing ground which would have been the old road.

- June 1966 J. Ekstrom, USFS, Township Book #1, page 30, on file at the USFS Cass Lake Office, states "No evidence of orig. corner or Flynn's new B.T.s established in 1916. I believe new road runs over point for corner and the wide right of way for road has taken out B.T.s. A real old fence runs due west from Highway."

- 1982 Land Corner Record, records of the CCHD/SO, indicates CCHD and Surveyor found nothing at the subject corner and no sign of Fence west.

- June 2015 B. Hippen, technician and P. Swentkofske, CCHD equipment operator, records of the CCHD/SO, prior to reconstruction of CSAH #4, excavated a 6 foot east-west by 10 feet north-south area based on record dimensions. The dig was 1 foot deep. No evidence of corner or witnesses was recovered.

- Nov. 2015 B. Hippen, technician, records of the CCHD/SO, set a 1 inch diameter aluminum tube with aluminum cap, at the obliterated 1916 position, down 0.2 foot, 31 feet, more or less, west of the centerline of CSAH #4 and witnessed as follows:
 12" Tamarack N 29° W 59.53 feet P. Pole N 70° E 84.11 feet
 5" Red Oak S 48° W 31.07 feet Steel Post West 17.5 feet

The recovered and established references for the position are shown on the face of this document.

Analysis of the recovered record data, field evidence and survey measurements, indicates that the monument set in 2015 by the CCHD/SO, is the accepted location of this corner.

County Coordinates (Cass County North)
Northing 213318.65
Easting 557209.06