



A000618365

OFFICE OF THE COUNTY RECORDER  
CASS COUNTY, MINNESOTA  
CERTIFIED, FILED, AND/OR  
RECORDED ON

12/24/2015 10:45:36 AM

AS DOC #: A000618365

PAGES: 2

REC FEES: 0.00

KATHRYN M. NORBY  
CASS COUNTY RECORDER

BY MW Dep TX#: 128046

Page 1 of 2 A000618365

Twp 139 Rge 25 Index No. R.0-05.0

### CERTIFICATE OF LOCATION OF GOVERNMENT CORNER

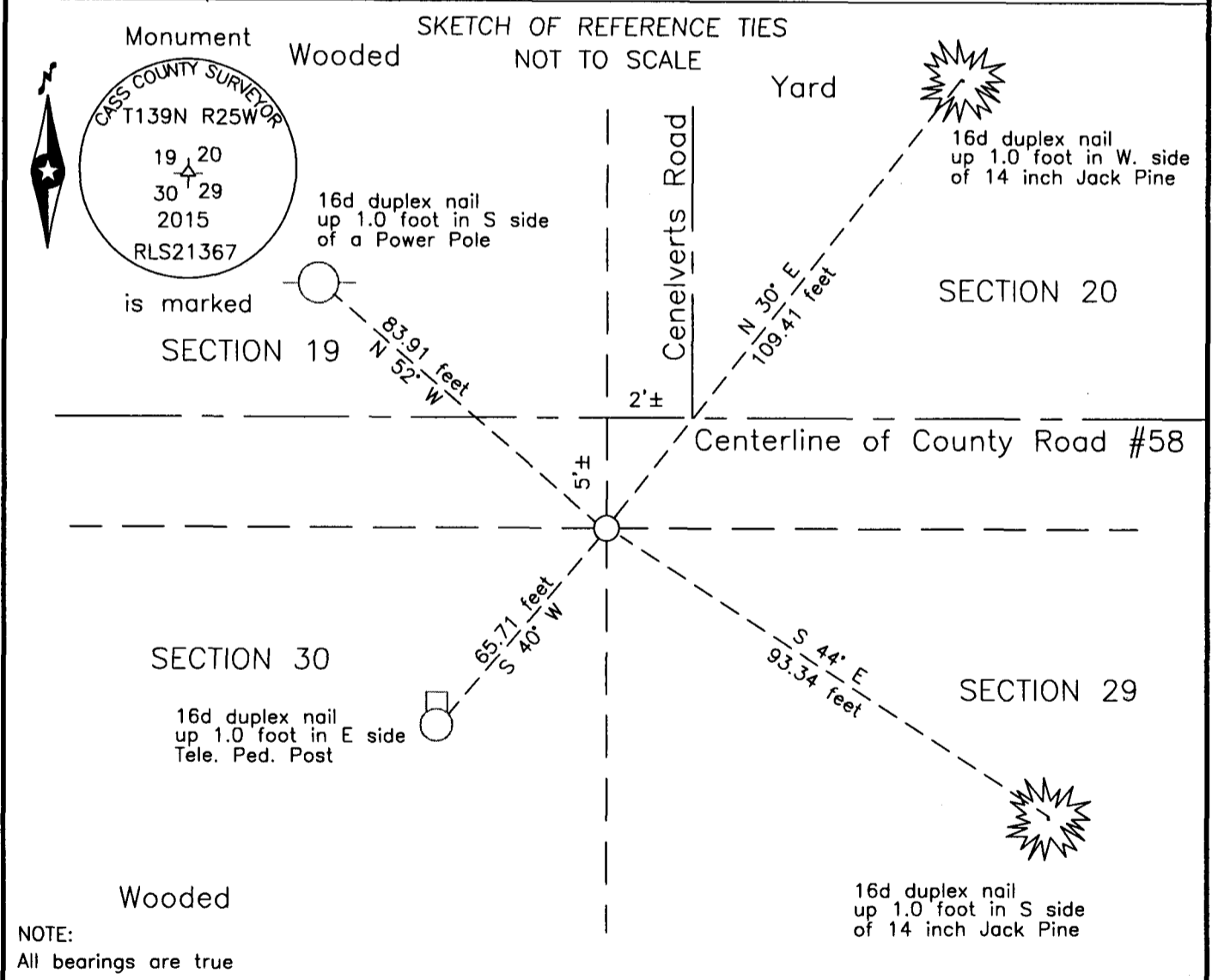
Northeast corner of Section 30, Township 139 N., Range 25 W., 5th P.M.  
State of Minnesota, County of Cass

At the corner location shown on the sketch:

On 4 June 2015 found a 1 inch outside diameter iron pipe, down 0.4 foot,  
6 feet± south of centerline County Road #58 and 2 feet± west of Chenevert Road.

left monument as found     lowered monument     removed monument (explain)

On 30 Sept 2015 placed an 1 inch by 30 inch aluminum tube with aluminum cap,  
down 0.5 foot, 5 feet± south of centerline County Road #58.



Statement of evidence relative to this corner location is on the back of this page.

I hereby certify that this survey, plan or report was prepared by me or under my direct supervision and that I am a duly Licensed Land Surveyor under the laws of the State of Minnesota.

Terry L. Freeman, Cass County Surveyor  
Date 12/23/15 MN License No. 21367



Statement of Evidence

Northeast corner Section 30, Township 139 North, Range 25 West, 5th Principal Meridian.

Nov. 1863 Johnson and Thornton, GLO Deputy Surveyors, in the notes of the subdivision of Township 139 North, Range 25 West, set a post for the original corner and referenced it as follows:
6" Pine stub N 20° E 38 links (25.08 feet) 6" J. Pine S 77° E 94 links (62.04 feet)
8" Pine stub S 70° W 37 links (24.42 feet) 7" Pine stub N 72° W 19 links (12.54 feet)
The above record is on file with the Minnesota Historical Society in St. Paul, Minnesota, copies are filed with the Cass County Highway Department, Surveyor's Office (CCHD/SO).

Circa 1915 G.A Ralph, Engineer, State Rural Highway No. 83, Survey Record 258, Book B, page 92, on file in the CCHD/SO, indicates the Corner at a corner in the road.

1937 Civilian Conservation Corps (CCC), Washburn Lake Camp, Book 2, page 29, on file in the Department of Natural Resources Office (DNR), states Set approx.. Sec. corner at intersection of roads. Book Number 3, page 2, states Line from S. intersects 1 Ch E. of Approx. corner.

Feb. 1972 J.R. Worcester, Cass County Highway Department (CCHD), S.A.P. 11-658-02, on file in the CCHD, plan indicates assumed corner 5.0 feet south at P.O.T. Station 171+75.

May 1984 F.C. Jackson, LS 3600, Surveyor's Certificate, copy on file in the CCHD/SO, indicates a position for the subject corner.

Circa 1986 W. Buckler, LS 9672, Field notes for Section 30, copy on file in the CCHD/SO, indicates Set 1/2" iron at the subject corner.

Feb. 2003 B. Hippen, technician, records of the CCHD/SO, found a spike, down 0.3 foot, on centerline of County Road #58 centerline of Chenevert's Road, located with the Global Positioning System (GPS).

June 2015 B. Hippen, technician, records of the CCHD/SO, prior to reconstruction on County Road #58, found a 1 inch outside diameter iron pipe, down 0.4 foot, below bituminous surface, 6 feet, more or less, south of centerline of County Road #58 and 2 feet, more or less, west of centerline of Chenevert's Road, this agrees favorably with the recovered North 1/4 corner and West 1/16 of Section 30, projected East. Removed pipe prior to road construction and witnessed as follows:

Table with 6 columns: Object, Bearing, Distance, Object, Bearing, Distance. Row 1: Power Pole, N 52° W, 83.91 feet, 14" J. Pine, N 30° E, 109.41 feet. Row 2: 14" J. Pine, S 44° E, 93.34 feet, Tele. Ped. Post, S 40° W, 65.71 feet.

Sept. 2015 B. Hippen, technician, records of the CCHD/SO, after reconstruction on County Road #58, set an aluminum Cass County monument at the recovered iron pipe position, down 0.05 foot, 5 feet, more or less, south of the new centerline and placed the recovered iron pipe, adjacent on the west side.

The monument, recovered and established references for the position are shown on the face of this document.

Analysis of the recovered record data, field evidence and survey measurements, indicates that the monument recovered in 2015 by the CCHD/SO, is the accepted location of this corner.

County Coordinates (Cass County North)
Northing 110596.15
Easting 583959.47