



A000618358

OFFICE OF THE COUNTY RECORDER  
CASS COUNTY, MINNESOTA  
CERTIFIED, FILED, AND/OR  
RECORDED ON

12/24/2015 10:45:29 AM

AS DOC #: A000618358

PAGES: 2

REC FEES: 0.00

KATHRYN M. NORBY  
CASS COUNTY RECORDER

BY MW Dep TX#: 128046

Page 1 of 2 A000618358

### CERTIFICATE OF LOCATION OF GOVERNMENT CORNER

I hereby certify that this survey, plan, or report was prepared by me or under my direct supervision and that I am a duly Licensed Land Surveyor under the laws of the State of Minnesota.

*Patrick A. Stoll*

Date: 12-22-2015 License No: 41002

East Quarter Corner of Section 11, Township 139 N, Range 30 W, 5<sup>th</sup> P.M.

On 5-24-15 found a 1 1/2" iron pipe, up 0.2 feet

left monument as found,  lowered monument,  removed monument (explain)

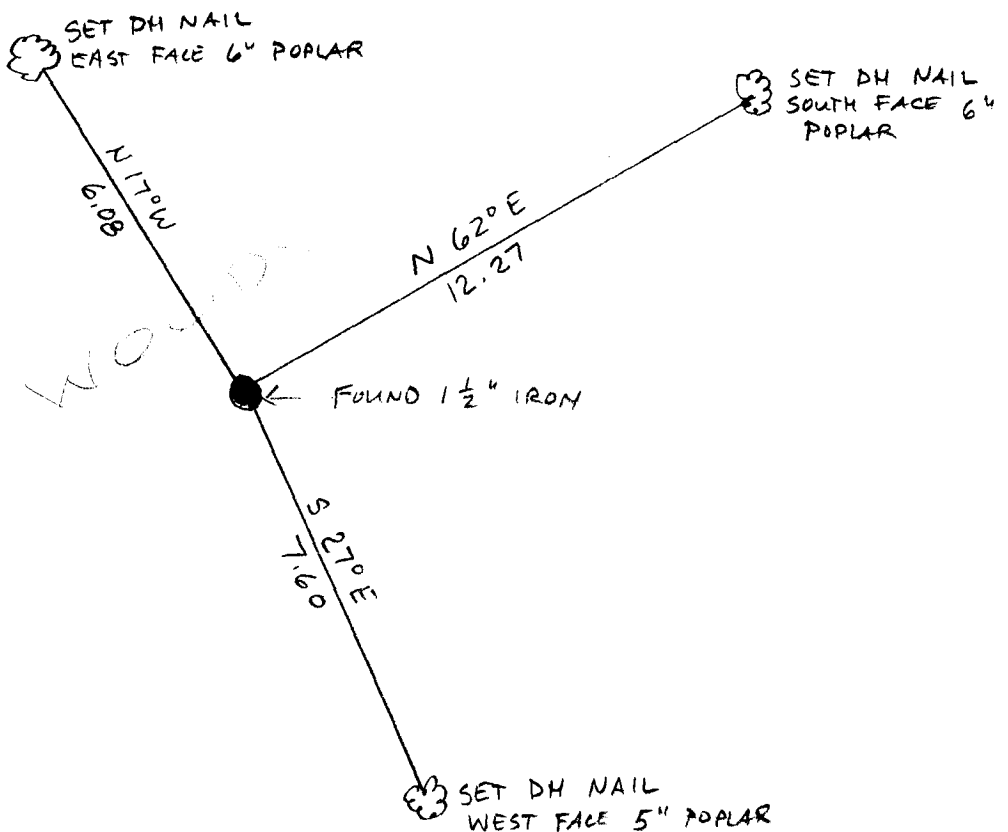
On \_\_\_\_\_ placed a \_\_\_\_\_

### SKETCH OF REFERENCE TIES

Not to Scale

Corner Index:

G.O-21.0





G.0-21.0

**Statement of Evidence**

**East quarter corner, Section 11, Township 139 North, Range 30  
West, 5<sup>th</sup> Principal Meridian, Cass County, Minnesota**

1865 – Wright and Walker, US Deputy Surveyors established this corner. A wood post was set from which the following witnesses were established:

- 6” N. Pine      N 30° E      7 links
- 5” N. Pine      S 75° E      19 links

Information on file in the MN Historical Society, St. Paul, MN. Copies on file in the Cass County Highway Department/Surveyors Office .

1925 – John M. Greene sets corner by single proportionate method between the Northeast and Southeast corners of said Section 11. Notes in Curo Book 190, Pages 3 and 4. Information on file in the Cass County Highway Department/Surveyors Office.

1984– Cass County Land Department found a 1½ ” iron on top of a hill. Information on file in the Cass County Highway Department/Surveyors Office.

1987– Landecker and Associates, Inc. surveyors, while surveying in Section 11 found the 1½ ” iron and existing bearing trees as noted on reference sketch. Monument checks with survey work done by Greene in 1925. Established the following witnesses, as shown on corner certificate filed as Doc. No. A000298533:

- 6” Red Oak      N 46° E      41.70 feet
- 3” W. Pine      S 16° E      52.97 feet
- 4” Birch      S 73° E      5.73 feet
- 6” Red Oak      N 37° E      14.28 feet
- 4” Birch      N 27° E      28.43 feet
- 6” Birch      N 27° W      4.27 feet

2015 – Patrick Trottier, PLS 41002, found the 1½ ” iron pipe square monument. Found Landecker’s 3” W. Pine and 6” Birch trees with tags lying down. Accepted monument as corner and established witnesses as shown on the face of this survey.

**County Coordinates (Cass County North)**

- Northing      124629.35
- Easting      447199.43