



A000618357

OFFICE OF THE COUNTY RECORDER
CASS COUNTY, MINNESOTA
CERTIFIED, FILED, AND/OR
RECORDED ON

12/24/2015 10:45:28 AM

AS DOC #: A000618357

PAGES: 2

REC FEES: 0.00

KATHRYN M. NORBY
CASS COUNTY RECORDER

BY MW Dep TX#: 128046

Page 1 of 2 A000618357

CERTIFICATE OF LOCATION OF GOVERNMENT CORNER

I hereby certify that this survey, plan, or report was prepared by me or under my direct supervision and that I am a duly Licensed Land Surveyor under the laws of the State of Minnesota.

Patrick A. Protti

Date: 12-22-2015 License No: 41002

Northeast Corner of Section 11, Township 139 N, Range 30 W, 5th P.M.

On 5-24-15 found a 2" square monument in rock pile, up 1^o feet.

left monument as found, lowered monument, removed monument (explain)

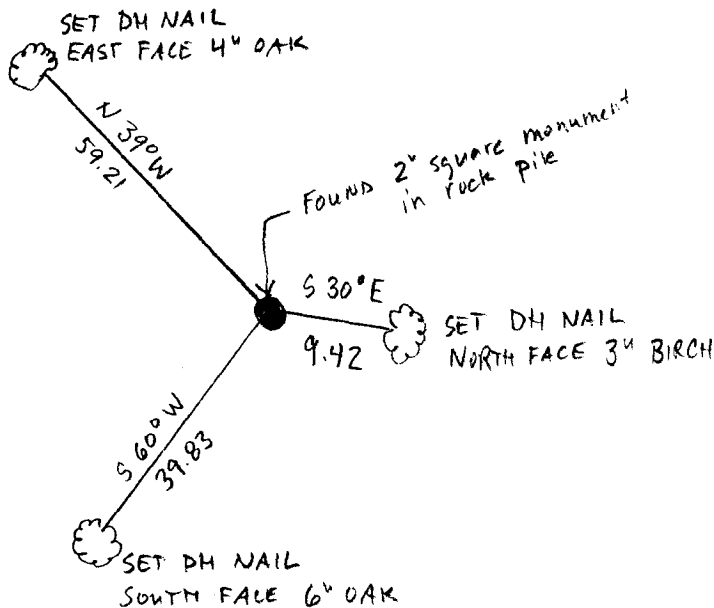
On _____ placed a _____

SKETCH OF REFERENCE TIES

Not to Scale

Corner Index:

E.0-21.0





E.0-21.0

Statement of Evidence

**Northeast corner, Section 11, Township 139 North, Range 30
West, 5th Principal Meridian, Cass County, Minnesota**

1865 – Wright and Walker, US Deputy Surveyors established this corner. A wood post was set from which the following witnesses were established:

- 12” N. Pine N 34° E 53 links
- 12” N. Pine N 46° W 31 links
- 12” N. Pine S 48° W 35 links
- 12” N. Pine S 66° E 37 links

Information on file in the MN Historical Society, St. Paul, MN. Copies on file in the Cass County Highway Department/Surveyors Office.

1925 – John Greene in Curo Book 190, Page 4, shows he found corner. Information on file in the Cass County Highway Department/Surveyors Office.

1984– Walter Curo found a rock pile and a squared and painted oak post rotted off at ground level. There were several badly burned and rotted pine stumps with no markings. Distance to South quarter corner and East quarter corner fit “real close” to government distance. Set a 2 inch square x 36 inch monument with aluminum cap for the corner and established the following witnesses, as shown on corner certificate filed as Doc. No. A000278540:

- 6” Red Oak N 46° E 41.70 feet
- 8” Red Oak S 18° W 34.12 feet
- 8” Red Oak S 62° W 20.63 feet
- 10” Red Oak N 45° W 29.82 feet

2015 – Patrick Trottier, PLS 41002, found the 2” square monument and stumps at the SW bearing trees from Curo. Area had been logged and the Curo NE and NW bearing trees were gone. Accepted monument as corner and established witnesses as shown on the face of this survey.

County Coordinates (Cass County North)

Northing 127264.56
Easting 447105.52