



A000618356

OFFICE OF THE COUNTY RECORDER
CASS COUNTY, MINNESOTA
CERTIFIED, FILED, AND/OR
RECORDED ON

12/24/2015 10:45:27 AM

AS DOC #: A000618356

PAGES: 2

REC FEES: 0.00

KATHRYN M. NORBY
CASS COUNTY RECORDER

BY MW Dep TX#: 128046

Page 1 of 2 A000618356

CERTIFICATE OF LOCATION OF GOVERNMENT CORNER

I hereby certify that this survey, plan, or report was prepared by me or under my direct supervision and that I am a duly Licensed Land Surveyor under the laws of the State of Minnesota.

Patrick A. Trotter

Patrick A. Trotter

Date: 12-22-2015 License No: 41002
PLS# 41002

North Quarter Corner of Section 11, Township 139 N, Range 30 W, 5th P.M.

On 5-21-15 found a Cass County cast iron monument, flush in centerline of power line

left monument as found, lowered monument, removed monument (explain)

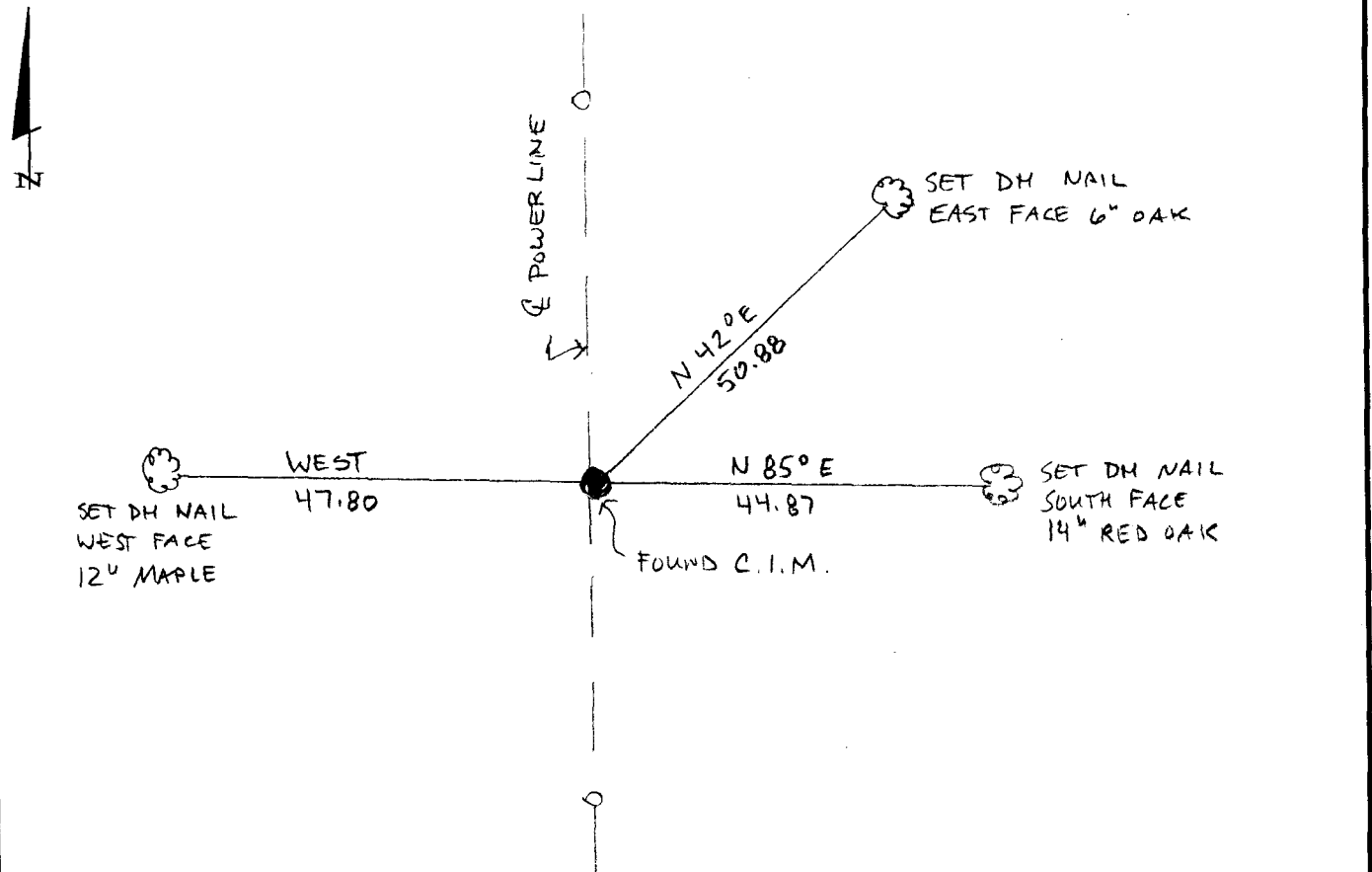
On _____ placed a _____

SKETCH OF REFERENCE TIES

Corner Index:

Not to Scale

E.0-19.0



Statement of evidence for this corner position is on the back of this page



E.0-19.0

Statement of Evidence

**North quarter corner, Section 11, Township 139 North, Range 30
West, 5th Principal Meridian, Cass County, Minnesota**

1865 – Wright and Walker, US Deputy Surveyors established this corner. A wood post was set from which the following witnesses were established:

- 24” N. Pine S 21 ½° W 4 links
- 24” N. Pine N 71° W 7 links

Information on file in the MN Historical Society, St. Paul, MN. Copies on file in the Cass County Highway Department/Surveyors Office.

1925 – John M. Greene set a 2”x5’ capped galvanized pipe for the South Quarter corner of Section 2 from the original 1865 bearing trees. Information on file in the Cass County Highway Department/Surveyors Office.

1951– Harold Curo found the capped galvanized iron pipe and the stumps of the 1865 bearing trees. Information on file in the Cass County Highway Department/Surveyors Office.

1971 – Plat of “Bresson’s Four Point Lodge” shows found monument.

1983 – Cass County personnel found the 2” pipe bent, partially out of ground, with spike at its base. Established the following witness corner:

- 11” Red Oak EAST 45.0 feet

1984– Walter Curo found the 2”x5’ monument bent and lying flat on the ground in the power line. The remains of both 1865 bearing trees were still in place but damaged by a power line brushing crew. Set a cast iron monument flush with the ground and established the following witnesses, as shown on corner certificate filed as Doc. No. A000278539:

- 14” Jack Pine N 30° E 88.94 feet
- 14” Red Oak East 44.87 feet
- 10” Red Oak S 24° W 57.72 feet

2015 – Patrick Trottier, PLS 41002, found the cast iron monument and the 14” Red Oak bearing tree (at bearing N 85° E). Accepted monument as corner and established witnesses as shown on the face of this survey.

County Coordinates (Cass County North)

Northing 127286.85
Easting 444460.63