



A000618354

OFFICE OF THE COUNTY RECORDER
CASS COUNTY, MINNESOTA
CERTIFIED, FILED, AND/OR
RECORDED ON

12/24/2015 10:45:25 AM

AS DOC #: A000618354

PAGES: 2

REC FEES: 0.00

KATHRYN M. NORBY
CASS COUNTY RECORDER

BY MW Dep TX#: 128046

Page 1 of 2
A000618354

CERTIFICATE OF LOCATION OF GOVERNMENT CORNER

I hereby certify that this survey, plan, or report was prepared by me or under my direct supervision and that I am a duly Licensed Land Surveyor under the laws of the State of Minnesota.

Patrick A. Trottier

Date: 12-22-2015 License No: 41002
PLS# 41002

Northeast Corner of Section 24, Township 134 N, Range 32 W, 5th P.M.

On 11-24-2015 found a 1/2" iron pipe with plastic cap stamped "RLS 17253",
flush with ground, at fence corner

left monument as found, lowered monument, removed monument (explain)

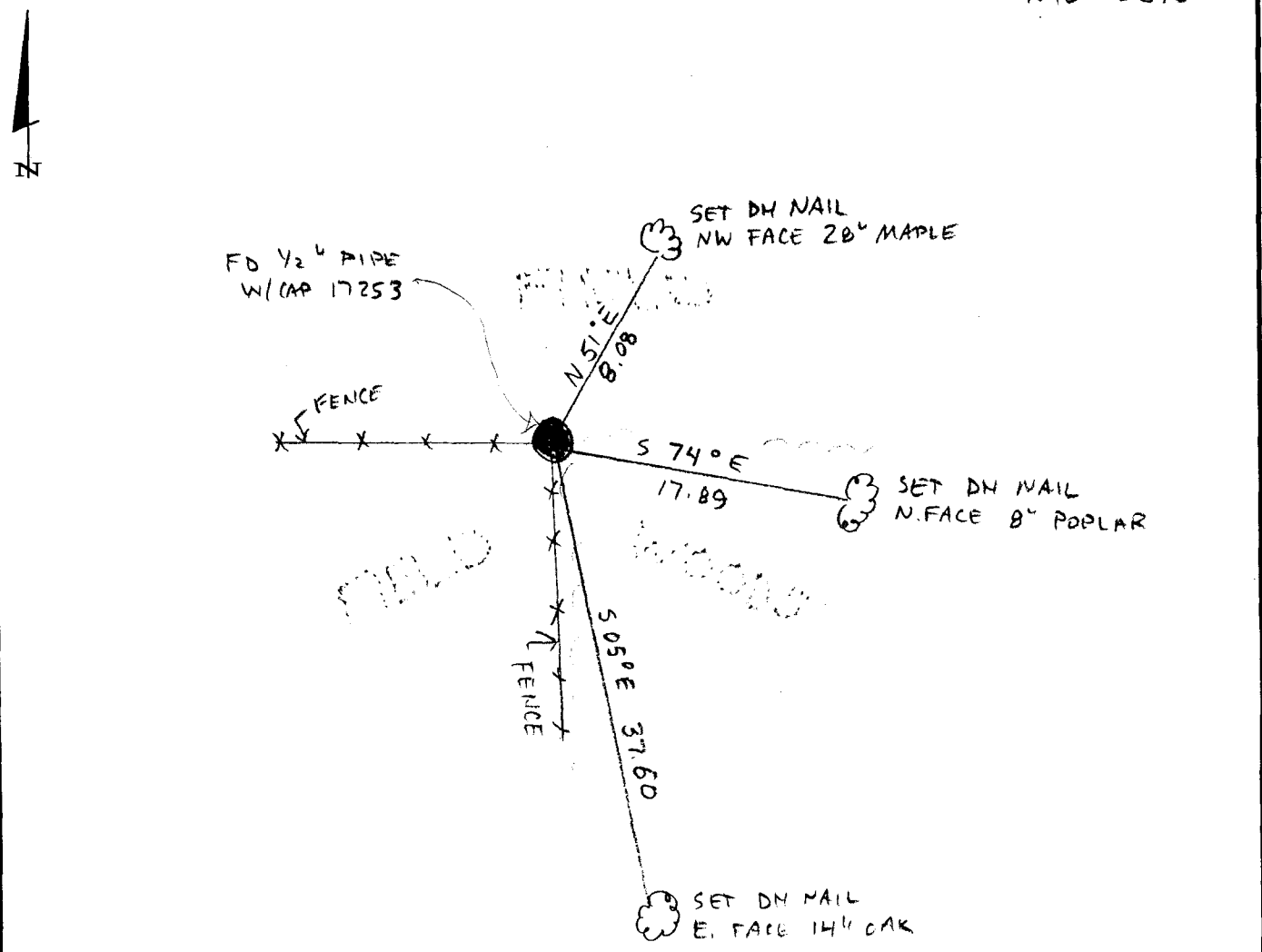
On _____ placed a _____

SKETCH OF REFERENCE TIES

Not to Scale

Corner Index:

N.0-25.0



Statement of evidence for this corner position is on the back of this page



N.0-25.0

Statement of Evidence

**Northeast corner, Section 24, Township 134 North, Range 32
West, 5th Principal Meridian, Cass County, Minnesota**

1858 – T.B. Walker, US Deputy Surveyor established this corner. A wood post was set from which the following witnesses were established:

- 10" Aspen N 77° E 27 links
- 6" Aspen N 50 1/4° W 75 links
- 8" Aspen S 86 1/4° E 27 links
- 9" Aspen S 13° W 32 links

Information on file in the MN Historical Society, St. Paul, MN. Copies on file in the Cass County Highway Department/Surveyors Office.

2003 – Certificate of Survey signed by James Kramer, PLS No. 23668, denotes found monument. Information on file in the Cass County Highway Department/Surveyors Office.

2006 – Certificate of Survey signed by Ronald L. Carnell, Sr., PLS No. 43415, denotes computed position at fence corner. Information on file in the Cass County Highway Department/Surveyors Office.

2015 – Patrick Trottier, PLS 41002, found a ½ iron with plastic cap stamped “RLS 17253” at fence corner. 5 foot diameter wire fencing at height of 4 feet had been filled with field rock over said iron. Measurements to other corners shown on 2003 Kramer survey were in conformance. Accepted monument as corner and established witnesses as shown on the face of this survey.

County Coordinates (Cass County North)

Northing 193584.88
Easting 452834.13