



A000618353

OFFICE OF THE COUNTY RECORDER
CASS COUNTY, MINNESOTA
CERTIFIED, FILED, AND/OR
RECORDED ON

12/24/2015 10:45:24 AM

AS DOC #: A000618353

PAGES: 2

REC FEES: 0.00

KATHRYN M. NORBY
CASS COUNTY RECORDER

BY MW Dep TX#: 128046

Page 1 of 2 A000618353

CERTIFICATE OF LOCATION OF GOVERNMENT CORNER

I hereby certify that this survey, plan, or report was prepared by me or under my direct supervision and that I am a duly Licensed Land Surveyor under the laws of the State of Minnesota.

Patrick A. Trottier

Date: 12-23-2015 License No: 41002

PLS# 41002

East Quarter Corner of Section 13, Township 134 N, Range 32 W, 5th P.M.

On _____ found a _____

left monument as found, lowered monument, removed monument (explain)

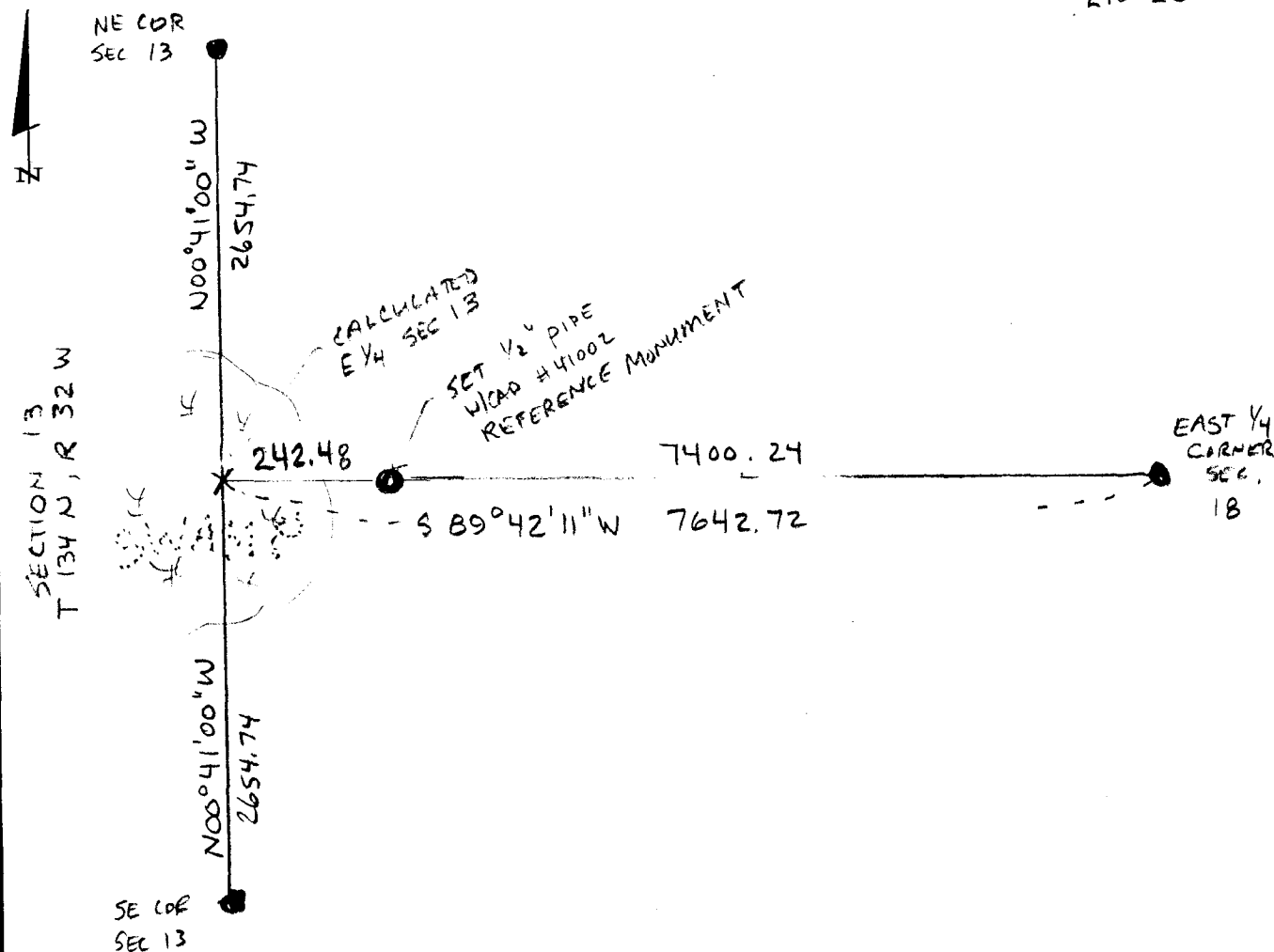
On 12-15-2015 placed a 1/2" x 18" iron pipe with plastic cap stamped "RLS 41002", as a reference monument for quarter corner.

SKETCH OF REFERENCE TIES

Not to Scale

Corner Index:

L.O-25.0



Statement of evidence for this corner position is on the back of this page



L.0-25.0

Statement of Evidence**East Quarter corner, Section 13, Township 134 North, Range 32
West, 5th Principal Meridian, Cass County, Minnesota**

1858 – E.D. Atwater, US Deputy Surveyor established this corner. A witness corner post was set 2.55 chains south of true corner. From said witness corner the following witnesses were established:

8" Pine N 81 1/4° E 175 links

5" Tamarack S 24 1/4° W 64 links

Information on file in the MN Historical Society, St. Paul, MN. Copies on file in the Cass County Highway Department/Surveyors Office.

2015 – Patrick Trottier, PLS 41002, found no evidence of corner or witness corner. Considered corner lost and established position by single proportion method between found and accepted NE and SE corners of said Section 13.

SET REF MONs

County Coordinates (Cass County North)

Northing 196239.43

Easting 452802.47