



A000618123

OFFICE OF THE COUNTY RECORDER  
CASS COUNTY, MINNESOTA  
CERTIFIED, FILED, AND/OR  
RECORDED ON

12/17/2015 12:21:50 PM

AS DOC #: A000618123

PAGES: 2

REC FEES: 0.00

KATHRYN M. NORBY  
CASS COUNTY RECORDER

BY SR \_\_\_\_\_ Dep TX#: 127883

Twp 143 Rge 26 Index No. N.0-15.0

### CERTIFICATE OF LOCATION OF GOVERNMENT CORNER

North Quarter corner of Section 22, Township 143 N., Range 26 W., 5th P.M.

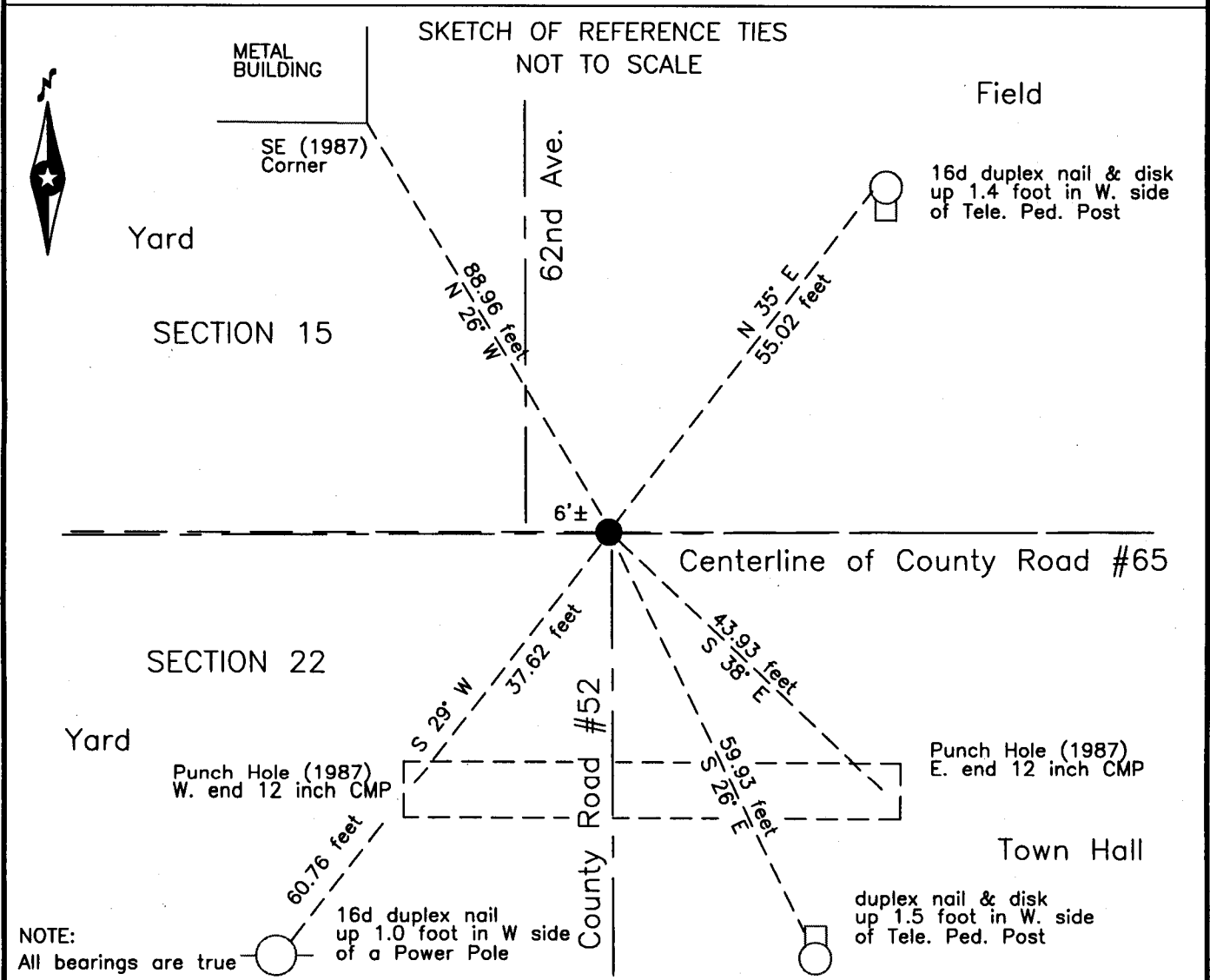
State of Minnesota, County of Cass

At the corner location shown on the sketch:

On 22 July 2015 found a 1.25 inch square steel tube with aluminum cap, by DNR  
down 0.4 foot, 0.5 foot south of centerline County Road #65.

left monument as found     lowered monument     removed monument (explain)

On 19 Oct 2015 placed same 1.25 inch square steel tube with aluminum cap,  
down 0.05 foot, onmove new centerline County Road #65.



NOTE:  
All bearings are true

Statement of evidence relative to this corner location is on the back of this page.

I hereby certify that this survey, plan or report was prepared by me or under my direct supervision and that I am a duly Licensed Land Surveyor under the laws of the State of Minnesota.

*Terry L. Freeman*  
Terry L. Freeman, Cass County Surveyor  
Date 12/16/15 MN License No. 21367

Page 1 of 2 A000618123



**Index No. N.0-15.0**

Statement of Evidence

**North Quarter corner Section 22, Township 143 North, Range 26 West, 5th Principal Meridian.**

- Circa 1900 F.V. Abbot, Major, United States Army, Corps of Engineers (COE), Lake Pokegama Reservoir Map, on file with the United States Department of Agriculture, Forest Service (USFS) offices in Cass Lake, MN, and the MHS by symbol indicates this to be a known corner.
- April 1988 J.D. Walker, LS 16098, Department of Natural Resources (DNR), file G-321, filed a Certificate of Location of Government Corner, in the Cass County Recorders Office as Document #303530.
- Dec. 1990 W.C. Osufsen, LS 17767, Under contract with the United States Department of Agriculture Forest Service(USFS), filed a Certificate of Survey, in the Cass County Recorders Office as Document #325563, this survey indicates the established corner and 1988 witnesses.
- Feb. 1998 J.J. Bunkowske, LS 24606, Certificate of Survey for Hoffman, copy on file in the Cass County Highway Department, Surveyor's Office (CCHD/SO) Indicates a monument found at the subject corner.
- Nov. 2001 M.E. Stefan, LS 12261, Certificate of Survey, copy on file in the CCHD/SO, Indicates found monument below road surface at the subject corner.
- Oct. 2003 M.E. Stefan, LS 12261, Certificate of Survey, copy on file in the CCHD/SO, Indicates found GLO monument at the subject corner.
- Oct. 2007 C.J. Hendershott, LS 45353, Certificate of Survey for Great River Energy, copy on file in the CCHD/SO, Indicates monument found at the subject corner.
- July 2015 B. Hippen, technician, records of the CCHD/SO, prior to reconstruction on CSAH #65, found the DNR 1.25 inch square steel tube with aluminum cap, down 0.4 foot, 0.5 foot south of centerline CSAH #65, on centerline County Road #52, 6 feet, more or less, east of 62nd Ave. to north and witnessed as follows:
 

Metal Building(1987)	N 26° W	88.96 feet	Punch Hole CMP(1987)	S 29° W	37.62 feet
Tele. Ped Post	N 35° E	55.02 feet	Punch Hole CMP(1987)	S 38° E	43.93 feet
Tele. Ped Post	S 26° E	59.93 feet	Power Pole	N 29° W	60.76 feet
- Oct. 2015 B. Hippen, technician, records of the CCHD/SO, after reconstruction of CSAH #65, reset DNR aluminum capped square steel tube, down 0.05 foot, on new centerline CSAH #65 from witnesses.

The monument, recovered and established references for the position are shown on the face of this document.

**Analysis of the recovered record data, field evidence and survey measurements, indicates that the monument set in 1987 by the DNR, is the accepted location of this corner.**

**County Coordinates (Cass County North)**

**Northing 243158.70**  
**Easting 564712.38**