



A000616728

OFFICE OF THE COUNTY RECORDER
CASS COUNTY, MINNESOTA
CERTIFIED, FILED, AND/OR
RECORDED ON

10/29/2015 10:43:03 AM

AS DOC #: A000616728

PAGES: 2

REC FEES: 0.00

KATHRYN M. NORBY
CASS COUNTY RECORDER

BY SR Dep TX#: 126773

Page 1 of 2 A000616728

Twp 143 Rge 25 Index No. G.0-17.0

CERTIFICATE OF LOCATION OF GOVERNMENT CORNER

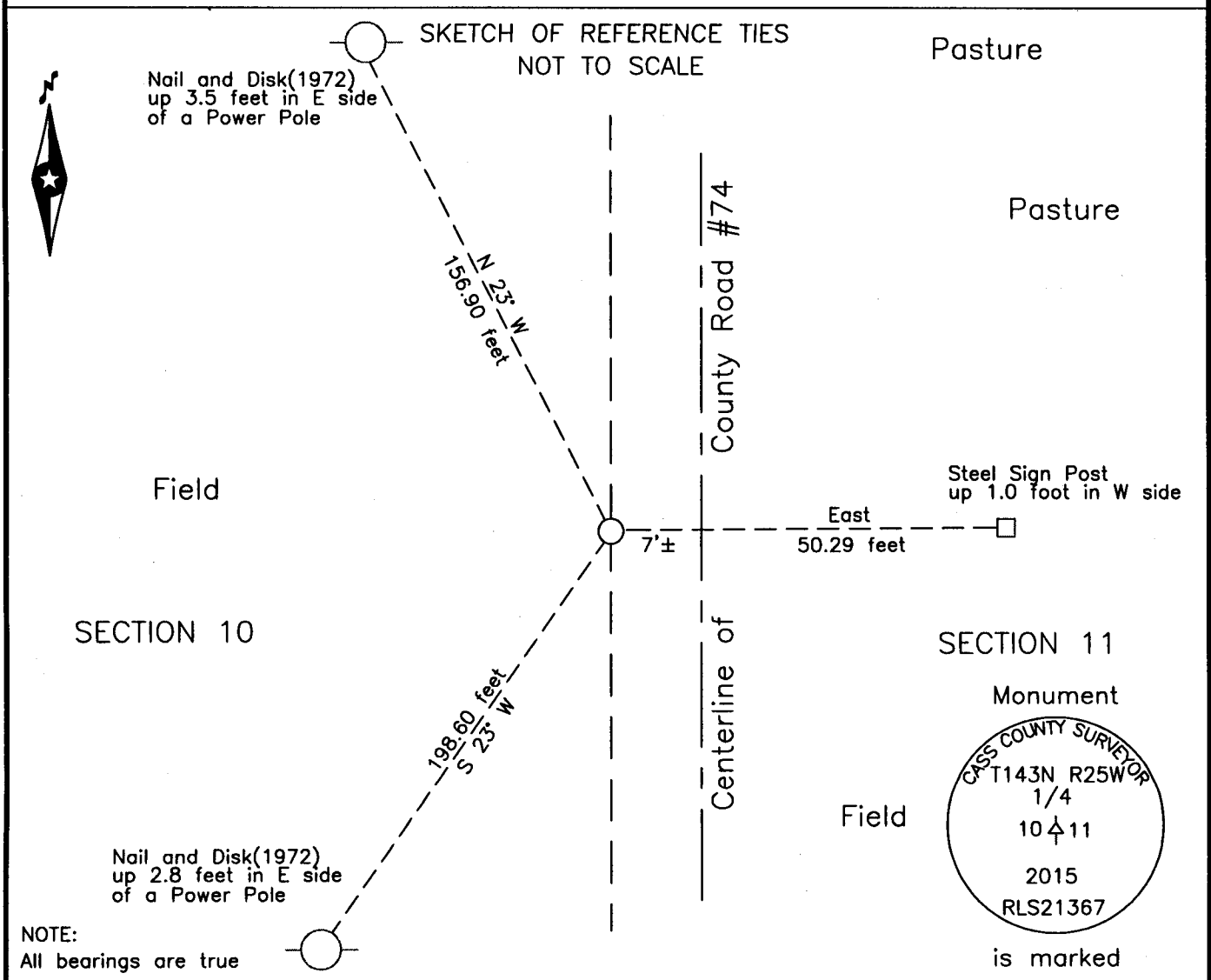
East Quarter corner of Section 10, Township 143 N., Range 25 W., 5th P.M.
State of Minnesota, County of Cass

At the corner location shown on the sketch:

On _____ found _____

left monument as found lowered monument removed monument (explain)

On 14 Oct 2015 placed an 1 inch by 30 inch aluminum tube with aluminum cap,
down 0.05 foot, 7 foot± west of centerline County Road #74.



Statement of evidence relative to this corner location is on the back of this page.

I hereby certify that this survey, plan or report was prepared by me or under my direct supervision and that I am a duly Licensed Land Surveyor under the laws of the State of Minnesota.

Terry L. Freeman
Terry L. Freeman, Cass County Surveyor
Date 10/28/15 MN License No. 21367

Statement of Evidence**East Quarter corner of Section 10, Township 143 North, Range 25 West, 5th Principal Meridian.**

- July 1872 E.W. Griffin, General Land Office (GLO) Deputy Surveyor, in the notes of the subdivision Township 143 North, Range 25 West, set a post for the original corner and referenced it as follows:
 6" Spruce N 84° W 12 links (7.92 feet) 7" Birch N 75° E 15 links (9.90 feet)
 The above record is on file with the Minnesota Historical Society in St. Paul, Minnesota, copies are filed with the Cass County Highway Department, Surveyor's Office (CCHD/SO).
- July 1908 J. Flynn, County Surveyor, road survey in Survey Record No. 416, Book C, page 184, on file in the CCHD/SO, list the GLO witnesses, finds the Spruce down and states "Put in ¼ post from this", lists new witnesses as follows:
 30" W. Pine stump S 84° E 26.5 feet 4" Aspen N 76° W 47.5 feet
- Sept. 1913 J.W. Curo, LS 1428, Survey Record No. 239, Book B, page 9, 26-27, on file in the CCHD/SO, notes the Flynn information and states "Mr. Kersting and others carefully took up Mr. Flynn's stake and put in its place an iron pipe, 5 feet long, driven its full length in the ground." He lists the Flynn witnesses as follows:
 30" W. Pine stump S 84° E 26.40 feet 4" Aspen N 77°40' W 48.47 feet
 Further states "As the iron pipe is driven in the exact spot established by Mr. Flynn for the true ¼ corner to Secs. 10 & 11-T.143-25, I accept it as the true ¼ corner and take new bearings as follows:"
 4" Poplar N 69°22' W 48.47 feet 10" Cedar Fence Corner S 87°31' W 36.85 feet
 6" Balm Gilead N 27°11' W 75.30 feet
- Oct. 1914 F.A. Donner, Township Road survey in Survey Record No. 485, Book C, pages 549 and Curo Book 94, page 27 on file in the CCHD/SO, states "1/4 corner bet. Secs. 10-11 established by Curo in 1913."
- Oct. 1965 J. Ekstrom, United States Department of Agriculture, Forest Service (USFS), Field Book 2, page 1, on file in the USFS Cass Lake Office, found Iron pipe, 1 foot under road surface. He set a 6 inch by 2 foot concrete cylinder with bronze cap, stamped RLS 6807, down 0.8 foot in road, no trees near and witnessed as follows:
 4" Cedar Post N 88° E 23.7 feet 15" Culvert North 233.2 feet
- Aug. 1968 W.H. Okerman, LS 6807, USFS, Affidavit as to Location of Government Corner was filed in the Cass County Recorders Office and later filed as Document Number A000590099, on the 1965 information.
- March 1966 D. Cole, LS 1286, Cass County Engineer, CSAH #65, State Project No. 11-665-02, on file in the CCHD, notes indicate a 1 ½ inch I.P. in place, 2646 feet north of the southeast corner of Section 10.
- March 1966 R.F. Schneider, LS 5740, Certificate of Survey, copy on file in the CCHD/SO, indicates the corner and notes it wrong should be 5 feet west.
- Feb. 1972 J.R. Worcester, CCHD, project S.A.P. 11-674-01, on file at the CCHD, notes state found brass cap monument Stamped RLS 6807, at Station 26+47.5, 0.25 foot, west of centerline P.I. of County Road #74 and witnessed as follows:
 P. Pole NW 156.9 feet 2" Hub W 80.0 feet
 P. Pole SW 198.6 feet
- April 1984 USFS and CCHD/SO, records of the CCHD/SO, found a PK nail set from the 1972 witnesses and added a witness as follows:
 Wood Fence Post East 67.88 feet
- Feb. 2009 T.L. Freeman, LS 21367, Certificate of Survey, 092002, copy on file in the CCHD/SO, indicates a found PK Nail at the subject corner.
- July 2015 B. Hippen, technician, records of the CCHD/SO, prior to reconstruction on County Road #74, recovered a 60d spike at Station 26+47, centerline Point of Intersection of County Road #74 and the 1972 corner witnesses as follows:
 Power Pole N 23° W 156.90 feet Power Pole S 23° W 198.60 feet
- Oct. 2015 B. Hippen, technician, records of the CCHD/SO, after reconstruction of County Road #74, set an aluminum Cass County monument at the intersection of the recovered 1972 witnesses, down 0.05 foot, 7 feet, more or less, West of new centerline of County Road #74 and added witness as follows:
 Steel Sign Post East 50.29 feet

The monument, recovered and established references for the position are shown on the face of this document.

Analysis of the recovered record data, field evidence and survey measurements, indicates that the monument set by the CCHD/SO in 2015 is the correct perpetuation of this corner.

County Coordinates (Cass County North)

Northing 250373.52

Easting 598891.49