

CERTIFICATE OF LOCATION OF GOVERNMENT CORNER

E 1/4 Corner of Section 32, Township 134N, Range 29W, 5th p.m., State of Minnesota, County of Cass

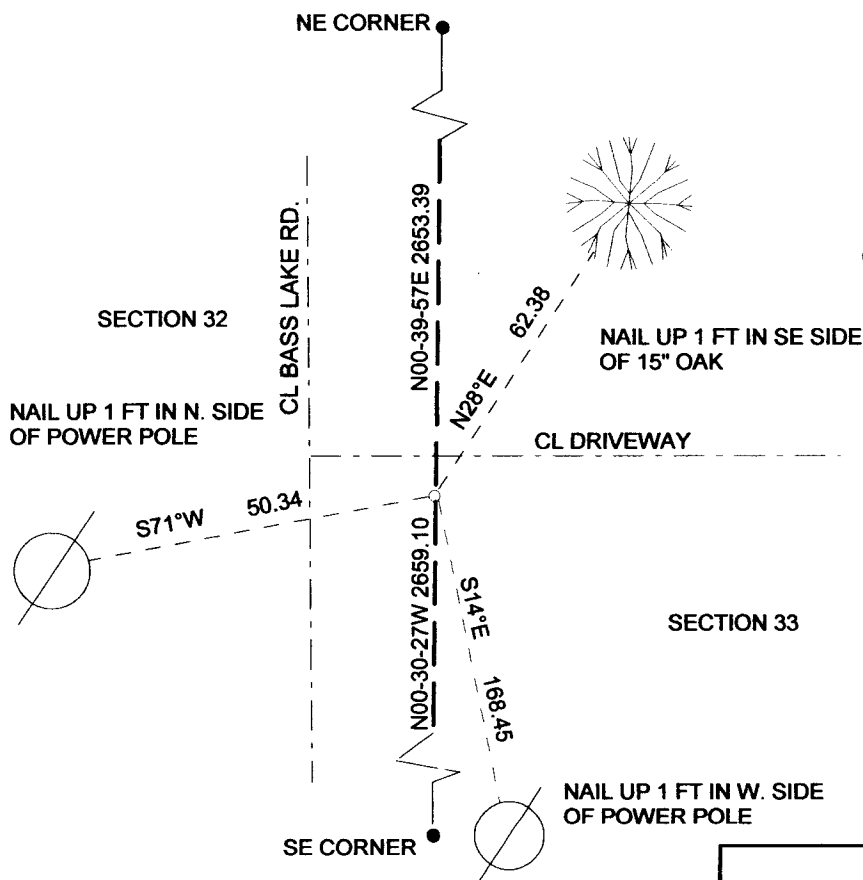
At the corner location shown on the sketch:

On MAY 26, 2015 set a 3/8" RE-BAR WITH RLS #17774
Date

left monument as found lowered monument removed monument (explain)

On _____ placed a _____
Date

SKETCH OF REFERENCE TIES



Tie Distances are measured to the spikes.

Cass County Coordinate System (South Zone)
N=180257.95 E=529652.48

○ Set Re-Rod with RLS cap No. 17774

● Found Pipe



NOT TO SCALE

Statement of evidence relative to this corner location is on back of page.

I hereby certify that this document and the data contained herein was prepared by me or under my direct supervision.

Marvin R. Kohout 6 Oct 2015
Marvin R. Kohout Date

License No. 17774

Land surveyor

OFFICE OF COUNTY RECORDER



A000616511

OFFICE OF THE COUNTY RECORDER
CASS COUNTY, MINNESOTA
CERTIFIED, FILED, AND/OR
RECORDED ON

10/22/2015 1:58:44 PM

AS DOC #: A000616511

PAGES: 2

REC FEES: 0.00

KATHRYN M. NORBY
CASS COUNTY RECORDER

BY SR Dep TX#: 126608

Page 1 of 2 A000616511



STATEMENT OF EVIDENCE

EAST QUARTER CORNER OF SECTION 32, TOWNSHIP 134N, RANGE 29W, 5TH P.M.

1865 DEPUTY SURVEYORS GEORGE B. WRIGHT AND THOMAS B. WALKER IN THE ORIGINAL GOVERNMENT SURVEY SET A POST AND MARKED B.T.'S

REFERENCES ARE:

15" NORWAY PINE	10" NORWAY PINE
N87E	N67W
111 LKS (73.26')	190 LKS (125.4')

RECORDS ON FILE AT THE MN HISTORICAL SOCIETY, ST. PAUL, AND COPIES FILED WITH CASS COUNTY HIGHWAY DEPARTMENT/ SURVEYOR'S OFFICE (CCHD/SO).

1998 BRUCE GRIVNA, LIC. NO. 17253, ON HIS CERTIFICATE OF SURVEY, INDICATES AN IRON MONUMENT FOUND, CCHD/SO.

2002 J KRAMER, LIC. NO. 23668, ON THE PLAT OF "KINGDOM ACRES", SHOWS THE CORNER BEING REFERENCED. PLAT BOOK "F", PAGE 69, DOCUMENT NO. 452013, CASS COUNTY RECORDER'S OFFICE.

2015 MARVIN KOHOUT LS NO. 17774 AND TRAVIS BARE, TECHNICIAN, OF KOHOUT LAND SURVEYING, SET A 3/8" RE-BAR CAPPED WITH RLS 17774 AT KRAMER'S 2002 LOCATION.